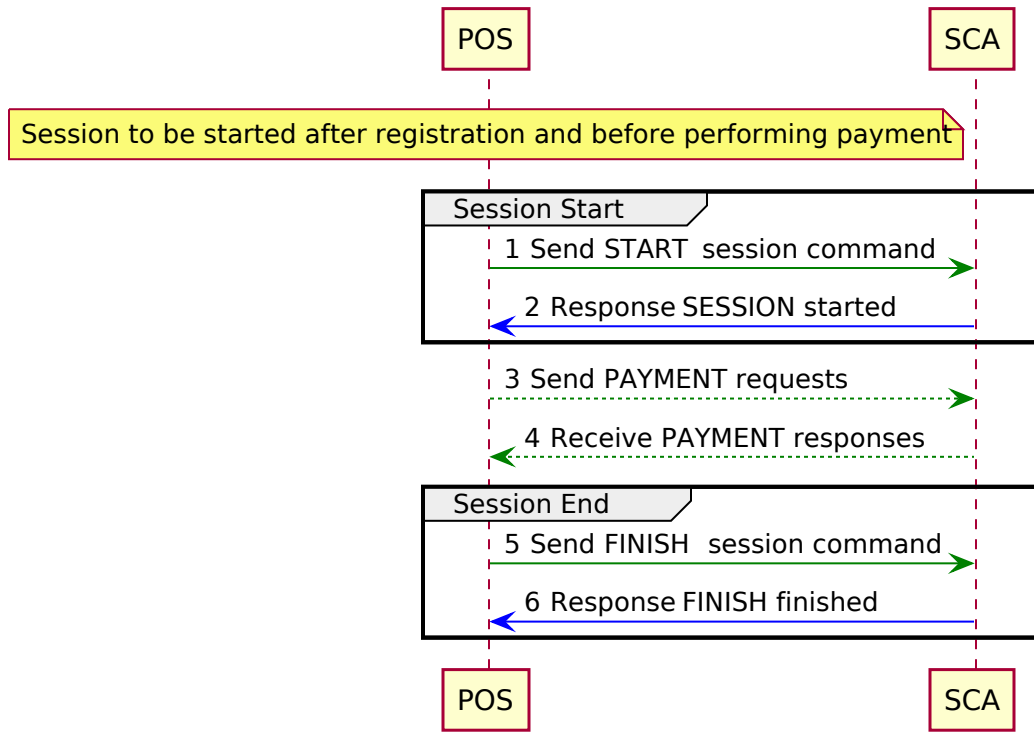


## Session Management

A session needs to be established between a POS and the SCA before performing any payment transactions.



### Rules

1. A session must be open for all payment (FUNCTION\_TYPE PAYMENT) and line item (FUNCTION\_TYPE LINE\_ITEM) transactions. Point persists an open state between POS requests using this session.
2. If a session is not open, the device will return with "No session" in the RESPONSE\_TEXT element.
3. The POS system can use a FINISH ([FINISH SESSION](#)) to emulate a POS 'cancel' or exit of the session as long as the payment transaction is not 'in-flight' to the gateway.
4. To cancel the session, the POS system should send the FINISH command on the same socket or TCP session from which the START originated. If a different TCP session or socket is used, the device will respond with the DEVICE IS BUSY (59002) response.

### Configuration Parameter

NONE

### Message Interfaces

Refer to the below Protocol sections for the command fields description and examples.

- [START SESSION](#)
- [FINISH SESSION](#)