





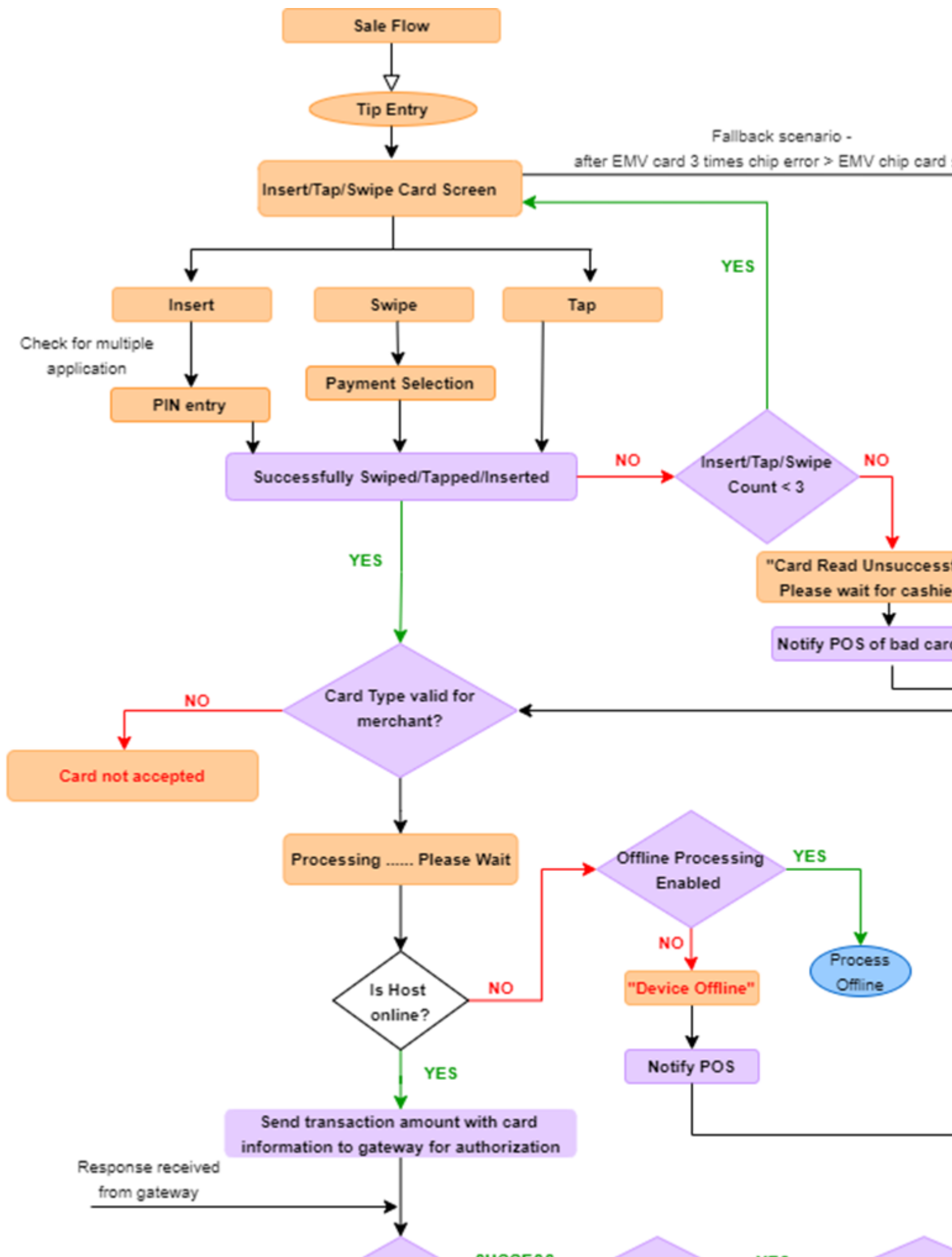
https://verifone.cloud/docs/sca-functional-specification/media_specifictn/disp_scrn_trans_flow_keypad

Updated: 23-Jun-2025

Transaction Flow and Keypad Details

The below flow diagram explains the Sale transaction flow and this is an example for Retail application type.

Orange boxes  represent prompts/screens shown on the device and Purple boxes  represent work being done by business logic of the application.






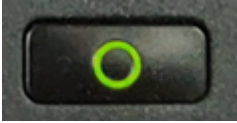
Device Series Keypad

Device Keypad

Keypad	Description
	M440 device keypad
	P400 device keypad
	e285 device keypad

Color-Coded Function Keys

Keys	Description
	The color-coded keys perform specific tasks. These keys may differ in shape and have text on them as seen in the graphics, however the function for each key remains the same.
	Red Cancel Key: Press this key to cancel the current operation.
	Yellow Clear Key: The action of this key will depend on its placement in the prompt sequence. Pressing this key will typically clear text.



Keys

Description

Green Enter Key: This key is used like the Enter key. Press this key to signify that the task is complete, or press to enable a function or perform an action based on typed data.