

B53 and Higher UI

User Reference

Date: July 04, 2022

WELCOME TO OUR STORE
SWIPE CARD

1 RECEIPT(S) PENDING

02:45 AM / Thursday, Aug 13, 2020
Reg101 CORPORATE

Description	Qty	Amount	Category	Item	Amount	Category	Item	Amount	Category	Item	Amount	Category	Item	Amount			
UNLD1 CA #01	8.830	9.81															
SELF @ 1.111 / G																	
Subtotal			\$9.81			Tax			\$0.00			TOTAL			\$9.81		
CASH			\$10.00			Amt Due			\$-0.19								

Price Check Help Susp Trans Void Line Show Fuel Error Correct

Ready

WELCOME TO OUR STORE
SWIPE CARD

Fuel Updates Pending
Fuel Updates Pending

04:35 PM / Wednesday, Aug 12, 2020
Reg101 CORPORATE

Description	Qty	Amount	Category	Item	Amount	Category	Item	Amount	Category	Item	Amount	Category	Item	Amount			
Subtotal			\$9.81			Tax			\$0.00			TOTAL			\$9.81		
CASH			\$10.00			Amt Due			\$-0.19								

Price Check Help Recall Reprint Show Fuel CSR Func



Base 53 and Higher UI User Reference

July 04, 2022

VeriFone®, Inc.
2744 N University Drive,
Coral Springs, FL 33065
Telephone: +1 (800) 837-4366
<https://www.verifone.com>

© 2022 Verifone, Inc. All rights reserved.

No part of this publication covered by the copyrights hereon may be reproduced or copied in any form or by any means - graphic, electronic, or mechanical, including photocopying, taping, or information storage and retrieval systems - without written permission of the publisher.

The content of this document is subject to change without notice. The information contained herein does not represent a commitment on the part of Verifone. All features and specifications are subject to change without notice.

Revision History

Date	Description
February 19, 2020	Initial release.
March 11, 2020	Fixed review comments.
August 19, 2020	Updated document with new features and fixed review comments.
January 15, 2021	Production Release.
September 03, 2021	Added Impact after auto upgrade
September 28, 2021	Added Appendix

CONTENTS

- 1. Base 53 and Higher Overview 1**
 - Base 53 and Higher UI Objectives. 1
 - Base Limitations 2
 - UI Features 2
 - New C18 POS Features. 2
 - C18 Hardware Specifications 3

- 2. User Interface Changes 4**
 - Auto Upgrade to Base 53 and Higher Impact on UI. 4
 - Old UI 4
 - New UI. 5
 - Button Placement After Auto Upgrade Examples 6
 - Whats’s NEW?. 7
 - Changes in Current POS UI vs New UI10
 - Audio, Brightness & Sreensaver Controls10
 - Calculator Widget13
 - Cashier Functions Menu.14
 - Daily Message Area.15
 - Device Control15
 - Expanded Menu20
 - Sales Screen21
 - Express Panel21
 - Fuel Buttons22
 - Fuel Point Detailed View24
 - Maintenance Functions Menu25
 - Idle Screen26
 - Input Overlay28
 - Keyboard Echo Area29
 - Login Overlay29
 - Message Overlay30
 - Numeric Keypad/Virtual Keypad31
 - Overlay Menu32
 - Panel Resize33
 - Receipt Preview34
 - Receipt Widget35
 - Register Info Area36
 - System Message Area37

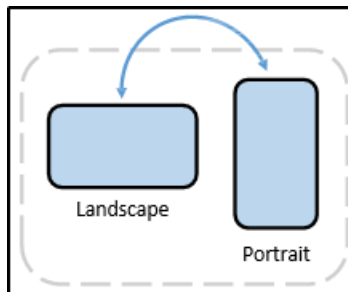
3. Configuring User Interface Elements	38
UI Elements38
Configuration Using Config Client.39
Panel Configuration39
Screen Configuration47
Register Configuration51
Configuration on the POS52
Cashier Preferences52
Screen Clean Mode53
PIN Pad Configuration.54
Version Information.55
4. Appendix	56
Screen Import Issues56

1

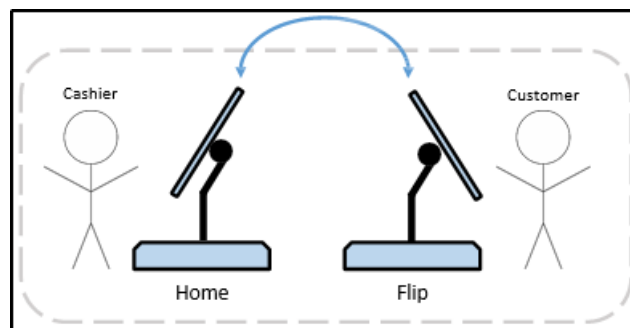
BASE 53 AND HIGHER OVERVIEW

Base 53 and Higher UI Objectives

- Re-uses existing Business Logic and work-flow
- Supports existing peripherals
- Supports same application on current POS system: Ruby2, RubyCi and Topaz 410
 - **Topaz 310 is NOT supported**
- Allows a mix of register types at a site
- Supports existing register limit (total 32)
- Supports existing install procedures and connectivity
- Supports new C18 POS that can be used for multiple applications based on screen orientation or position
 - Orientations: Landscape and Portrait



- Position: Home and Flip



Base Limitations

The minimum software version required to auto upgrade to Base 53 software is Base 51.14. If the software installed is lesser than Base 51.14 then perform two auto upgrades. In the first auto upgrade, bring software version to B51.14 and then perform another auto upgrade to B53.

UI Features

- “Flattened” design elements
- Improved Screen layout
- Improved Parked Menu
- Mobile phone style gesturing and navigation
- Introduced new C18 POS

New C18 POS Features

- HD Display
 - 18.5” (1920 x 1080, 119PPI)
 - Multi-touch gestures
- Detachable 120-key Keyboard
 - Wired Connection
 - Magnetic legs grip cash drawer or mate with bracket
- Graphical Customer Display
 - Two-line emulation mode (First-out)
 - Existing 2-line Partner model also supported
- Smart Battery
 - “Gas gauge” technology
 - Charge cycle counter
- Multi-color LED Light Ring
- No MSR

C18 Hardware Specifications

Specifications

Storage	M.2 - 4GB
CPU (Intel)	Celeron 3965U @ 2.20GHz
Core(s) per CPU	2
RAM	4 GB
Additional Hardware Components	Camera Finger Print Gyroscope Accelerometer Customer Display WiFi Support

2 USER INTERFACE CHANGES

This chapter describes the new User Interface (UI). The software can be installed on current POS System and on the new C18 POS.

How to configure buttons on the touch screen has changed. Instead of having screens with buttons, the user can now configure panels within screens, and have as many item buttons as they want on the panels.

Auto Upgrade to Base 53 and Higher Impact on UI

Configuration of POS touch screens in Base 52 and lower consisted of selecting a register, then selecting the screen, and finally configuring the Fuel Panel(s), User Panel(s), and the Parked Menu Panel(s). Screens could be duplicated within a register configuration, and registers could be copied to one another.

In Base 53 and higher, this process is reversed. First, configure Fuel Panel(s), User Panel(s), and Parked Menu panel(s). Then you assign the panel(s) to a screen(s) and finally assign the screen(s) to register(s).

Because of this change, buttons that were in one location on a screen in Base 52 and below may be in an entirely new location after an auto upgrade to Base 53 and higher.

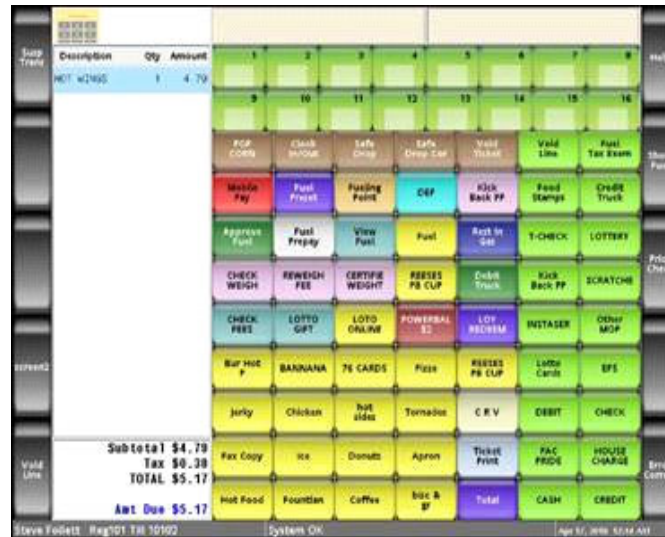


Refer to “Appendix” on page 56 for more information.

Old UI

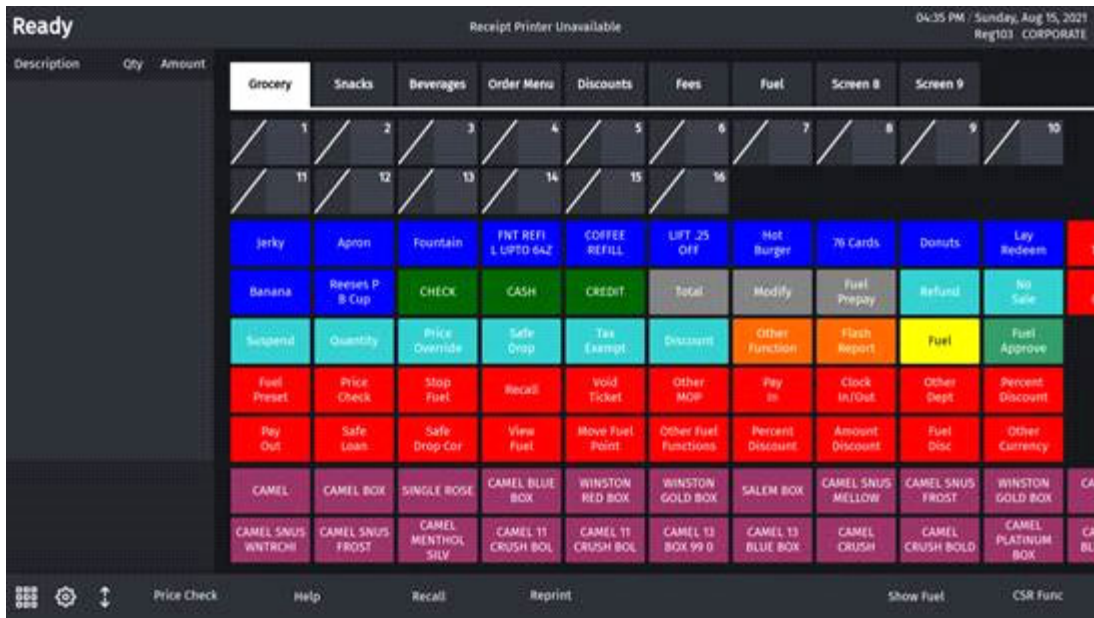
1. Supports 11 rows.
2. First two rows are reserved for fuel even if fuel is not configured. The fuel panel has 8 columns and can support split buttons.

- Item and parked menu panels have 7 columns.



New UI

- Supports 9 rows and 7 columns (9x7) to accommodate large buttons with utility panel (default). Supports 9 rows and 10 columns (9x10) without utility panel.
- All panels are treated equally and there is no special consideration for fuel panel. The fuel panel is not shown if not configured.
- If screens have more than 9x7 buttons (with Utility Panel) or 9x10 (without Utility Panel), the buttons are available in next swipe able page. The fractional button of hidden row will be shown to indicate you can swipe to see the rest of the buttons.
- For old to new UI conversion, maximum 2 rows are reserved for fuel panel, 2 for parked menu panel and rest 5 rows are reserved for item panel. The remaining rows are hidden. The panel sizes can be adjusted later with slider and rest of the screen is adjusted accordingly.
- If there are no fuel or parked menu panels then all buttons are assigned to item panels.



Button Placement After Auto Upgrade Examples

- Old screen: 16 FP buttons (2 rows), 49 item panel buttons (7 rows), 14 parked menu buttons (2 rows).
- New Screen: 14 FP buttons (2 rows) with one hidden row having two buttons, 35 item

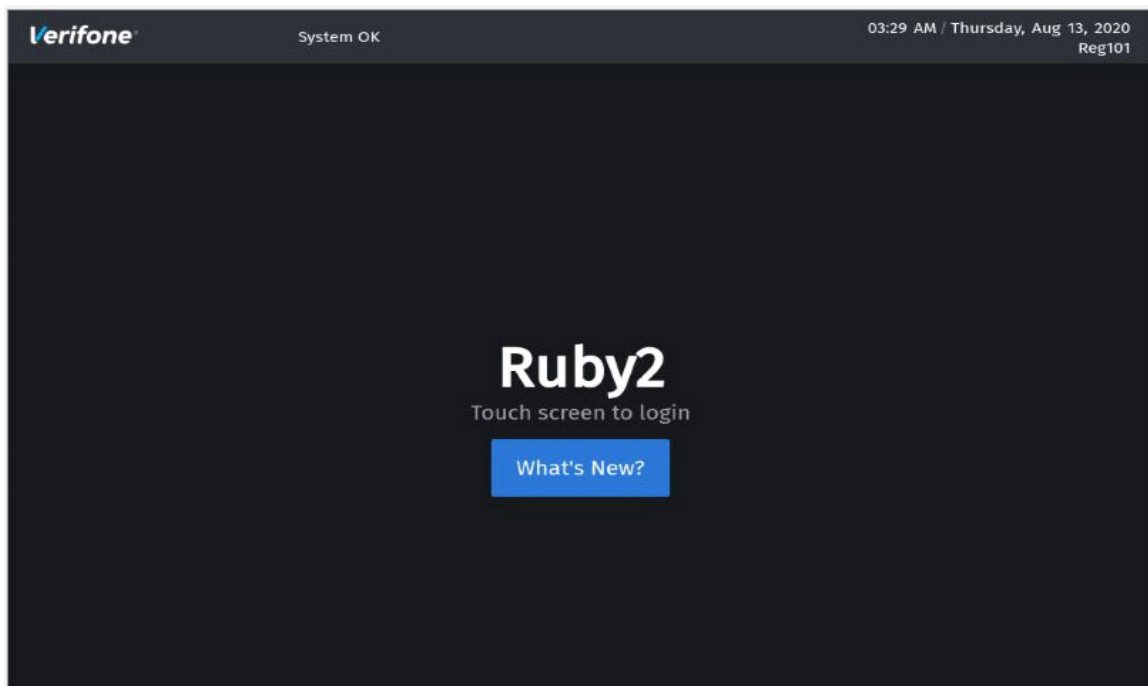
panel buttons (5 rows) with two hidden rows having remaining 14 buttons, 14 parked menu buttons (2 rows).

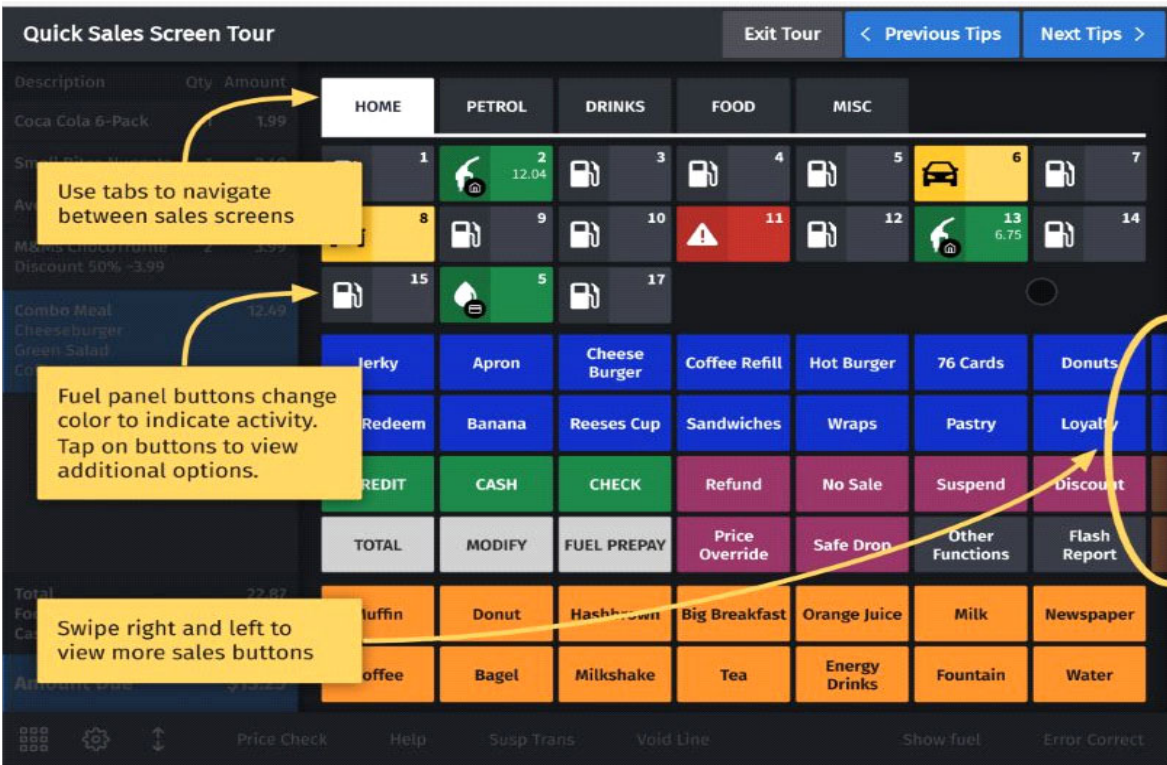
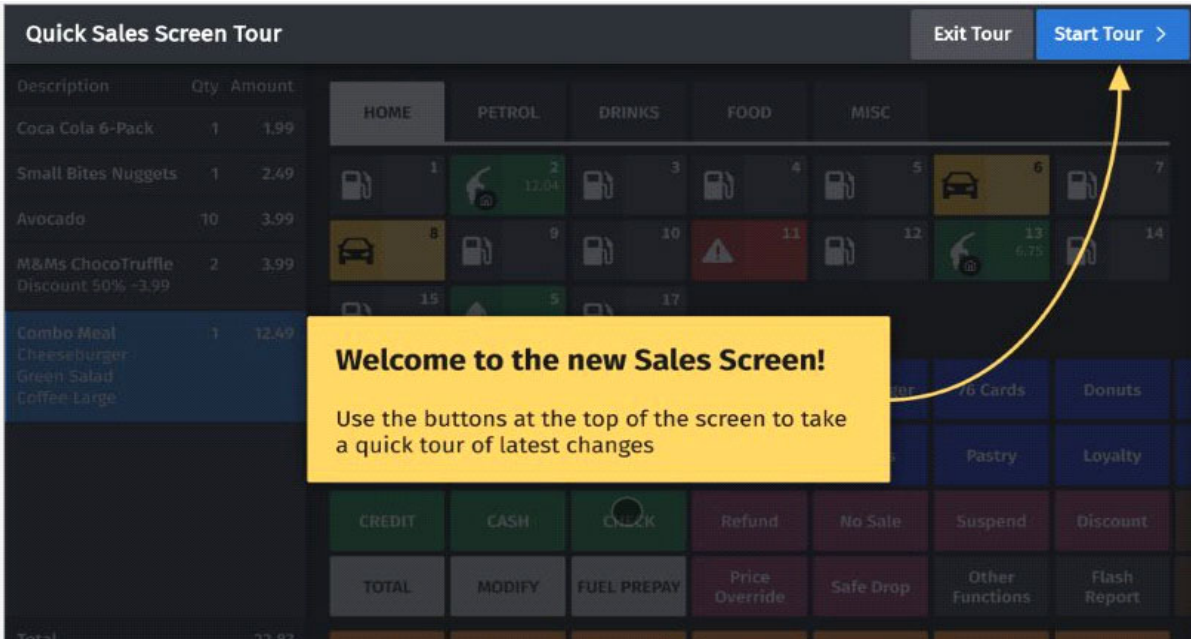
- **Old screen:** 16 FP buttons (2 rows), 63 item panel buttons (9 rows).
New Screen: 14 FP buttons (2 rows) with one hidden row having two buttons, 49 item panel buttons (7 rows) with two hidden rows having remaining 14 buttons
- **Old screen:** 16 FP inactive buttons (2 rows), 63 item panel buttons (9 rows).
New Screen: 63 item panel buttons (9 rows)

Whats's NEW?

This feature is available only on the idle screen of existing POS, such as, Ruby2, Rubi Ci and Topaz410.

Click on “What’s New?” to take a tour of the new UI.





Quick Sales Screen Tour Exit Tour < Previous Tips Next Tips >

Description	Qty	Amount
Coca Cola 6-Pack	1	1.99
Small Bites Nuggets	1	2.49
Avocado	10	3.99
M&Ms ChocoTruffle	2	3.99
Discount 50% -3.99		
Combo Meal Cheeseburger Green Salad Coffee Large	1	12.49

Scroll up and down in the receipt area to see items

Tap to open numeric keypad

Tap to open cashier preferences

Tap to adjust the height of each sales screen section

Amount Due \$13.25

Price Check Help Susp Trans Void Line Show fuel Error Correct

Quick Sales Screen Tour < Previous Tips Finish Tour

Description	Qty	Amount
Coca Cola 6-Pack	1	1.99
Small Bites Nuggets	1	2.49
Avocado	10	3.99
M&Ms ChocoTruffle	2	3.99
Discount 50% -3.99		
Combo Meal Cheeseburger Green Salad Coffee Large	1	12.49

Visit the Help section to find out more

Amount Due \$13.25

Price Check Help Susp Trans Void Line Show fuel Error Correct

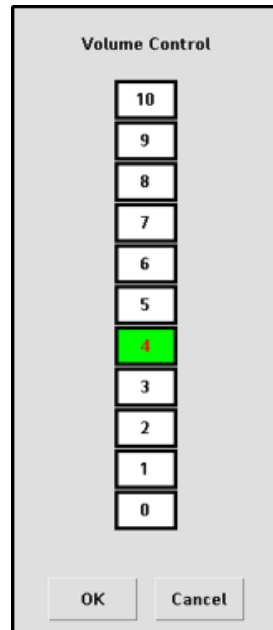
Click "Finish Tour" button to complete the tour of the new UI.

Changes in Current POS UI vs New UI

Audio, Brightness & Sreensaver Controls

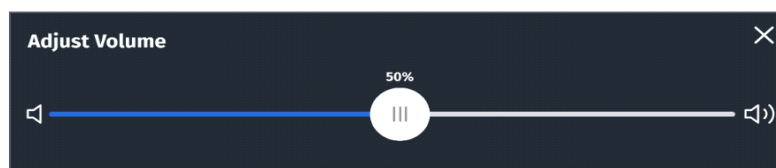
Audio

Current POS UI



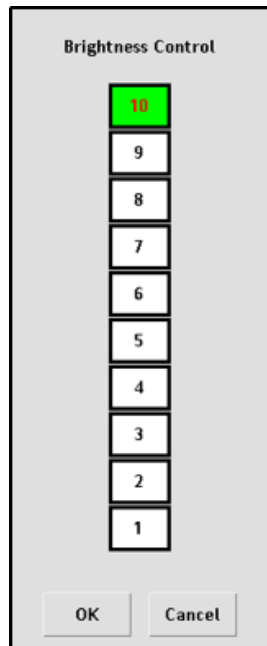
New UI

The volume is audible when slider is moved and finger is lifted on audio control, The settings are saved when widget is closed.



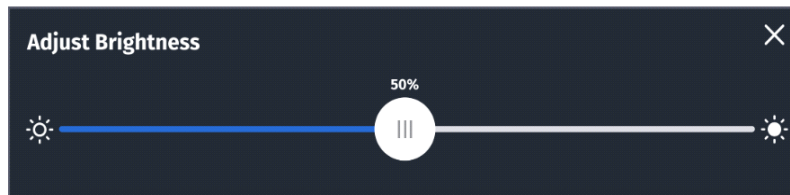
Brightness

Current POS UI



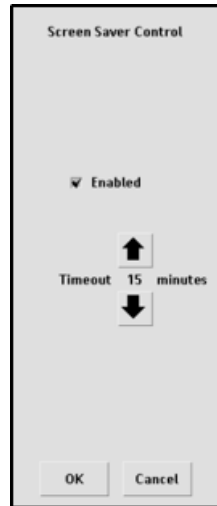
New UI

The brightness is visible when slider is moved and finger is lifted from brightness control. The settings are saved when widget is closed.

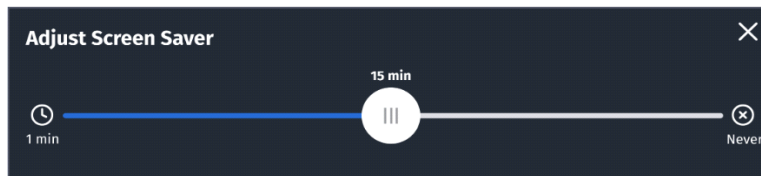


Screensaver

Current POS UI

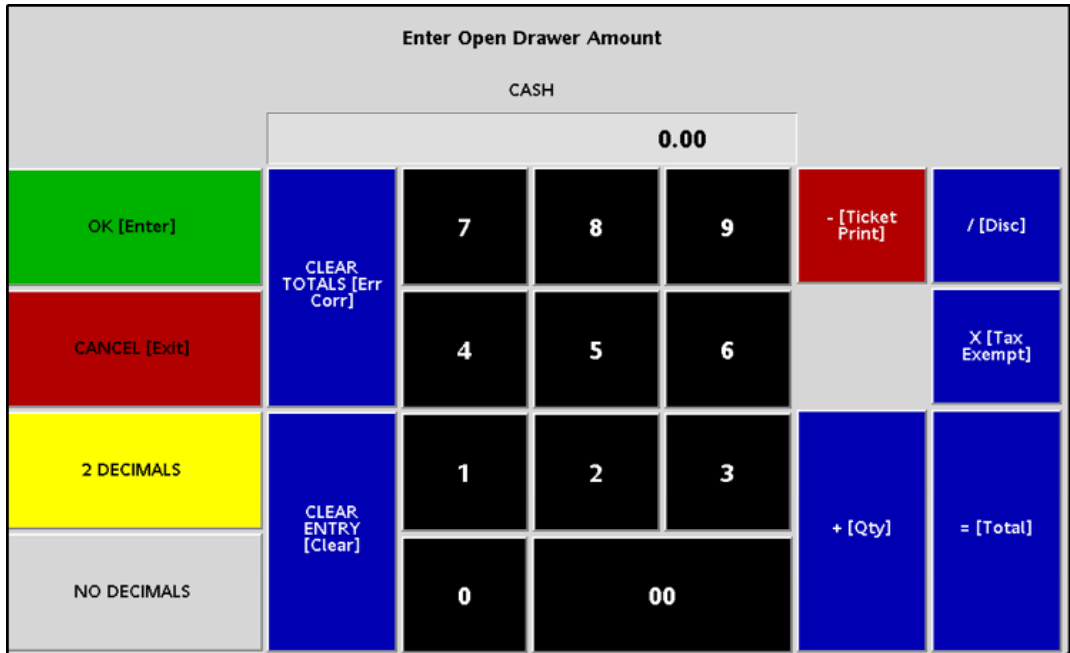


New U
The settings are saved when widget is closed. |

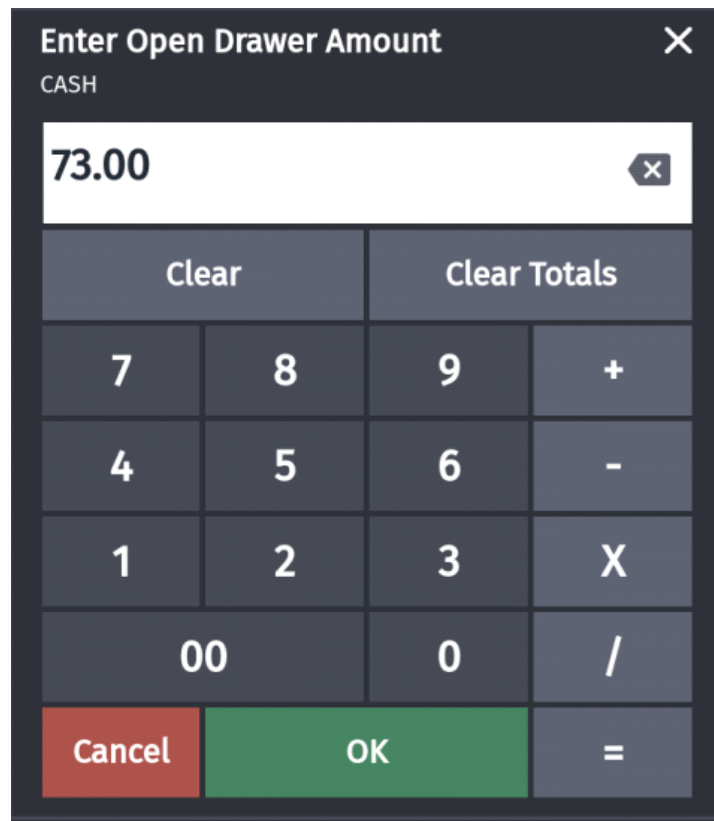


Calculator Widget

Current POS UI



New UI

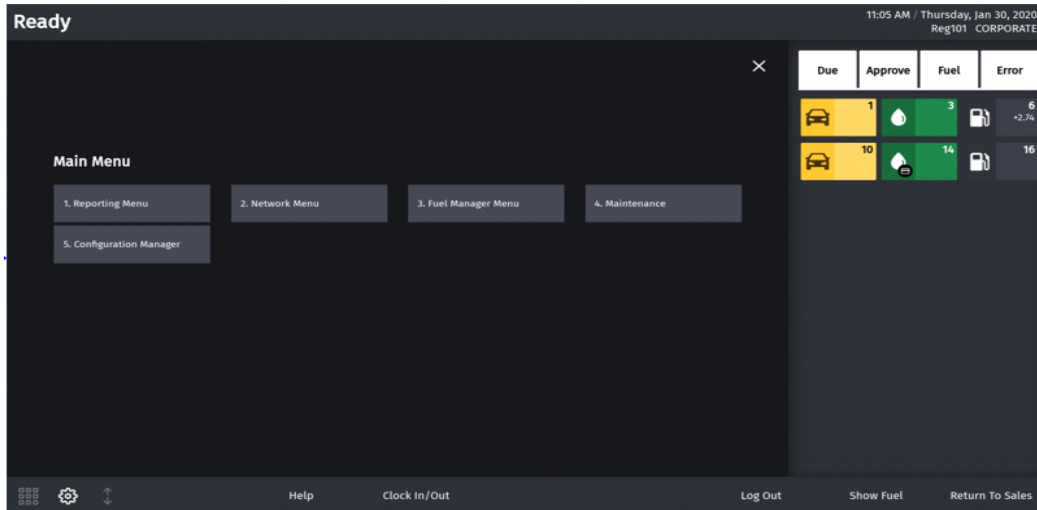


Cashier Functions Menu

Current POS UI



New UI



Daily Message Area

The daily message area is found on top of the POS screen.

Current POS UI

WELCOME TO OUR STORE	Fuel Updates Pending Fuel Updates Pending DCR Init Pending	CORPORATE Reg101 Till 10101	Aug 13, 2020 5:15 AM
----------------------	--	-----------------------------------	-------------------------

New UI

The text color of daily message copy is black/white depending on the theme selected. The PIN pad messages are not shown in blue color anymore.

Ready

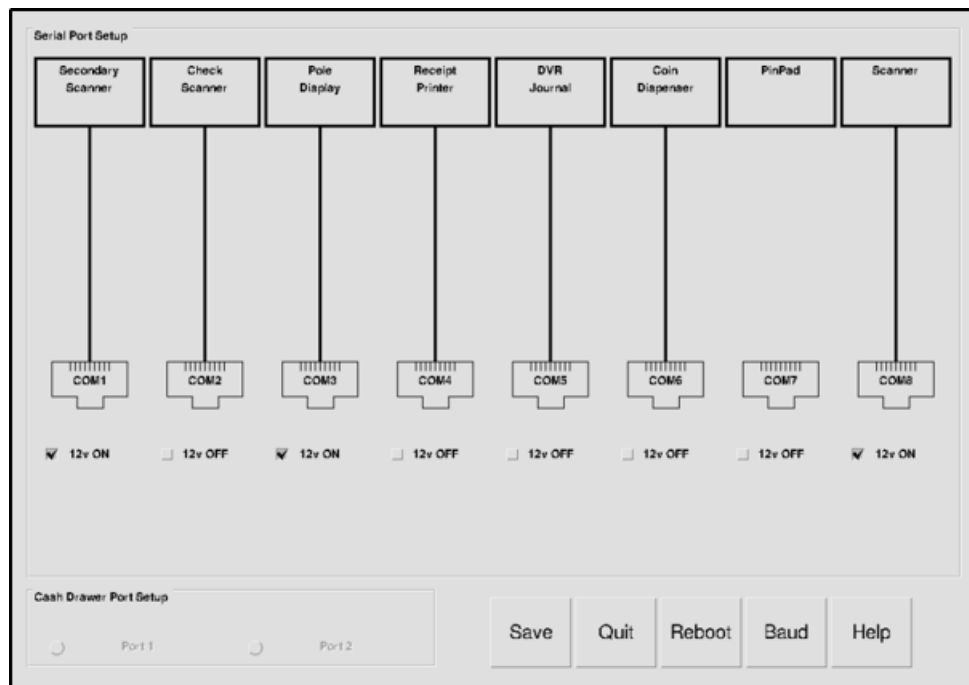
DCR Driver Init Pending

09:27 AM / Friday, Sep 18, 2020
Reg102 CORPORATE

Device Control

Access Device Control from **CSR Functions > Maintenance**.

Current POS UI

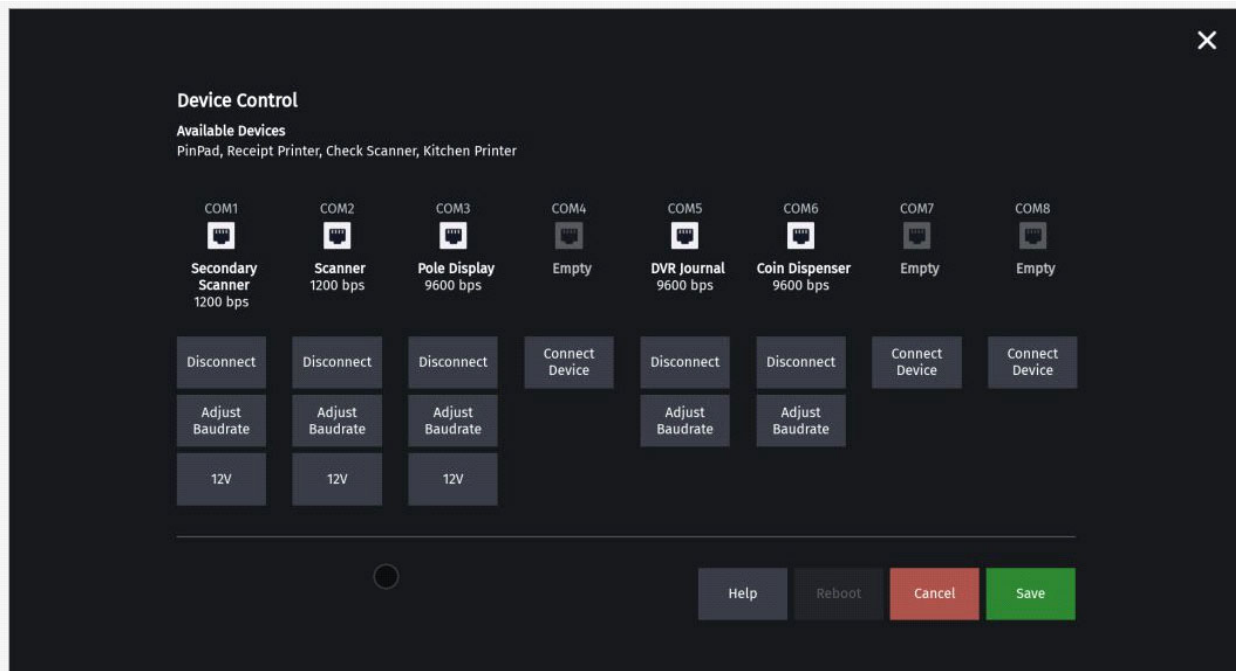


New UI

The following are the changes made to Device Control:

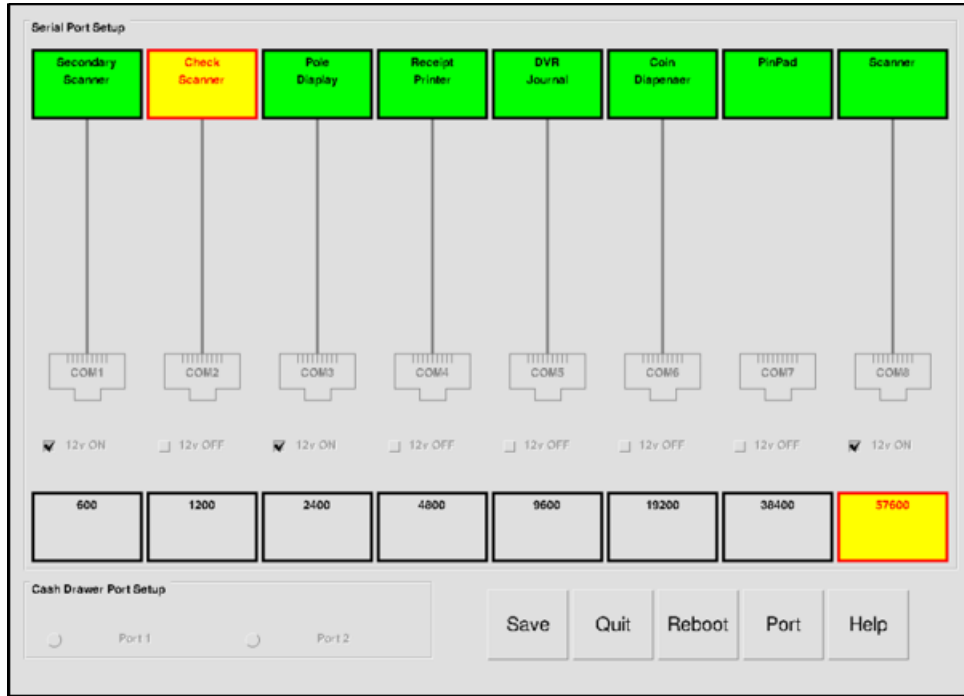
- The background is dimmed for pop-ups for baud-rate selection, help message and connecting device. The UI elements underneath the pop-up is not accessible. The serial icon for disconnected devices are grayed out.
- The 12V button is like a ON/OFF switch. If its OFF then button is grayed out.

- Only `Help` button is active when widget is accessed and all other buttons (Reboot, Cancel, Save) are grayed out. The `Help` remains active till widget is dismissed.
- Whenever there is some change, other buttons become active.
 - On clicking **Cancel**, all buttons are grayed out except **Help**.
 - On clicking **Save**, all changes are saved. All buttons are grayed out except **Help** and **Reboot**.
- When the widget is dismissed, all pending changes are saved.

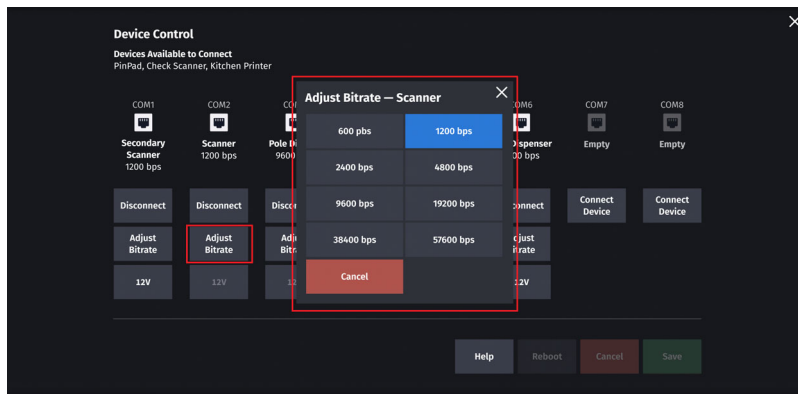


Device Control - Baud rate

Current POS UI

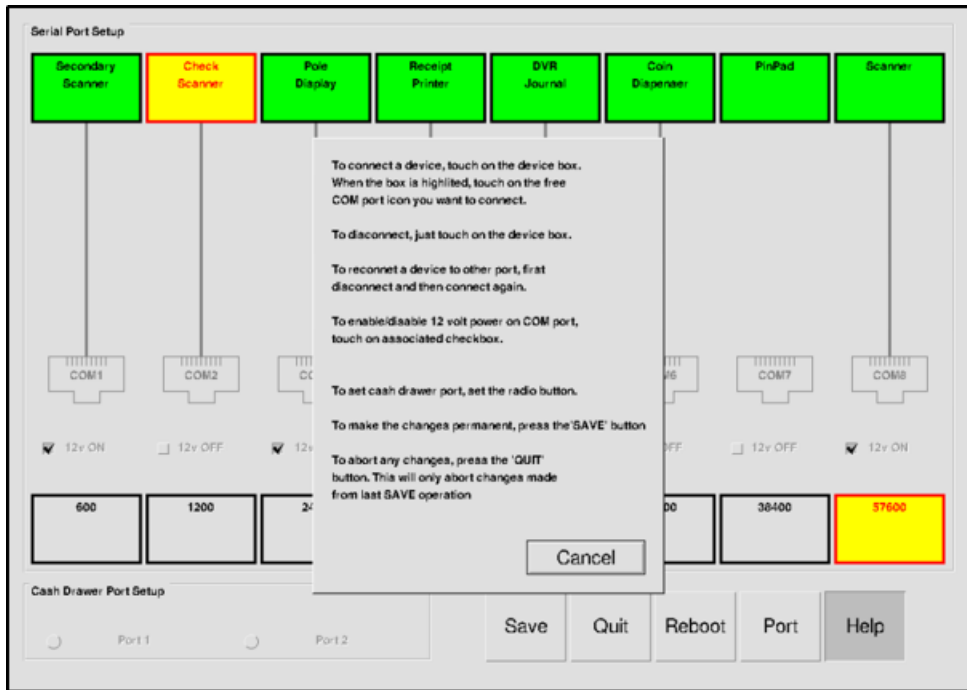


New UI

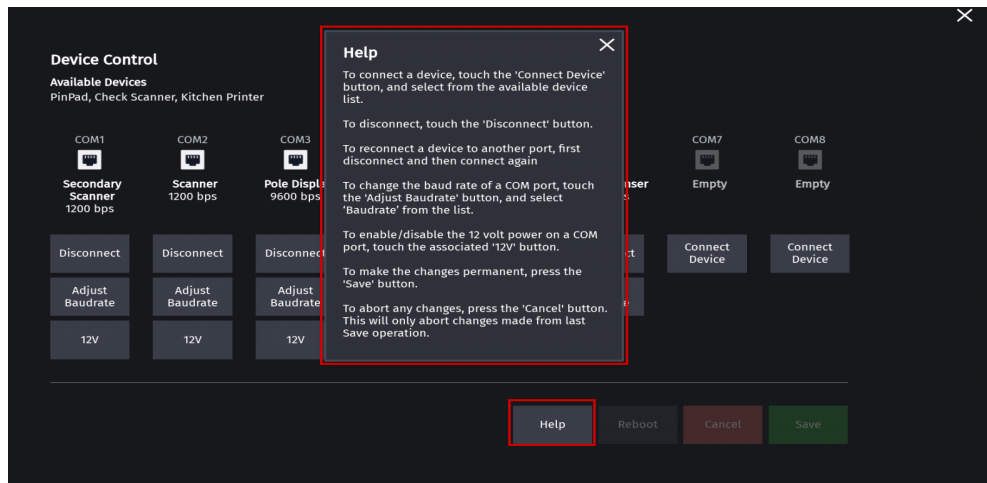


Device Control - Help

Current POS UI

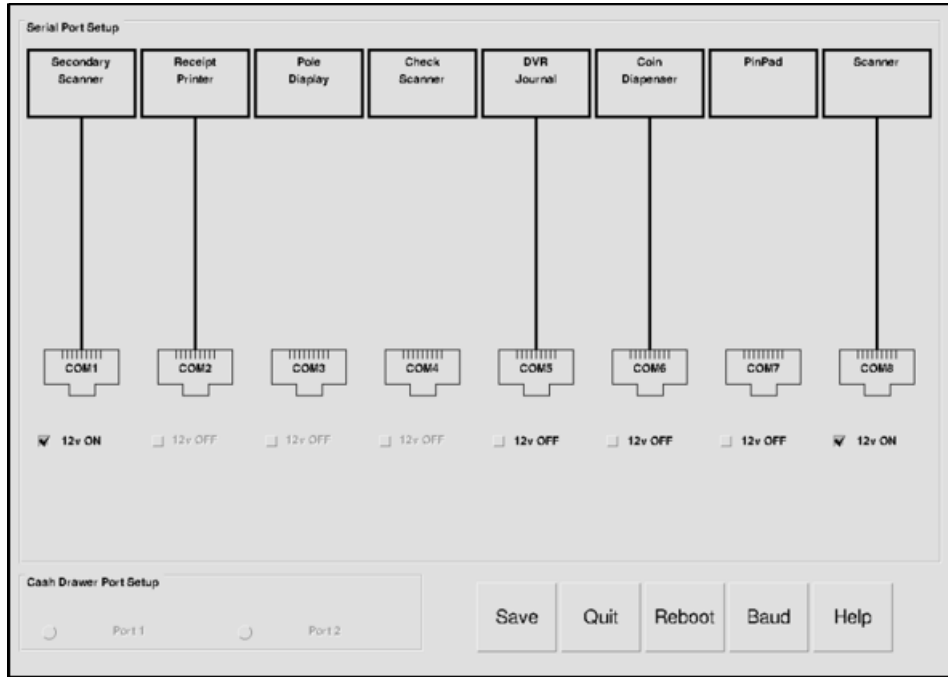


New UI

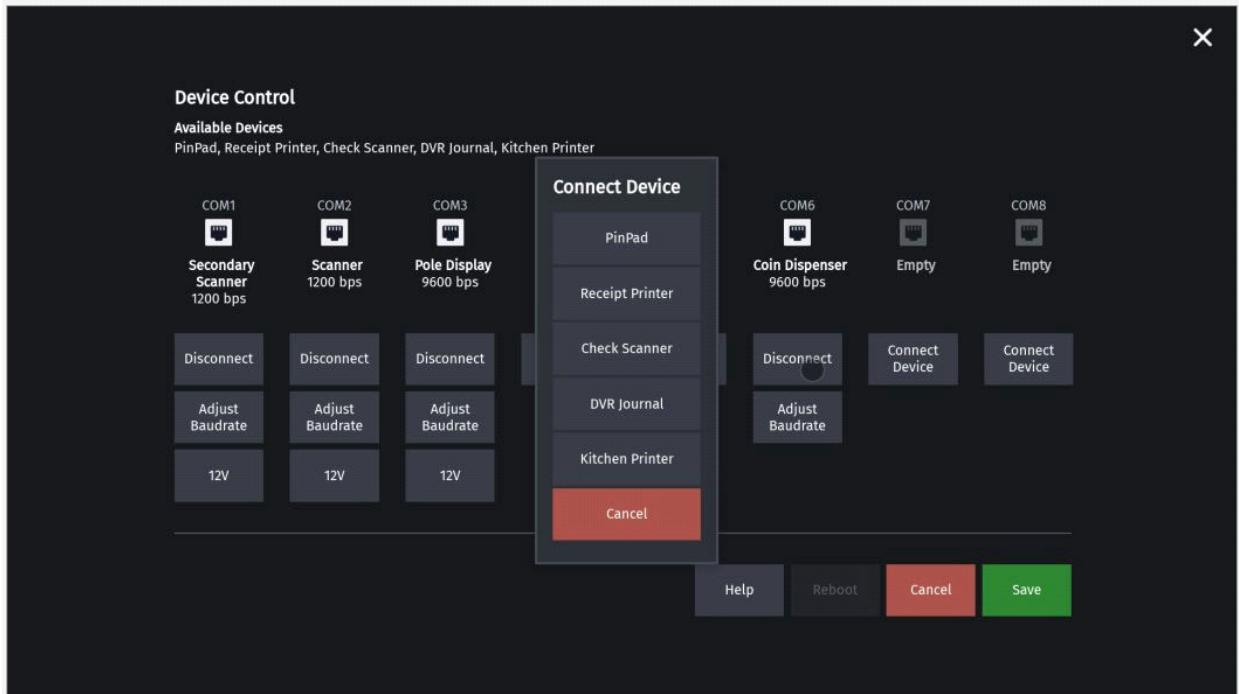


Device Control - Connect Device

Current POS UI

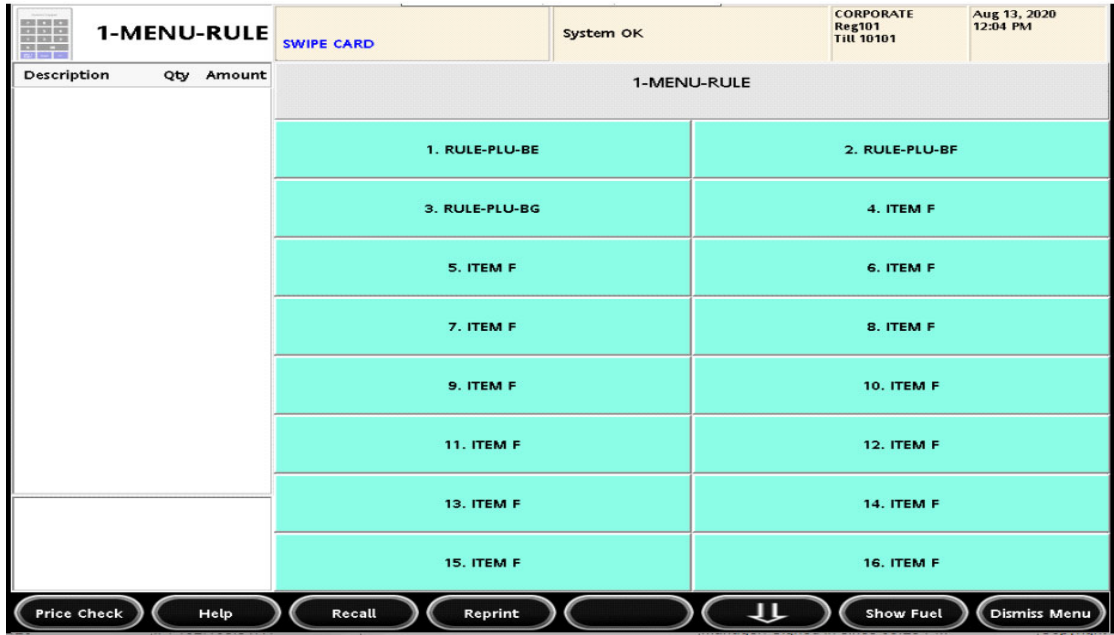


New UI



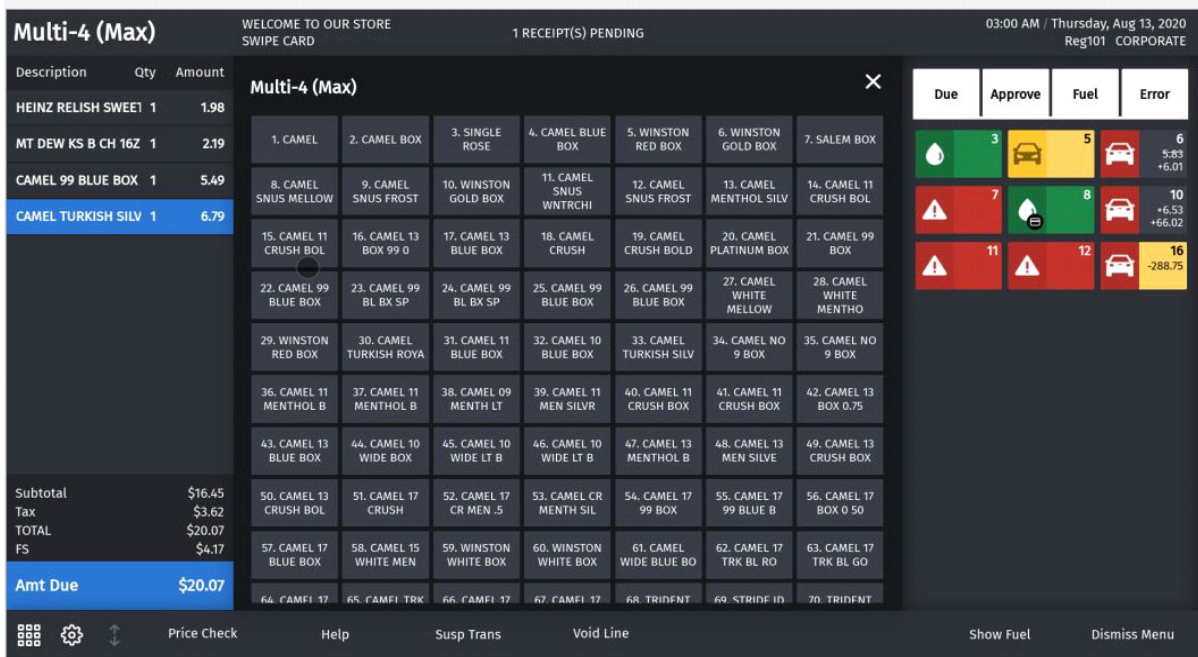
Expanded Menu

Current POS UI



New UI

If there are more menu buttons than available widget area then partial button row on top and bottom is shown. The hidden buttons can be accessed by scrolling.



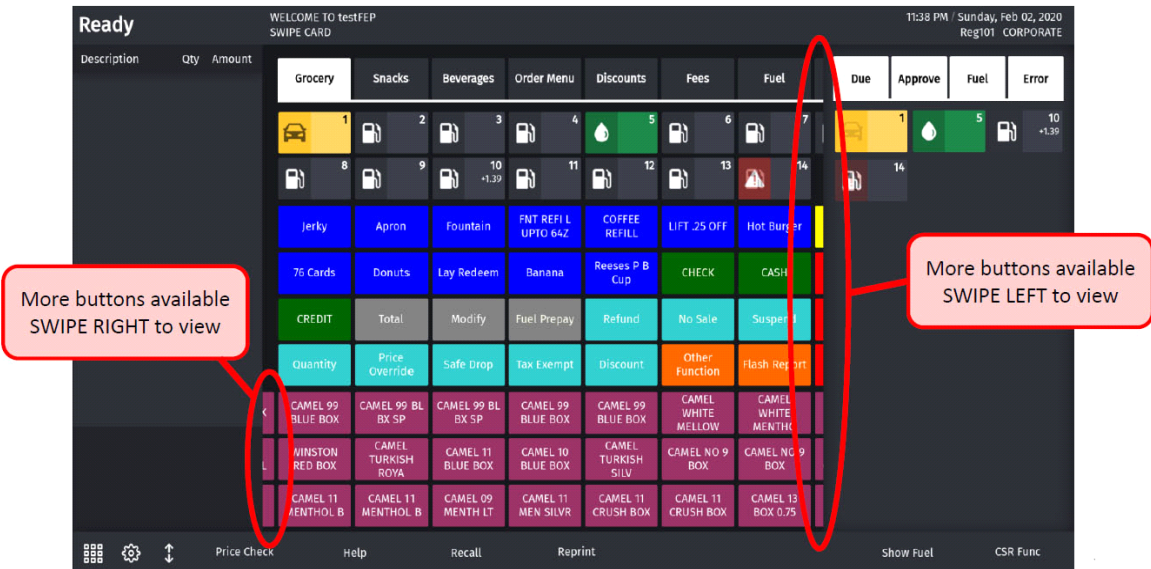
Sales Screen

If there are more menu buttons than available widget area then partial button row on left and right is shown. The hidden buttons can be accessed by scrolling.

Current POS UI



New UI



Express Panel

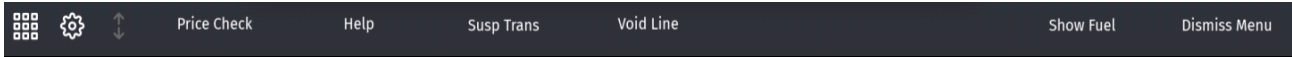
The express panel is located at the bottom of the POS.

Current POS UI



New UI

Icons for numeric keypad, settings, and item panel resize are on the left side. The background color of buttons match with theme and the buttons look like labels.



Fuel Buttons

In the current POS UI, the icons on the buttons for stop pump, help requested, calling pump and drive-off blink. The amounts with + sign are for customers owing money and amounts with - sign are for money owed to customer.


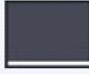
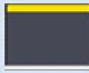
Fuel States	Current POS UI	New UI
OFFLINE		
UNASSIGNED		
IDLE		
PUMP CALLING		
AUTHORIZED		
DISPENSING		

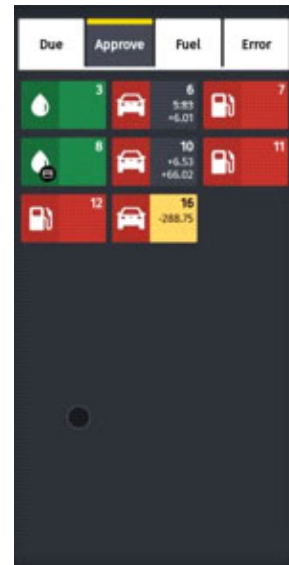
DUE		
CLAIMED		
STACKED		
DRIVE OFF		
STOP		
PREPAY AUTHORIZED		
PREPAY DISPENSING		
PREPAY RESERVED		
UNDERRUN		
DCR CALLING		
DCR APPROVED		

DCR DISPENSING		
HELP		

Fuel FilterPanel

Refer to the section “UI Elements” on page 38 to locate the Fuel Filter Panel.

Filter Status	Filter Design	Description
Filter On		Forecourt activity matching the filter <Label> will be displayed in the Python Panel
Filter Off		Forecourt activity matching the filter <Label> will NOT be displayed in the Python Panel
Hidden Activity Occurring		Forecourt activity matching the filter <Label> IS OCCURRING but will NOT be displayed in the Python Panel because the filter is turned off



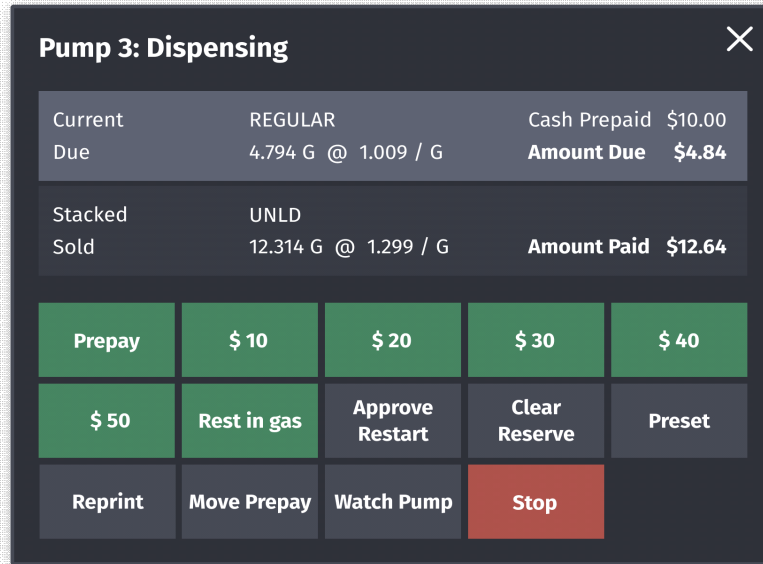
Fuel Point Detailed View

Current POS UI

PREPAY PUMP	\$10 PREPAY	\$20 PREPAY	\$40 PREPAY	\$50 PREPAY	\$100 PREPAY	REST IN GAS	
FP 4 Idle	Current:		0	0	0.000 G e	0.000 / G	
	Sold						\$0.00
	Stacked:		0	0	0.000 G e	0.000 / G	
	Sold						\$0.00
APPROVE / RESTART	STOP	CLEAR RESERVE	PRESET	REPRINT	MOVE PREPAY	WATCH PUMP DISMISS	

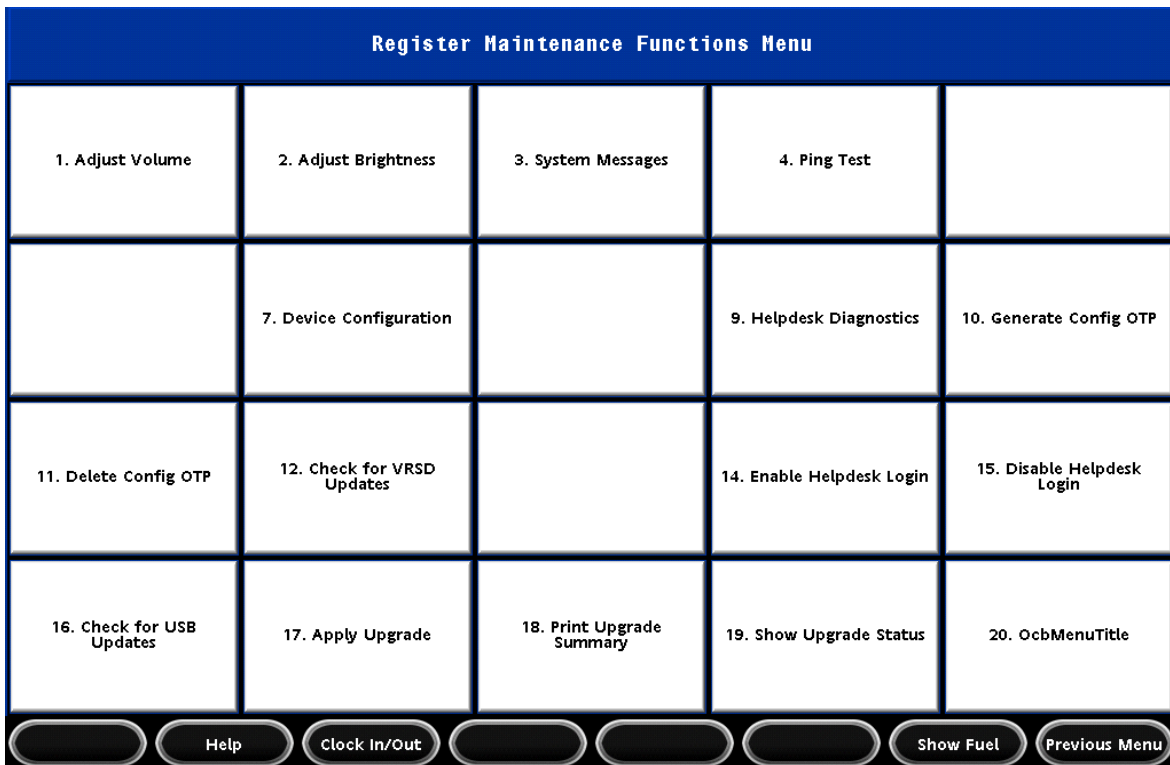
New UI

In the New UI, the widget is draggable.

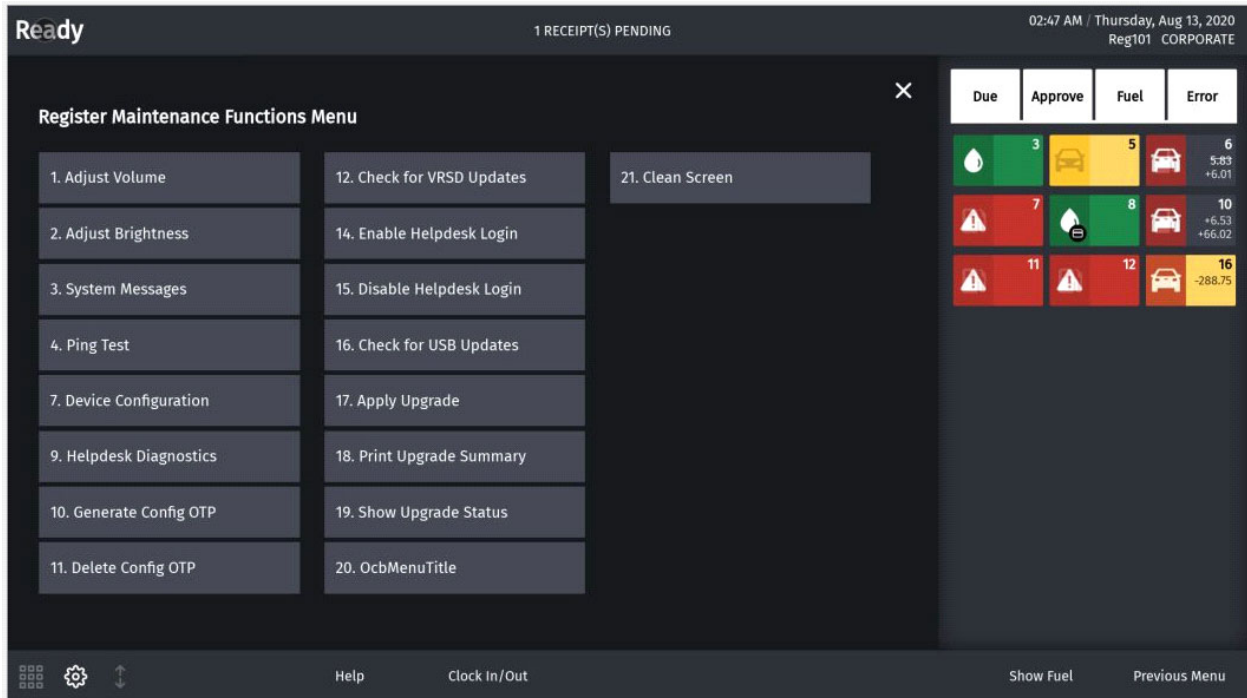


Maintenance Functions Menu

Current POS UI

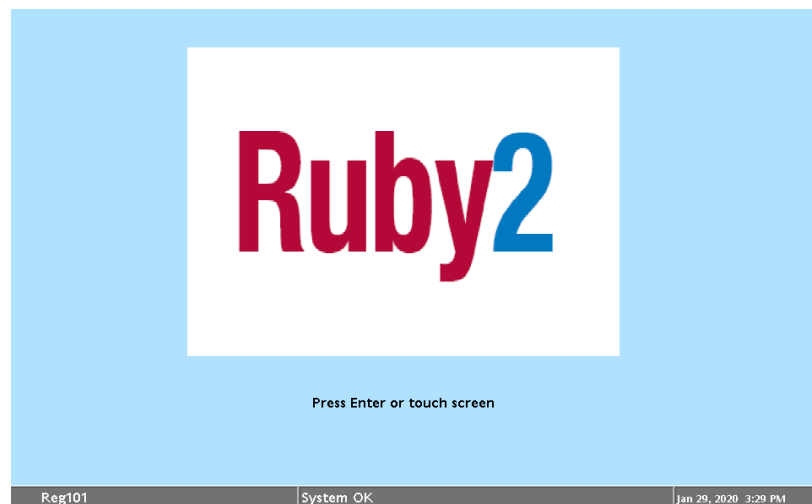


New UI



Idle Screen

Current POS UI

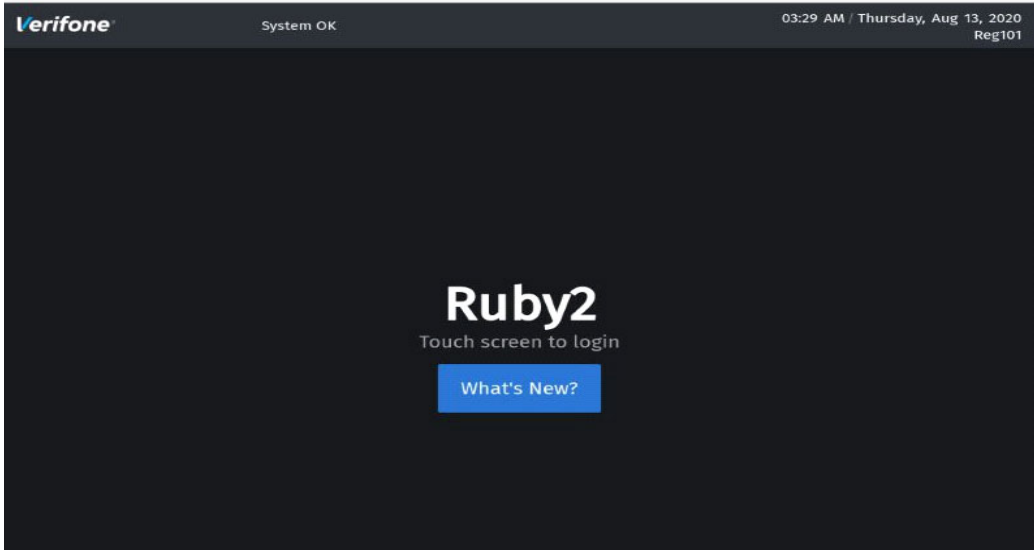
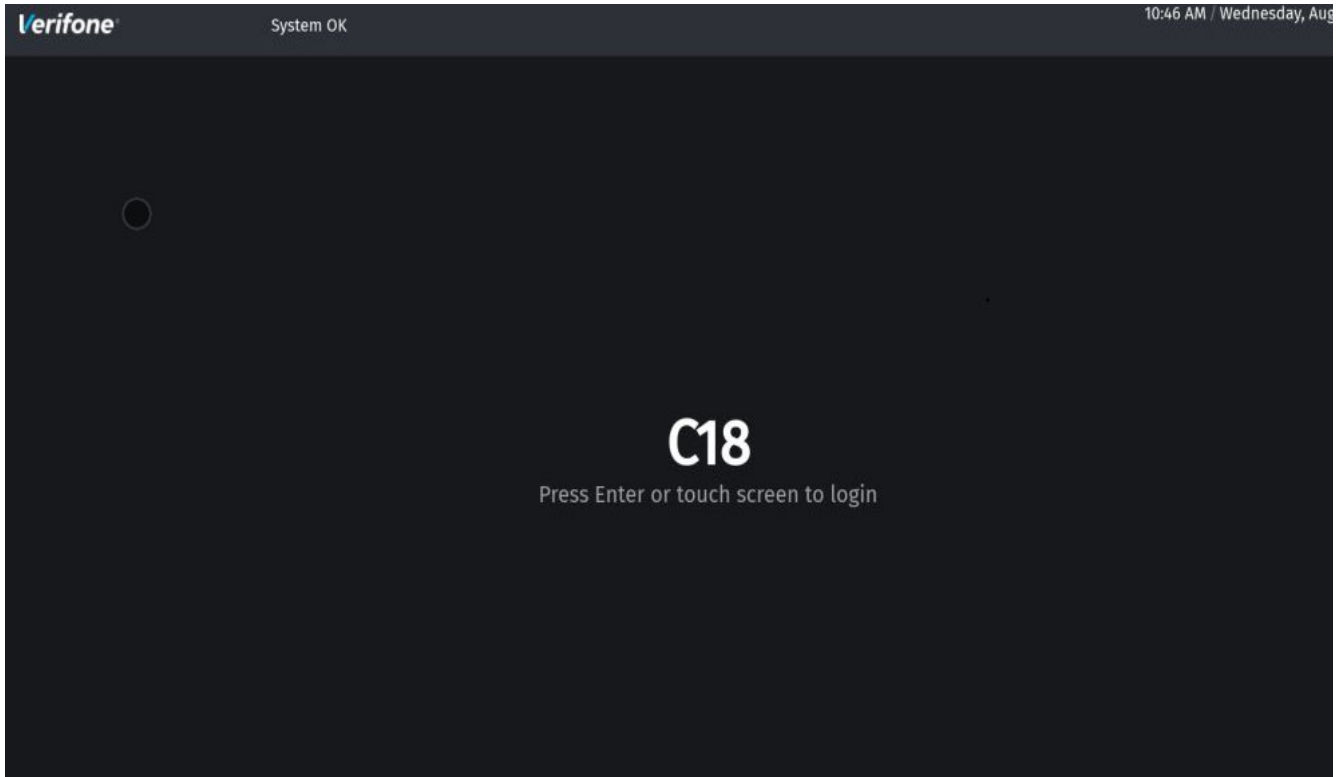


New UI

The new idle screen has the following elements:

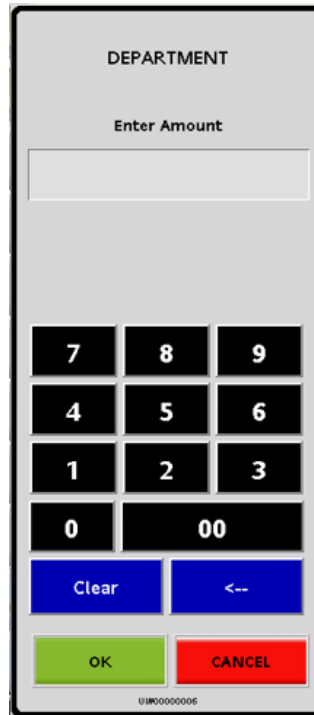
- Verifone logo on top left
- Alarm updates after Verifone logo
- Register number on top right
- Date/Time after register number

- Product logo in the center
- The label `Press Enter or Touch Screen` below product logo



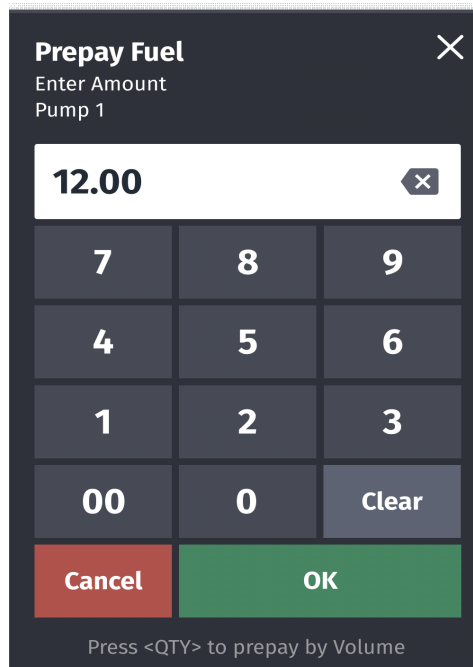
Input Overlay

Current POS UI



New UI

The new button order is **Cancel-OK** instead of **OK-Cancel**.



Keyboard Echo Area

Current POS UI



New UI

In the New UI, the calculator icon does not appear in the keyboard echo area. Refer to the section “UI Elements” on page 38, to locate the keyboard echo area.

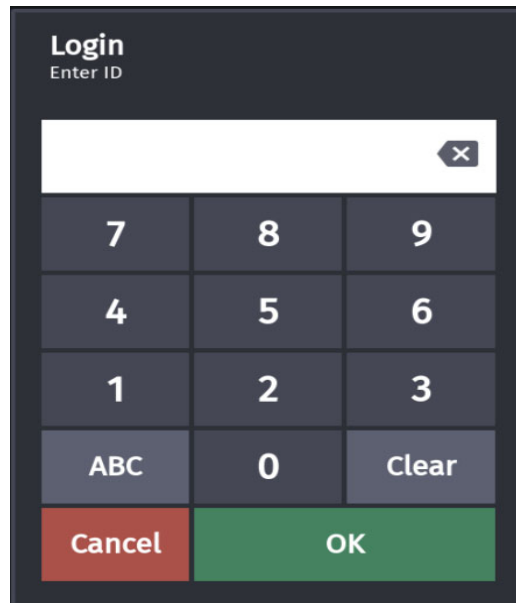


Login Overlay

Current POS UI

New UI

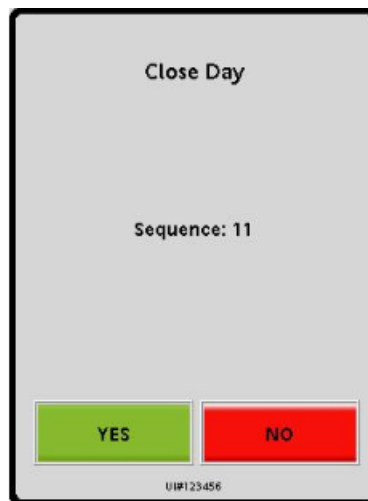
The New UI button order is Cancel-OK instead of OK-Cancel for the login overlay.



A login screen with a dark background. At the top left, the text "Login" is displayed in white, with "Enter ID" below it. A white input field is positioned below the text, containing a small grey 'x' icon on the right side. Below the input field is a numeric keypad with buttons for digits 7, 8, 9, 4, 5, 6, 1, 2, 3, ABC, 0, and Clear. At the bottom, there are two buttons: a red "Cancel" button on the left and a green "OK" button on the right.

Message Overlay

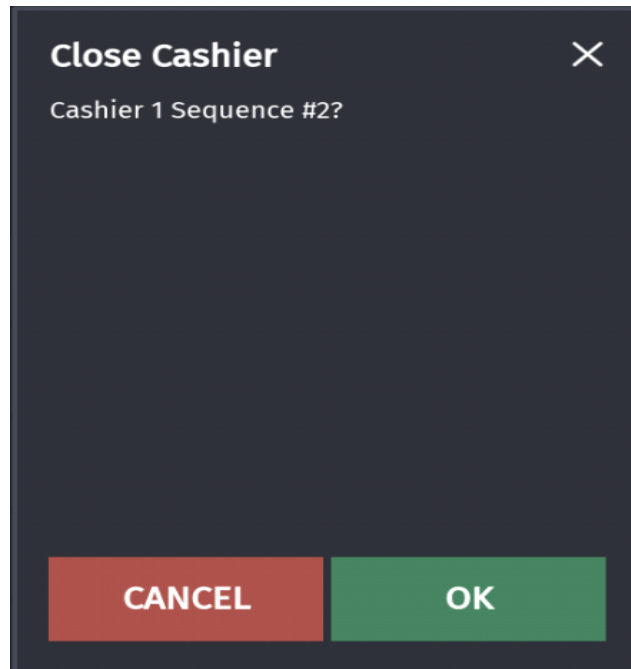
Current POS UI



A grey message overlay with a black border. The text "Close Day" is centered at the top. Below it, "Sequence: 11" is centered. At the bottom, there are two buttons: a green "YES" button on the left and a red "NO" button on the right. The text "UI#123456" is visible at the very bottom of the overlay.

New UI

In the new message overlay, the message along with header is left justified. The new button order is CANCEL-OK instead of YES-NO.



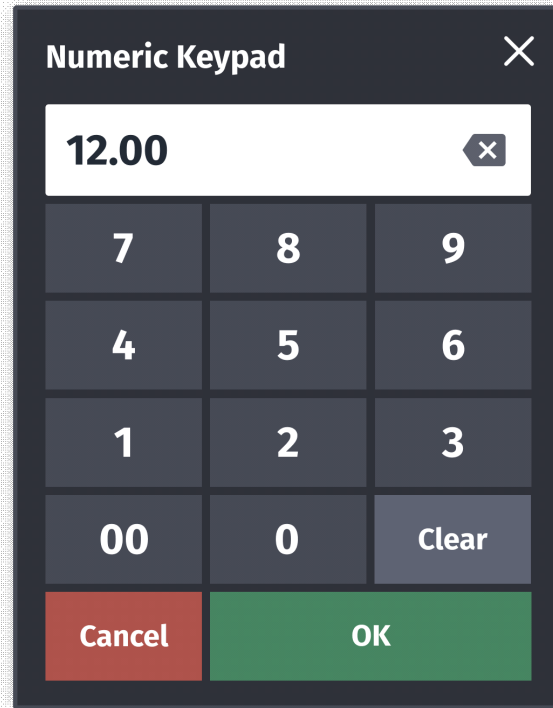
Numeric Keypad/Virtual Keypad

Current POS UI



New UI

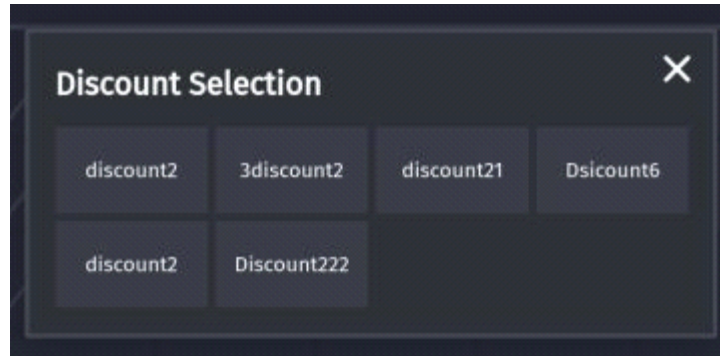
In the New UI, the header is left justified. The button order is Cancel-OK instead of OK-Cancel. The numeric keypad is movable or built-in. This feature helps to lock numeric keypad on receipt widget or keep it movable for easy access.



Overlay Menu
Current POS UI



New UI



Panel Resize

Current POS UI

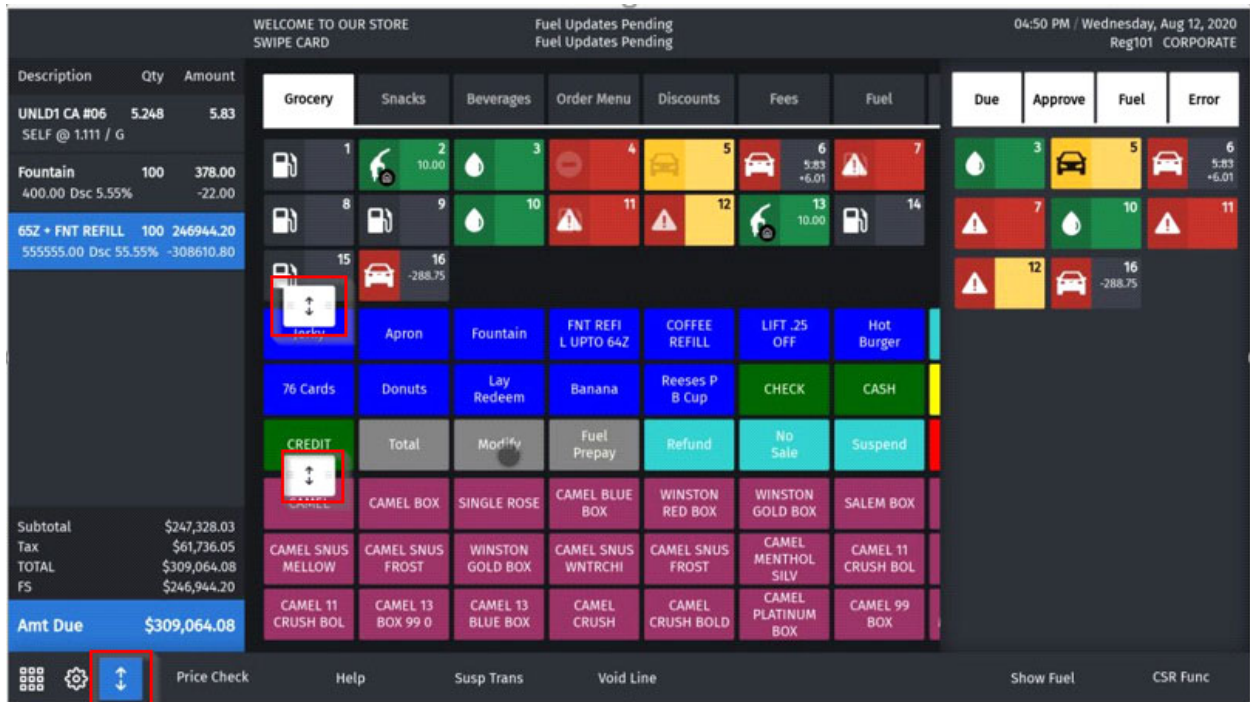
Does not have the option.

New UI

A maximum of three panels can be configured on a screen and the panels can be resized using the panel resize button on the express panel.


Rows are added or removed from panel when panel resize button is moved up/down. Row adjustments using panel resize button is preserved upon logout or reboot.

The panel resize trigger point is disabled on non-sale screens.



Receipt Preview

Current POS UI



Ready

SWIPE CARD
WELCOME TO OUR STORE

System OK

CORPORATE
Reg101
Till 10101

Aug 13, 2020
12:40 PM

Preview / Reprint Transaction


#	Date/Time	Ticket#	Type	Amount	FP#	Volume	Details
1.	8/13 8:48	1010020	CASH	0.00	03		
2.	8/13 8:45	1010019	CASH	10.00	03		
3.	8/13 8:22	1010018	CASH	552709.86			
4.	8/13 6:58	1010017	CASH	2.12			
5.	8/13 6:58	1010016	CASH	10.49			
6.	8/13 6:57	1010015	CASH	3.01			
7.	8/13 6:57	1010014	CASH	0.99			
8.	8/13 6:57	1010013	CASH	2.55			
9.	8/13 6:57	1010012	CASH	8.14			
10.	8/13 6:56	1010011	CASH	0.02			
11.	8/13 6:55	1010010	CASH	10.49			
12.	8/13 6:54	1010009	CASH	22.05			
13.	8/13 6:54	1010008	CASH	2.71			
14.	8/13 6:54	1010007	CASH	0.99			
15.	8/13 6:54	1010006	CASH	3.01			

WELCOME TO
VERIFONE
AUTOMATION LAB
HAVE YOU RUN
AUTOMATION TODAY
9999999
VeriFone Gold Disk
FL

Description	Qty	Amount
A ITEM F	1	9.99
A ITEM F	100	48848.51
55552.00 Dec	-1111.04	
Dec	-2722.05	
Dec	-2870.40	
ITEM F	100	737.00
999.00 Dec	-255.00	
Dec	-7.00	
B ALCOHOL	1	0.25
FER-1-REFUNDABLE		5.00
CANDY	100	2322.00
2.69 SLUSH	100	444442.00
EXTERNAL GIFT CARD	1	55.42
PREPAID CREDIT CARD	1	56.22
2 MEDIUM ICED COFFEE	1	2.29
A ITEM F	1	9.99
Subtotal		496488.67
Tax		56221.19
TOTAL		552709.86
CASH \$		552709.86

THANK YOU FOR


Touch to select/highlight/display or key entry# and <ENTER>, then touch <ENTER> or <Reprint> to print receipt



Advanced Options

Help

Reprint



Show Fuel

Dismiss List

New UI

In the New UI there are no pagination ovals and left/right arrows.

If there are more buttons than the available widget area, then partial row on the ends (top, bottom or both) indicate additional information; they also serve as navigation aids to scroll and access information outside the view area.

Ready DCR Driver Init Pending 10:30 AM / Friday, Sep 18, 2020
Reg102 CORPORATE

Touch to select/highlight/display or key entry# and <ENTER>, then touch <ENTER> or <Reprint> to print receipt

Preview / Reprint Transaction

WELCOME TO
OUR STORE
VP13067411001
VeriFone Gold Disk
FL

Description	Qty	Amount
T 32Z FOUNTAIN DRINK	1	1.49
T 32Z FOUNTAIN DRINK	1	1.49
T 32Z FOUNTAIN DRINK	1	1.49
T 32Z FOUNTAIN DRINK	1	1.49
Fountain	1	4.00
Fountain	1	4.00
T 65Z + FNT REFILL	1	1.39
T 65Z + FNT REFILL	1	1.39
T 65Z + FNT REFILL	1	1.39
T 65Z + FNT REFILL	1	1.39
T FNT REFILL	1	1.19
T FNT REFILL	1	1.19
T FNT REFILL	1	1.19
T 44Z FOUNTAIN DRINK	1	1.59
T 44Z FOUNTAIN DRINK	1	1.59
T 44Z FOUNTAIN DRINK	1	1.59
LARGE COFFEE REFIL	1	1.99
LARGE COFFEE REFIL	1	1.99
LARGE COFFEE REFIL	1	1.99
T HEIN 24OZ BOT	1	3.89
T HEIN 24OZ BOT	1	3.89
T HEIN 24OZ BOT	1	3.89

#	Date/Time	Ticket#	Type	Amount	FP#	Volume	Details
2.	9/18 10:29	1020007	CASH	4.18			
3.	9/18 10:29	1020006	CASH	3.23			
4.	9/18 10:28	1020005	SAFELOAN	0.02			
5.	9/18 10:28	1020004	CASH	1.00			
6.	9/18 10:27	1020003	CASH	228.13			
7.	9/18 10:15	1020002	SAFEDROP	5.00			CASH
8.	9/18 9:27	1020001	CASH	60.15			
9.	9/18 7:13	1010002	SAFEDROP	0.22			CASH
10.	9/18 7:10	1010001	CASH	10.00	03		

Due	Approve	Fuel	Error
1	3	7	9

Advanced Options
Help
Reprint
Show Fuel
Dismiss List

Receipt Widget

Current POS UI

Description	Qty	Amount
ITEM F	1	9.99
MEDIUM ICED CO 10072607.92		
122263.00 Dsc		-41569.42
Dsc		-7.00
Dsc		-8068.66
Dsc		-10.00
LARGE ICED COF 1	1	1.78
2.69 Dsc		-0.91
ITEM F	12	39.97
119.88 Dsc		-40.80
Dsc		-26.89
Dsc		-5.22
Dsc		-7.00
EXTERNAL GIFT	1	25.85
HOT DOG JUMBO	5327094.66	
LARGE ICED COF 1	1	1.78
2.69 Dsc		-0.91
CHARITY	1	1.41
CANDY	1	4.55
Subtotal \$99,808.97		
Tax \$3,283.09		
TOTAL \$103,092.06		
SD: \$1.41 FS: \$5.54		
Amt Due \$103,092.06		

New UI

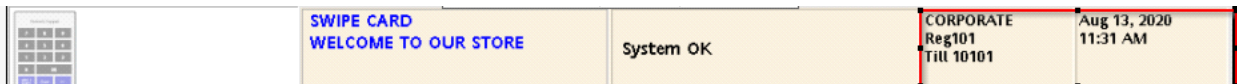
In the New UI:

- There is no special indentation for sub-item lines.
- Only color blue is used to highlight last item and item selected for touch-to-modify.
- The payment lines grow from bottom to top as item lines increase from top to bottom and these meet halfway.
- All the labels on Total widgets are left justified.
- The hidden lines can be seen upon up/down scrolling.

Description	Qty	Amount
TAXABLE	52	0.61
2.60 Dscount6		-0.88
Dscount6		-0.58
discount2		-0.11
discount2		-0.10
Dscount6		-0.32
NON-TAXABLE	1	0.02
CHECK FEE	100	2.00
LOTTERY	1	0.02
CANDY	1	0.02
CHIPS	1	0.23
LARGE ICED COFFE	100	159.79
269.00 3discount2		-26.90
Dscount6		-82.31
MEDIUM ICED COFFE	1	3.30
Subtotal		\$176.86
Tax		\$20.36
TOTAL		\$197.22
Amt Due		\$197.22

Register Info Area

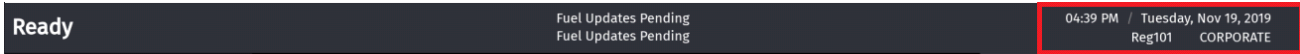
Current POS UI



New UI

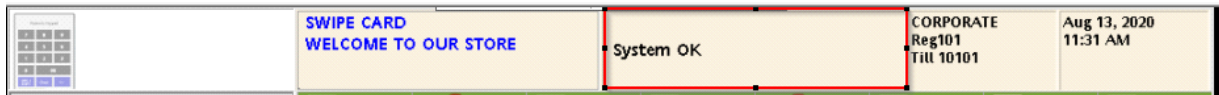
In the New UI, the first line has date time in the format <time>, <DayOfWeek>, <Month>, <DayOfMonth>, <Year>. The second line has register number and cashier name.

The till information is no longer shown in this area.



System Message Area

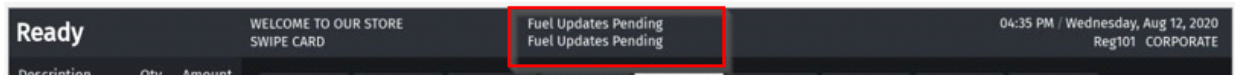
Current POS UI



New UI

The following are the changes as per New UI:

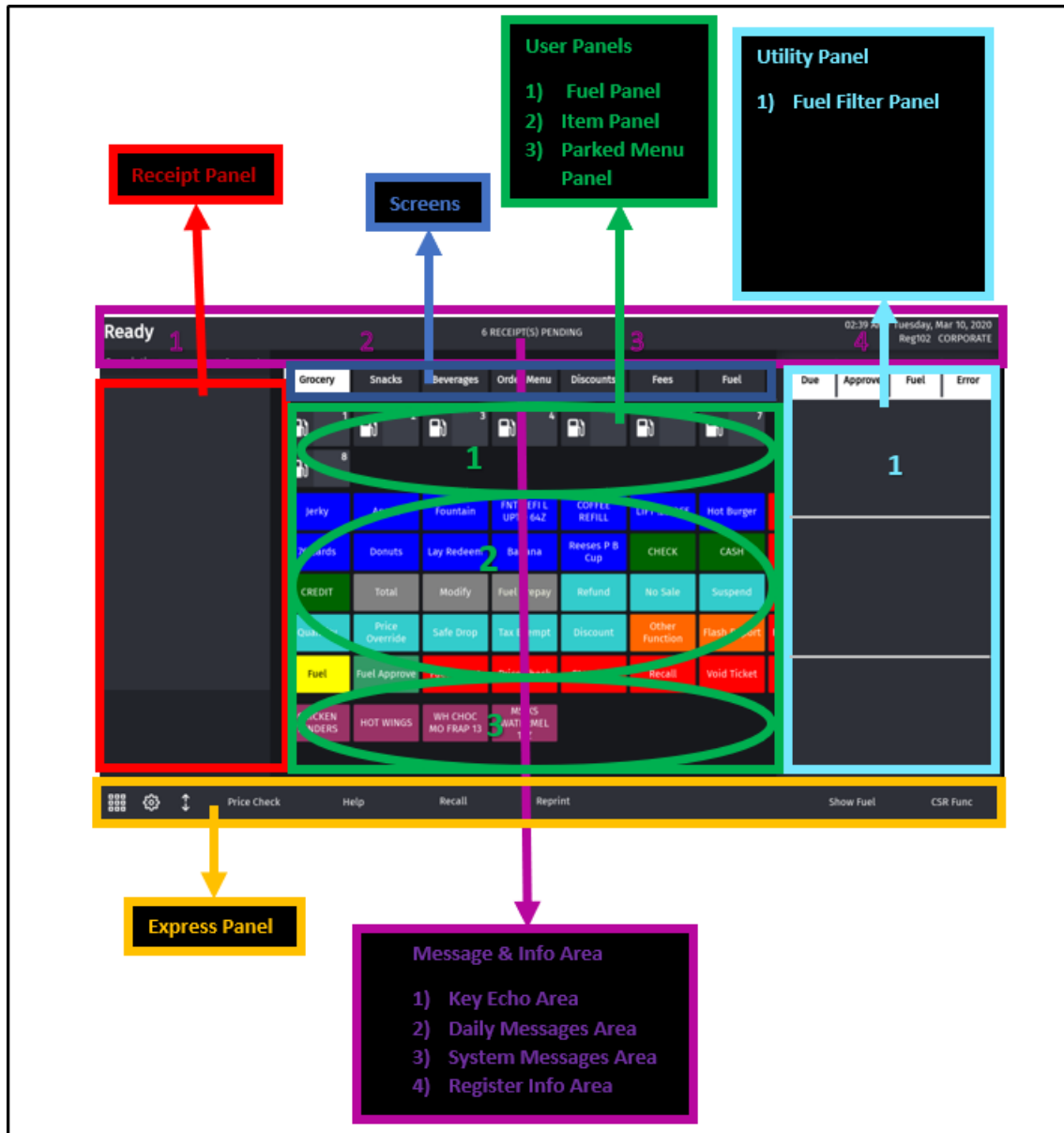
- Maximum two lines are displayed.
- If there are more than two lines, the messages rotate.
- Touch the widget to maximize it in order to see more messages at a time.



3 CONFIGURING USER INTERFACE ELEMENTS

UI Elements

Following schematic shows the UI elements:





C18 exclusive features like the Utility Area, Application Selector and Utility Panel On/Off toggle are not available in existing POS types Topaz 410 and Ruby2.

Configuration Using Config Client

How to configure buttons on the touch screen has changed. Instead of having screens with buttons, the user can now configure panels within screens, and have as many item buttons as they want on the panels.

The current POS system updated with the new UI does not have the Utility Area. Also, the cashier preferences screen does not have the utility panel On/Off toggle.

Users are able to select dark or light themes from Cashier Preference screen.

Forms have been added in the Verifone Commander **Configuration Client > Store Operations > Touch Screen** to configure the touch screen UI.

The touch screen configuration is divided into three parts:

- Panel Configuration
- Screen Configuration
- Register Configuration

Register: Each Register/POS can be configured to have one or more screens.

Screens - Each screen has a name and can be configured to have up to three panels. All screens appear as tabs on the register.

User Panel: The area within a screen with these panels is collectively referred to as User Panel.

Panel Configuration

Go to **Store Operations > Touch Screen > Panel Configuration** to configure panels and to configure items assigned to panels.

Panels are of the following types:

- Item Panel
- Parked Menu Panel
- Fuel Panel

A screen can have multiple item panels. A screen can have only one fuel panel and one parked menu panel. Also, only one fuel panel and parked menu panel can be assigned to a POS register; but, these fuel panel and parked menu panels can be included in multiple screens on the register.

Item Panels

Use Item Panels form to configure panels that have PLU, Department, MOP, Function or Menu Key items.

Touch Screen Configuration : Panel Configuration

Item Panels | Parked Menu Panels | Fuel Panels

Delete

Select Item Panel

- OrderMenu
- Beverages
- Snacks
- Grocery
- Discounts
- Fees
- Functions

Name:

Included Items

Type	Items	Preview
Function	Approve Fuel	Approve Fuel
Function	Fuel Preset	Fuel Preset
Function	Not Used	
Function	Gift Card Activate	Gift Card Act

1. Click **Add**.
2. Enter Name of the Item Panel.
3. Click **Add Item**.

- Click Type and select the type of item from PLU, Department, MOP, Function, Menu Key or Monitoring and add the item.

Touch Screen Configuration : Panel Configuration Save Cancel

Item Panels **Parked Menu Panels** Fuel Panels

Select Item Panel

- pan1
- OrderMenu
- Beverages
- Snacks
- Grocery
- Discounts
- Fees
- 0

Name Add Duplicate

Delete

Included Items

Type	Items	Preview
<input type="text" value=""/>		

Add Item Delete Item

Preview/edit

- Click **Preview** to change item properties like line1, line2, background color and label color.

Item Properties

inactive

Line 1

Line 2

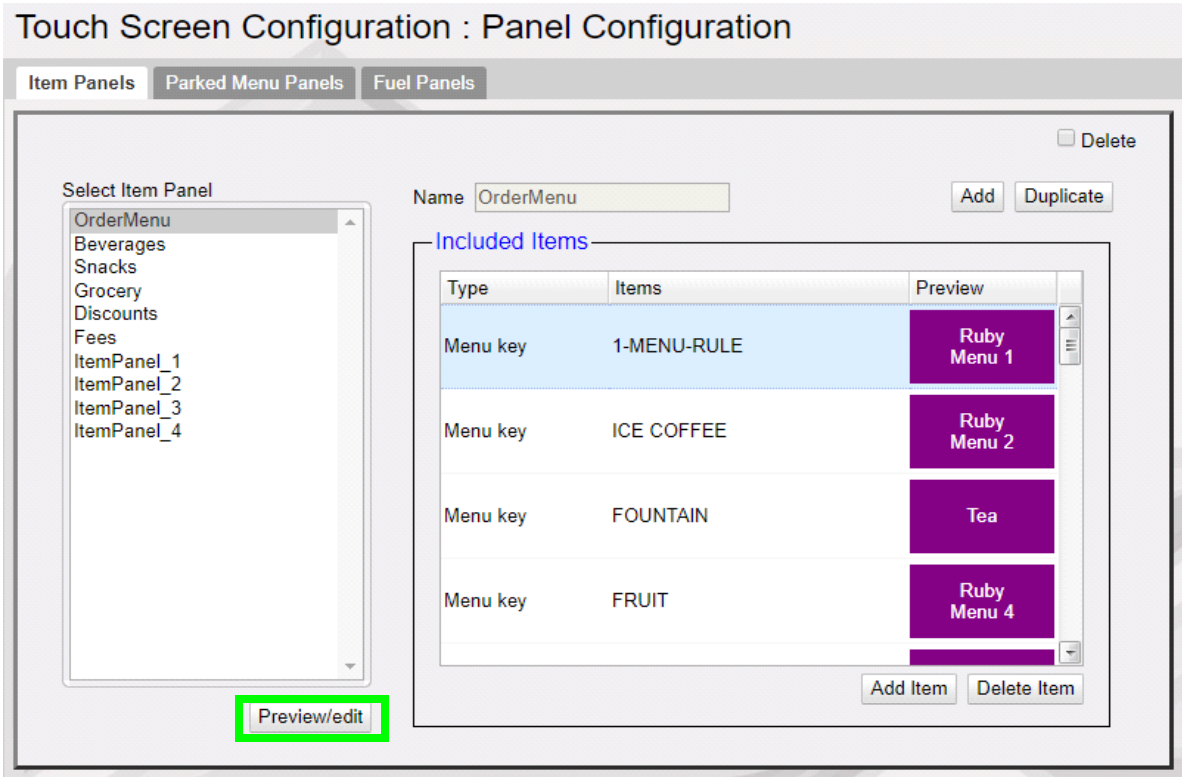
Label Color

Background Color

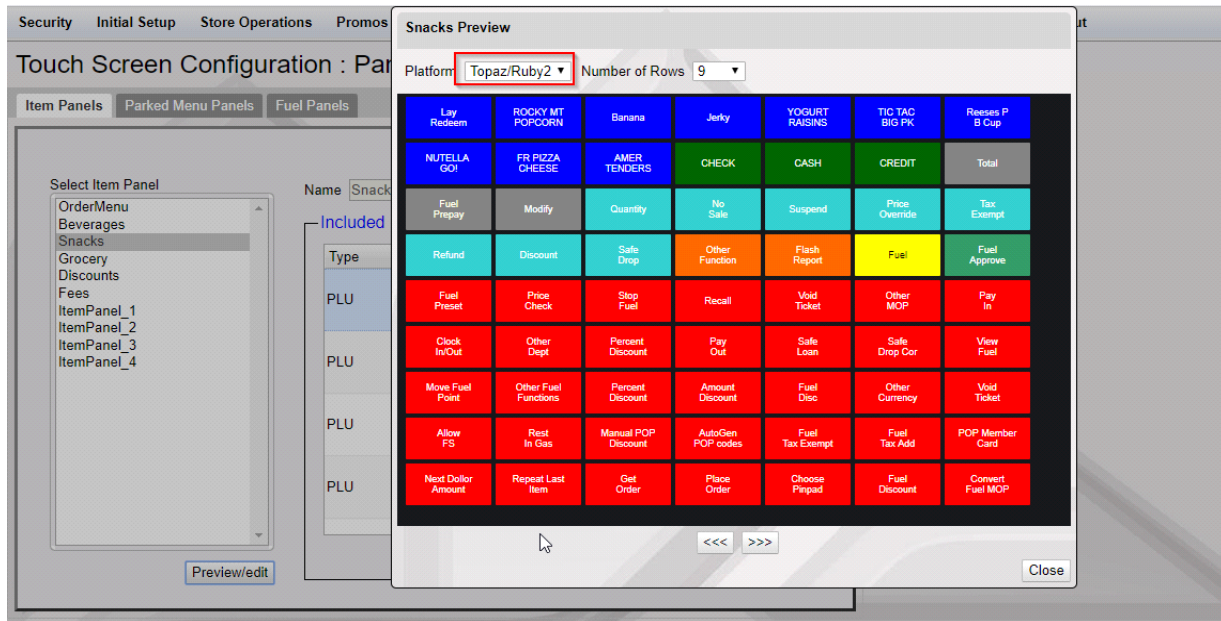
Save Cancel

- Items can be moved in the panel by selecting the item and dragging and dropping to the desired position.
- Click **Save**.

- Click on Preview/edit button to view how the item panel appears on the POS screen and to select and edit items from the preview.



Item Panel Preview for Topaz/Ruby2 POS



Item Panel Preview for C18 POS With Utility Panel

Snacks Preview

Platform: C18 Number of Rows: 9 Utility Panel

Lay Redem	ROCKY MT POPCORN	Banana	Jerky	YOGURT RAISINS	TIC TAC BIG PK	Reeses P B Cup	NUTELLA GO!	FR PIZZA CHEESE	AMER TENDERS
CHECK	CASH	CREDIT	Total	Fuel Prepay	Modify	Quantity	No Sale	Suspend	Price Override
Tax Exempt	Refund	Discount	Safe Drop	Other Function	Flash Report	Fuel	Fuel Approve	Fuel Preset	Price Check
Stop Fuel	Recall	Void Ticket	Other MOP	Pay In	Clock In/Out	Other Dept	Percent Discount	Pay Out	Safe Loan
Safe Drop Cor	View Fuel	Move Fuel Point	Other Fuel Functions	Percent Discount	Amount Discount	Fuel Disc	Other Currency	Void Ticket	Allow FS
Rest In Gas	Manual POP Discount	AutoGen POP codes	Fuel Tax Exempt	Fuel Tax Add	POP Member Card	Next Dollar Amount	Repeat Last Item	Get Order	Place Order
Choose Pinpad	Fuel Discount	Convert Fuel MOP							

Status: Connected Site: CL120 IP: 192.168.31.11 manager: Signed in since 03:39 AM Copyright © 2020 VeriFone Inc.

Item Panel Preview for C18 Without Utility Panel

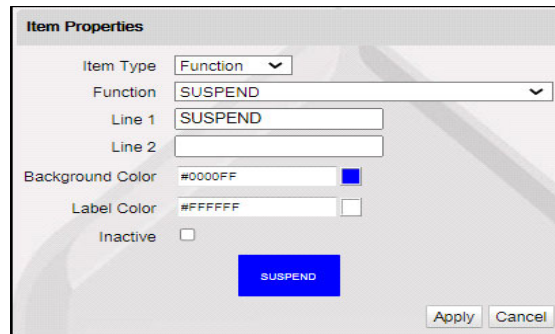
Snacks Preview

Platform: C18 Number of Rows: 9 Utility Panel

Lay Redem	ROCKY MT POPCORN	Banana	Jerky	YOGURT RAISINS	TIC TAC BIG PK	Reeses P B Cup	NUTELLA GO!	FR PIZZA CHEESE	AMER TENDERS
CHECK	CASH	CREDIT	Total	Fuel Prepay	Modify	Quantity	No Sale	Suspend	Price Override
Tax Exempt	Refund	Discount	Safe Drop	Other Function	Flash Report	Fuel	Fuel Approve	Fuel Preset	Price Check
Stop Fuel	Recall	Void Ticket	Other MOP	Pay In	Clock In/Out	Other Dept	Percent Discount	Pay Out	Safe Loan
Safe Drop Cor	View Fuel	Move Fuel Point	Other Fuel Functions	Percent Discount	Amount Discount	Fuel Disc	Other Currency	Void Ticket	Allow FS
Rest In Gas	Manual POP Discount	AutoGen POP codes	Fuel Tax Exempt	Fuel Tax Add	POP Member Card	Next Dollar Amount	Repeat Last Item	Get Order	Place Order
Choose Pinpad	Fuel Discount	Convert Fuel MOP							

Status: Connected Site: CL120 IP: 192.168.31.11 manager: Signed in since 03:39 AM Copyright © 2020 VeriFone Inc.

Click on any item on the panel to edit.



The 'Item Properties' dialog box contains the following fields and controls:

- Item Type: Function (dropdown)
- Function: SUSPEND (dropdown)
- Line 1: SUSPEND (text input)
- Line 2: (empty text input)
- Background Color: #0000FF (color picker)
- Label Color: #FFFFFF (color picker)
- Inactive:
- SUSPEND (blue button)
- Apply (button)
- Cancel (button)



Select an Item panel and click Duplicate to create a duplicate item panel from the existing item panels.

Touch Screen Configuration : Panel Configuration

Item Panels | Parked Menu Panels | Fuel Panels

Select Item Panel

- OrderMenu
- Beverages
- Snacks
- Grocery
- Discounts
- Fees
- ItemPanel_1
- ItemPanel_2
- ItemPanel_3
- ItemPanel_4

Name: OrderMenu

Buttons: Add, Duplicate (highlighted in green), Delete

Included Items

Type	Items	Preview
Menu key	1-MENU-RULE	Ruby Menu 1
Menu key	ICE COFFEE	Ruby Menu 2
Menu key	FOUNTAIN	Tea
Menu key	FRUIT	Ruby Menu 4

Buttons: Add Item, Delete Item

Preview/edit

Duplicate Panel

Choose a Item Panel to duplicate OrderMenu ▼

New Item Panel name

Parked Menu Panels

Use Parked Menu Panels form to configure Parked Menu. This feature displays each menu item on individual buttons of the parked menu panel so that a single touch adds the item to the transaction.

Refer to the **Menus** section in **Verifone Commander User Reference** to get help on configuring different types of menus.

Touch Screen Configuration : Panel Configuration

Item Panels **Parked Menu Panels** Fuel Panels

Select Parked Menu Panel

Menu Chain

Functions

Multi-Select

Name

Menu Properties

Default Parked Menu MenuCh-4 (multiselec ▼)

Text Color

Background Color

Delete

1. Click **Add**.
2. Enter a name for the Parked Menu panel.

3. In Menu Properties, select a Default Parked Menu.
4. Select the text color and the background color for the items in the panel.
5. Click **Save**.



Select a Parked Menu Panel and click Duplicate to create a duplicate parked menu panel from the existing parked menu panels.

Fuel Panels

Use Fuel Panels form to configure fuel keys for the POS touch screen.

1. Click **Add**.
2. Enter a name for the Fuel Panel.
3. In Properties, specify the ID of the beginning fueling position and the number of fueling positions to be included in the fuel panel.
4. Click **Save**.



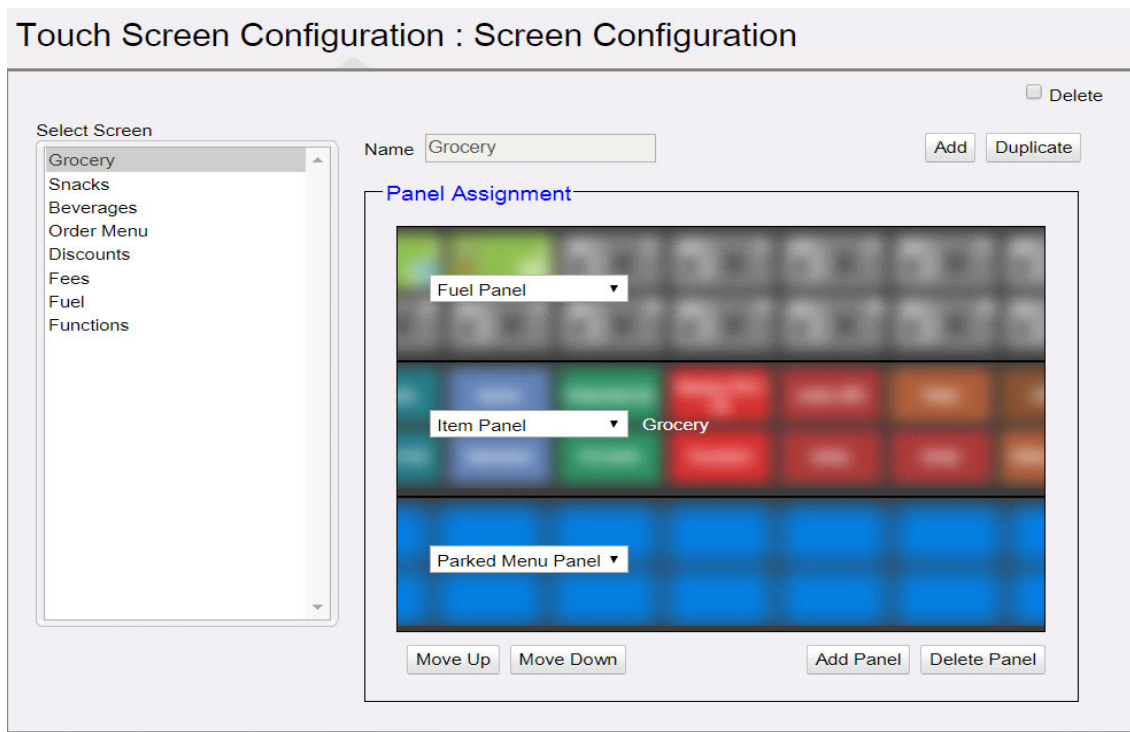
Select a Fuel panel and click Duplicate to create a duplicate Fuel Panel from the existing Fuel Panels.

Screen Configuration

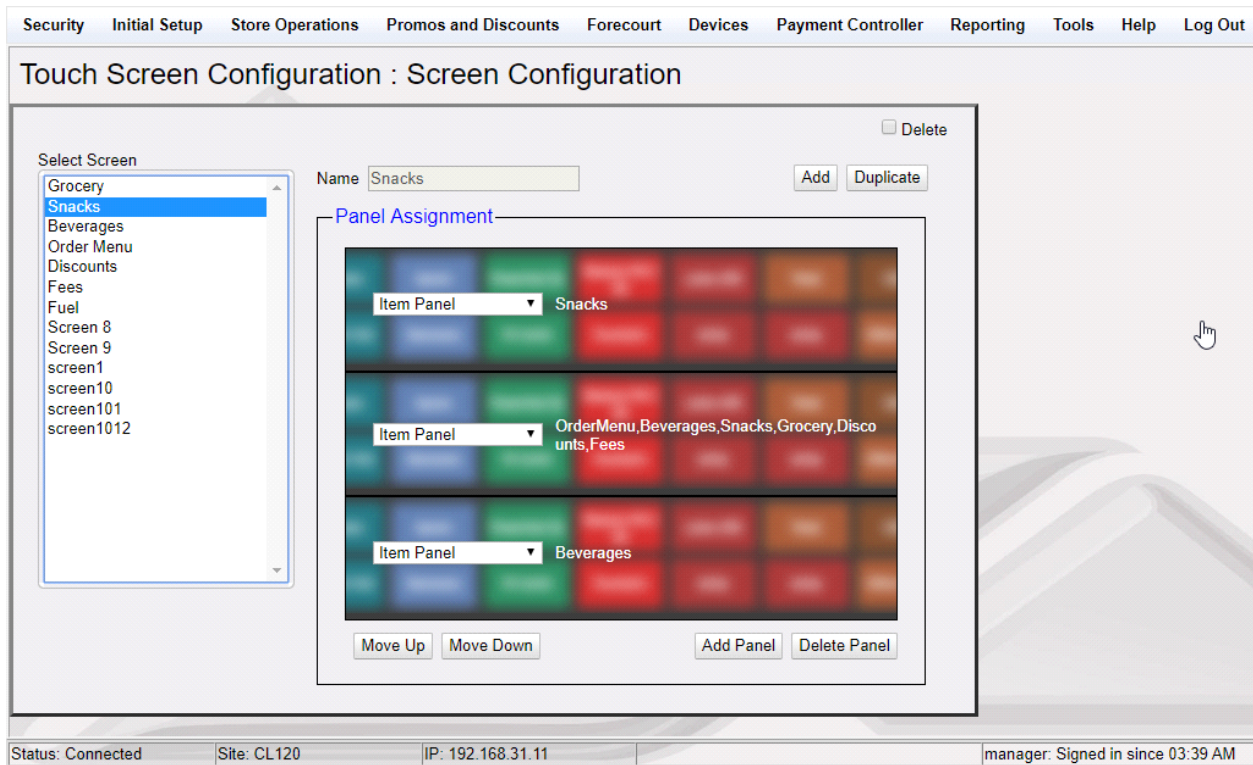
After the panels are created, create screens and assign panels to screens.

- There can be a maximum of three panels on a screen.
- A screen can have multiple item panels.
- A screen can have only one fuel and parked menu panels.
- A register can only have one fuel and parked menu panels.
- These fuel and parked menu panels can be included in multiple screens on the register.

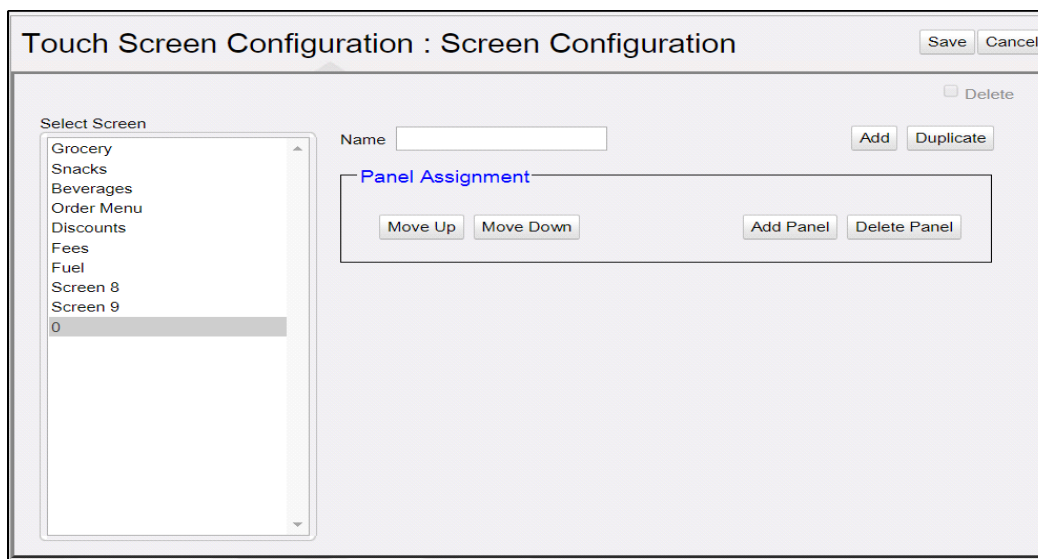
POS screen configured with a Fuel, Item and Parked Menu panels.



POS Screen configured with three Item panels.



1. To create a new screen, click **Add**.



2. Enter a name for the screen.

3. Click Add Panel.

Touch Screen Configuration : Screen Configuration

Save Cancel

Delete

Select Screen

- Grocery
- Snacks
- Beverages
- Order Menu
- Discounts
- Fees
- Fuel
- Screen 8
- Screen 9
- 0

Name

Add Duplicate

Panel Assignment

Not Assigned

Move Up Move Down Add Panel Delete Panel

4. Select the panel to assign to the screen area.

Not Assigned ▼

Fuel Panel

Item Panel

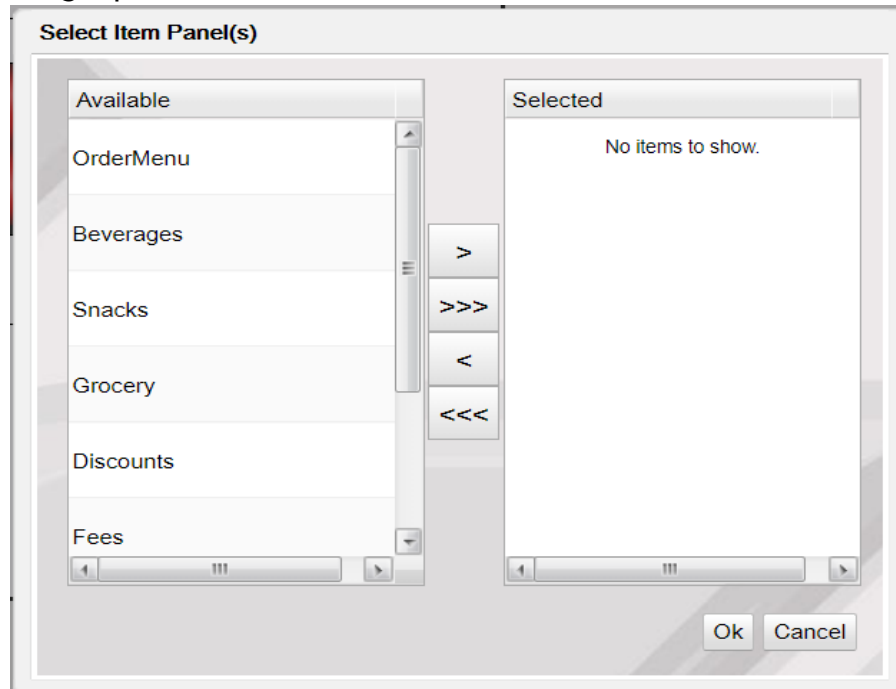
Parked Menu Panel

Not Assigned

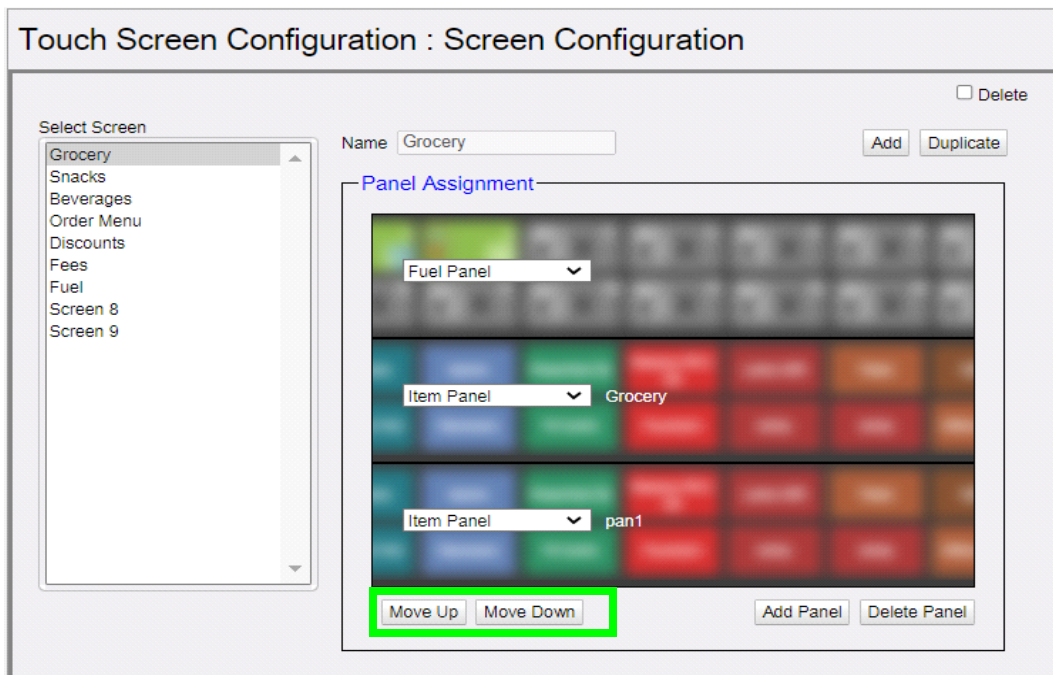


Only one type of Fuel Panel and Parked Menu Panel is allowed per register and the assignment of Fuel Panel and Parked Menu Panel to the Register is done on the Register Configuration form.

5. Selecting Item Panel takes you to a screen to select the Item Panel from the list of Item panels. More than one item panel can be selected and those will be merged into a single panel.



6. Select a panel and click Move Up or Move Down to move the panel.



Register Configuration

Use Register Configuration form to assign screens to register.

Touch Screen Configuration : Register Configuration

Select Register

Register Names

- C18 102
- Default
- topaz 101

Copy

Panel Selection

Fuel Panel FP1

Parked Menu Panel ParkedMenu1

Fixed Prepay Buttons

\$10
\$20
\$30
\$40
\$50

Available

- Screen 8
- Screen 9

>

>>>

<

<<<

Selected

- Grocery
- Snacks
- Beverages
- Order Menu
- Discounts
- Fees

Fuel Options

Zoned Fuel Control

Allow One-touch Approval

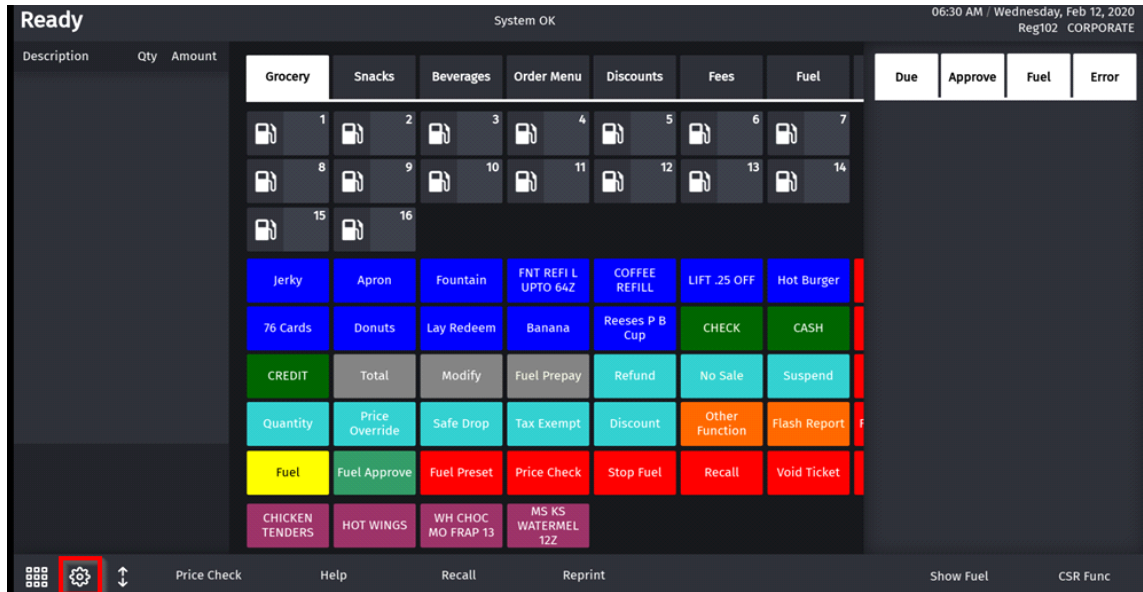
Allow One-touch Claim

1. Select **Register**.
2. In Panel Selection section, select the Fuel panel and Parked Menu Panel.
3. From the **Available** section, add the screens you want on the register to the **Selected** section.

Configuration on the POS

Cashier Preferences

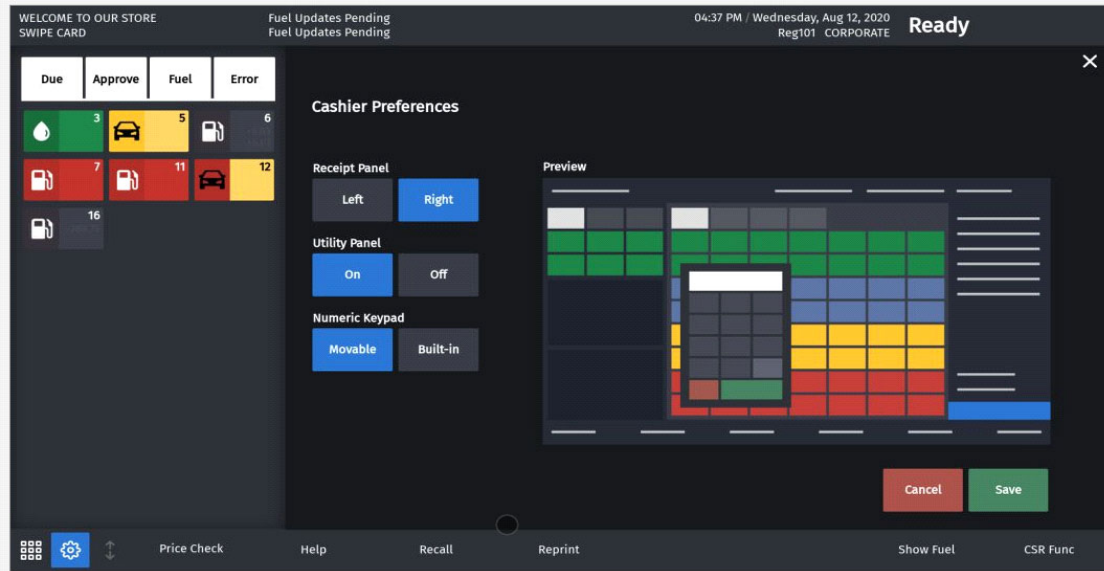
1. On the Express Panel, click settings button for the Cashier Preferences screen.



2. On the Cashier Preference screen, select if:
 - Receipt Panel should appear on the left or right side of the screen,
 - Utility Panel should be on or off,
 - The numeric keypad is movable or built-in. This feature helps to lock numeric keypad on receipt widget or keep it movable for easy access.



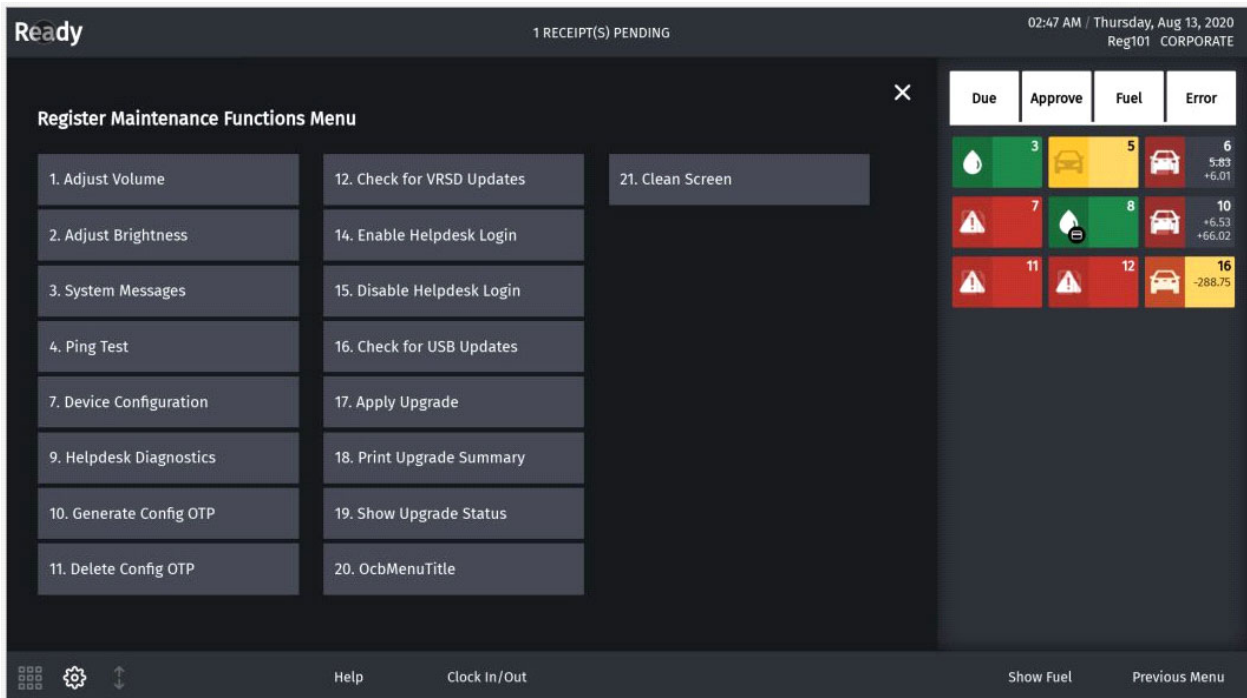
The Utility Panel ON/OFF toggle appears only for the C18 POS.

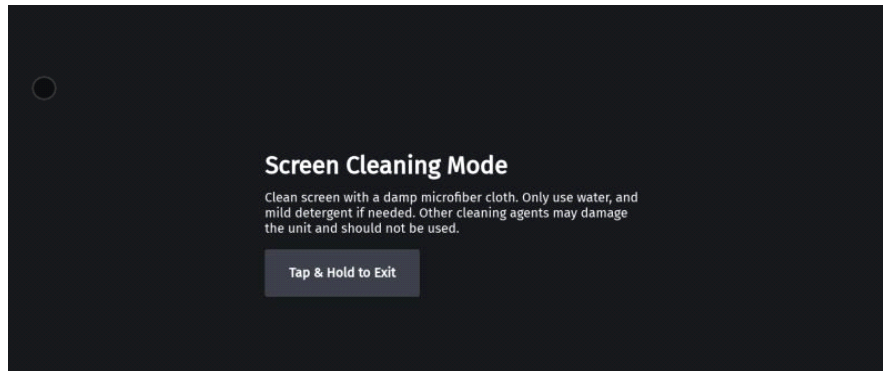


Screen Clean Mode

This feature locks the POS for cleaning the screen and keyboard. You can unlock back to sales after cleaning.

On the POS navigate to **Register Maintenance Functions Menu** using **CSR Functions > Maintenance** and select **Clean Screen**.





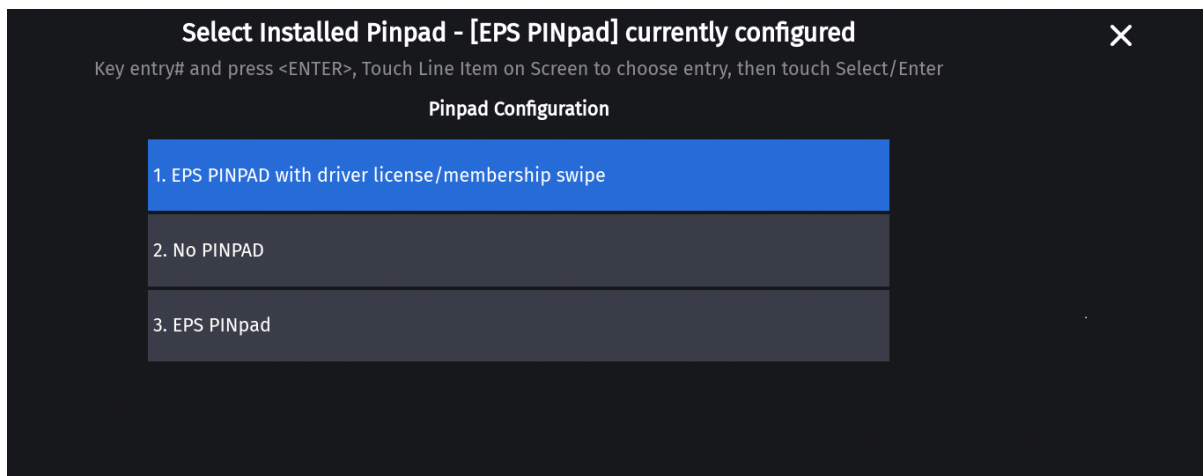
PIN Pad Configuration

In C18 POS a new option for swiping of driver's license is available from the PIN pad as the C18 does not have an MSR to swipe the ID card.

On the C18 POS go to CSR > Maintenance > Device Configuration > Pinpad Configuration and select "EPS PINPAD with driver license/membership swipe".



From base 53.12.00, this option is also available from Topaz and Ruby2.



Version Information

To get the version information, on Verifone Commander Configuration Client, go to **Help > About**.

System Configuration Manager

Version Information

Suite - testFep	2.18.04	
Base	053.02.00	2020-09-02T23:01:03+05:30
Commander Site Controller OS	1.12	2020-09-14T19:24:10+05:30
EPS	9.01.01	2020-09-14T21:02:00+05:30
MOBILE	1.00.00	2020-09-14T21:09:08+05:30
POS OS	5.01.01	2020-09-14T19:24:05+05:30
RCI	6.00.00	2020-09-14T20:32:04+05:30
TestFep	6.00.01	2020-09-14T21:04:10+05:30
WEB	5.05.00	2020-09-14T21:03:52+05:30

Topaz Version Details

Topaz 101 - Base	053.02.00	2020-09-02T23:01:03+05:30
------------------	-----------	---------------------------

C18 Version Details

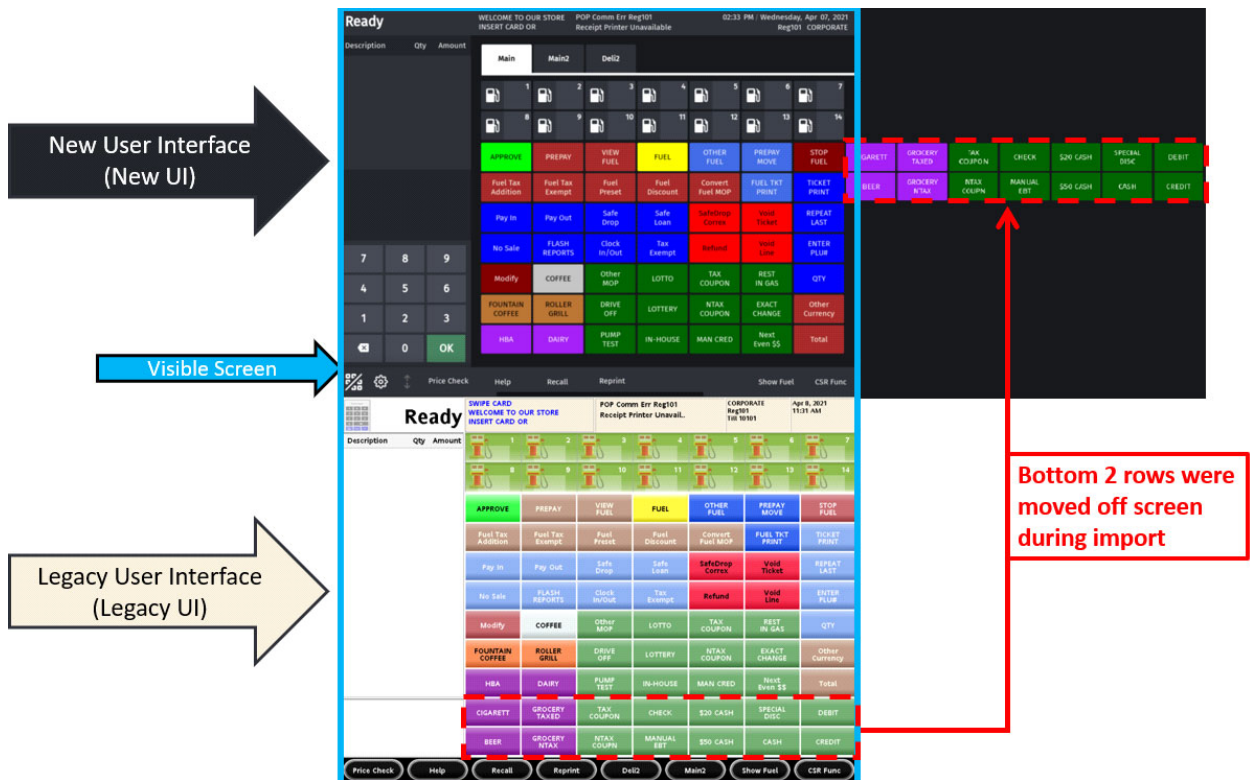
C18 102 - Base	053.02.00	2020-09-02T23:01:03+05:30
----------------	-----------	---------------------------

4 APPENDIX

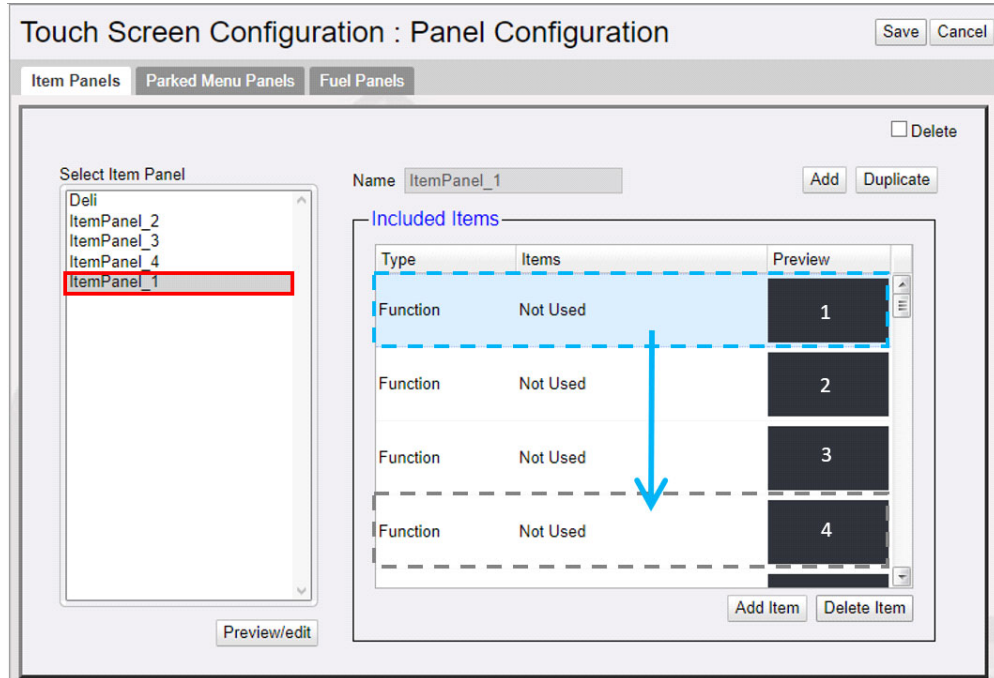
Screen Import Issues

Application Bases that are base 53 and higher will incorporate a New User Interface (New UI). This new interface will affect how a screen looks after an import from an application that is base 52 and below (Legacy UI).

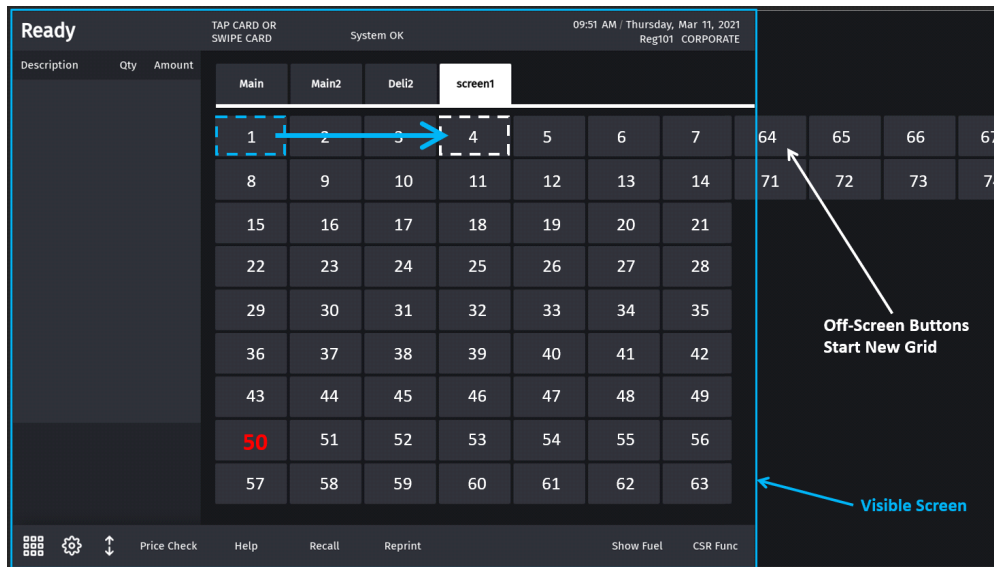
The legacy UI allowed for the configuration of 77 touch screen keys, including fuel panels and parked menu panels. Topaz XL 410 and Ruby2 POSs (using the new UI) support 63 touch screen keys (per visible screen) to make room for the new Screen Tabs. If the legacy UI (using all 77 available touch screen buttons) is imported to the New UI, it will move the bottom two rows off-screen. These buttons can then be accessed by swiping left on the touch screen.



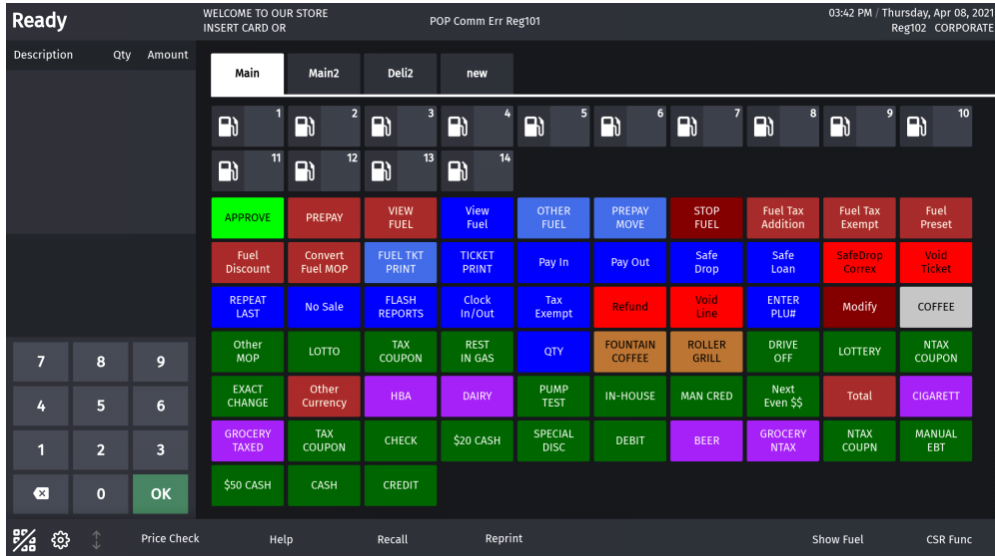
In the new Panel Configuration, items are configured in a list format. The buttons in the list are arranged from left to right on the touch screen and begin on the first row of an Item Panel.



Moving the item down the list will move the button further right on the panel. Once a row is completed within a panel on the Visible Screen, the next button will populate on the following row. Once all rows are filled within a panel on the visible screen, additional rows are populated off-screen.



If the Utility Panel is turned off on a C18, then the buttons will fill the available space on the screen before buttons are moved off-screen.



If the Utility Panel on a C18 is turned on, it behaves just like a Ruby2 or Topaz 410.

