



BLANK BUTTON PANEL TEMPLATE GUIDE





Published: MAY 6th, 2022

Verifone, Inc.
Integrated Systems
300 South Park Place Blvd., Suite 100
Clearwater, FL 33759
Office: (727) 953-4000
Fax: (408) 232-7244

Printed in the United States of America
© 2022 Verifone, Inc.
All rights reserved.

No part of this publication may be copied, distributed, stored in a retrieval system, translated into any human or computer language, or transmitted in any form or by any means, without the prior written consent of Verifone, Inc.
The content of this document is subject to change without notice. The information contained herein does not represent a commitment on the part of Verifone, Inc.
Verifone, Inc. is a registered trademark of Verifone, Inc.

All other brand names and trademarks appearing in this documentation are the property of their respective owners.

Document Revision History

| Revision Version | Revision Date | Author | Description |
|---|---------------|-----------|-------------------|
| 1.1 | 05/06/2022 | Justin_p1 | Original Document |
| | | | |
| | | | |
| | | | |
| Date of Last Review/Revision: MAY 6, 2022 | | | |

OVERVIEW

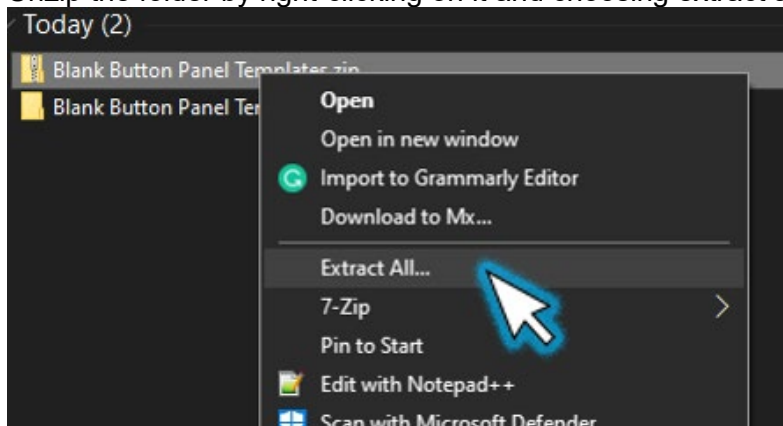
This document was intended to guide users through importing and configuring the Blank Button Panel Templates. These templates may make it easier to place buttons exactly where you want them on the panels.

Instructions include:

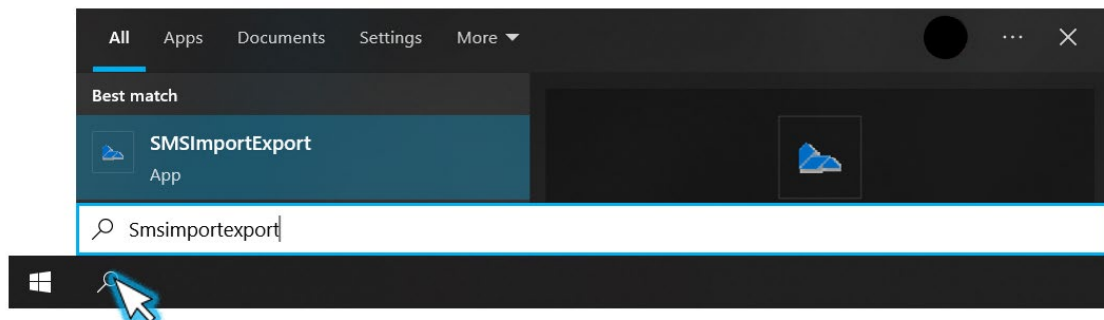
- Importing the blank panel configuration.
- Choosing the right size panel for your configuration.
- Duplicating and renaming the panel template.
- Using preview edit to configure the panels.

IMPORTING THE BLANK CONFIGURATION FILES

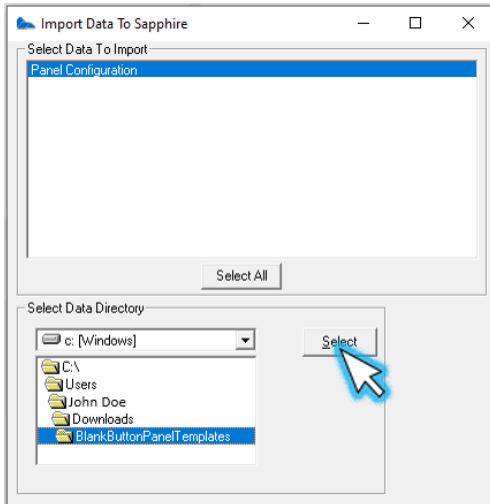
1. First, ensure you have the latest import-export utility installed on your PC. The import-export utility may be downloaded from <https://support.verifone.com> under Technical Support > support articles > Petro & Convenience > Commander & RubyCI > SMS installers > SMS import export installer.
2. Unzip the folder by right-clicking on it and choosing extract all.



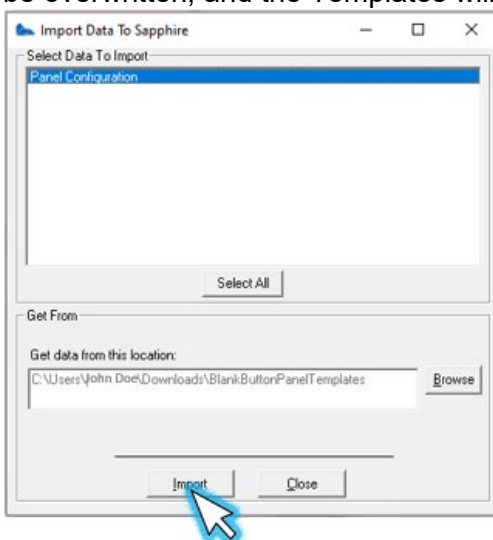
3. Access the import-export utility by searching for it in your taskbar.



4. After logging in with your user name and password, choose Import Data at the top of the program.
5. Click Browse and search for the BlankButtonPanelTemplates.

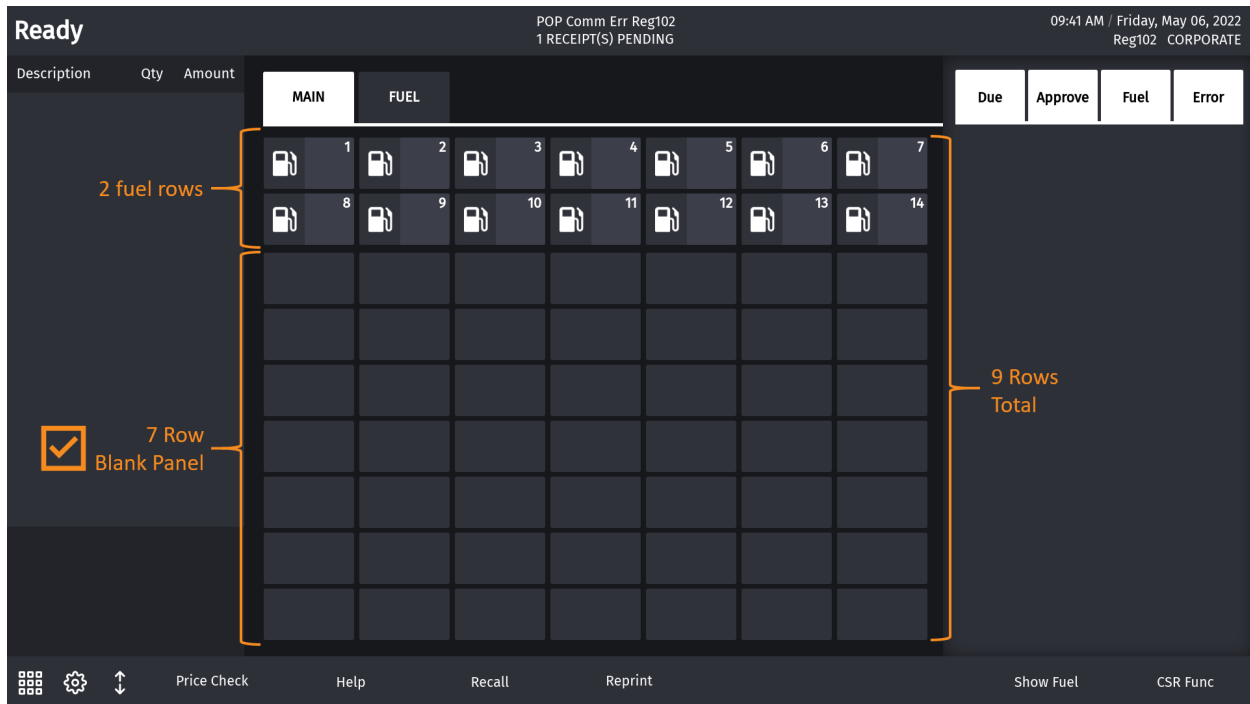


6. Select Panel Configuration and choose Import. Your existing panel configuration will not be overwritten, and the Templates will be added.



SELECTING THE CORRECT TEMPLATE TO DUPLICATE

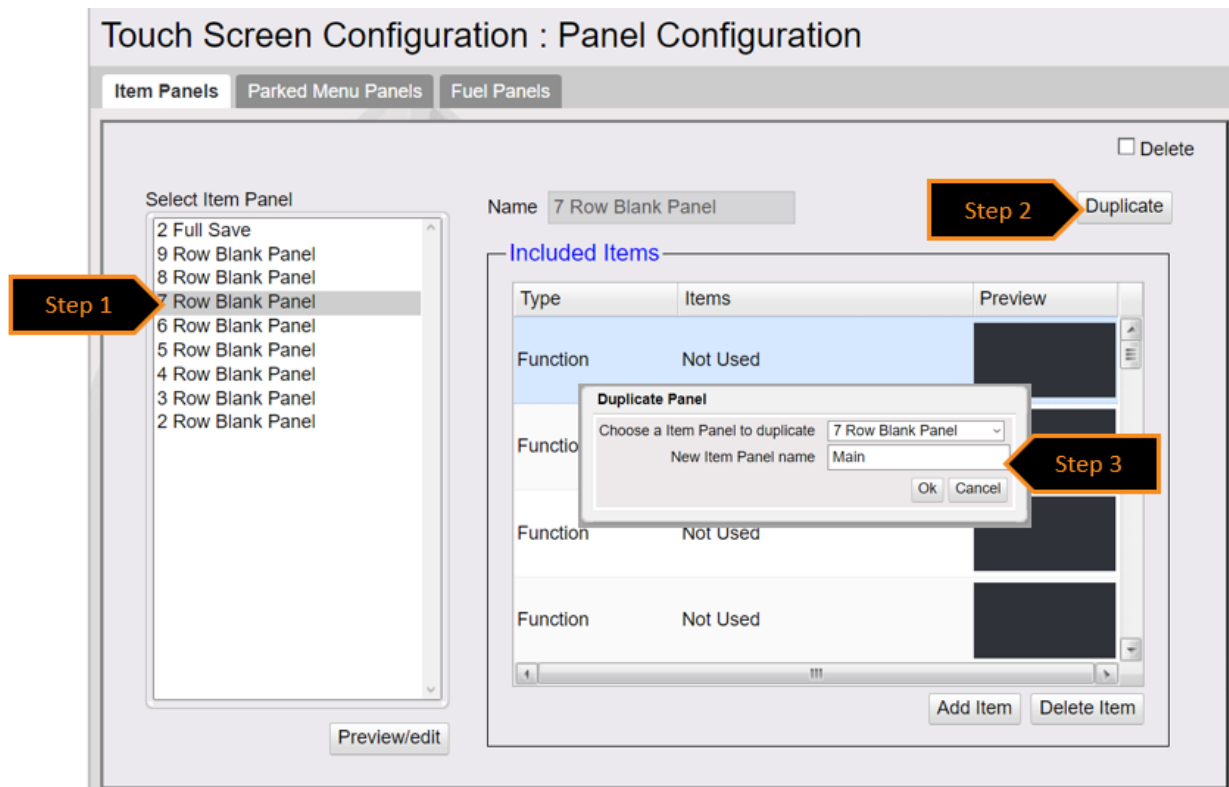
Template sizes depend on if you have another panel already configured to your screen and how many rows that panel occupies. For example, if you have a fuel panel configured on your screen, and that panel takes up two rows, you would want to select the 7 Row Blank Panel to accommodate the fuel panel on the screen.



COPYING BLANK BUTTON TEMPLATES

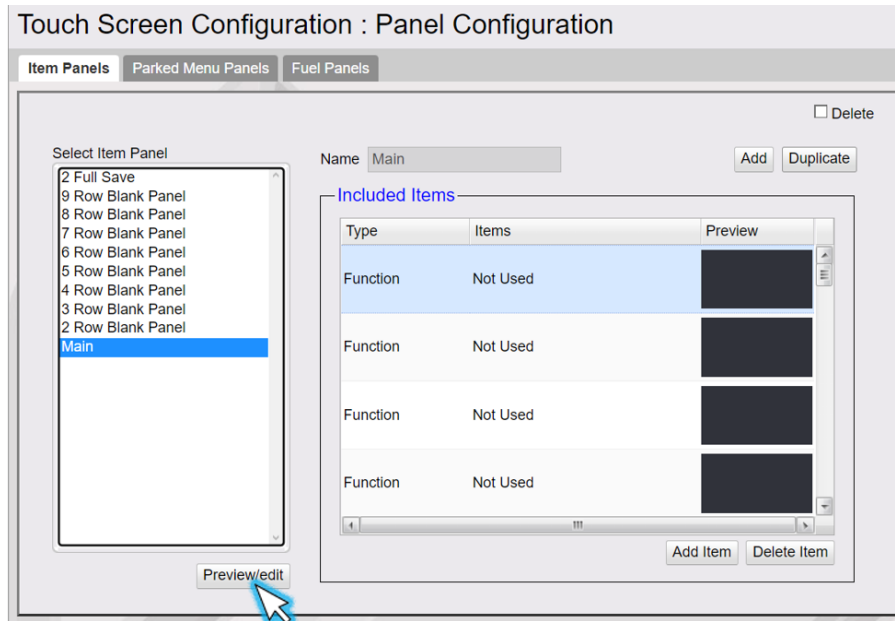
Once the Blank Panel Templates are imported, and you've selected your panel size, duplicate the chosen panel and rename it. Duplicating templates ensures that the Button Panel template remains there for future duplication.

1. Select the panel template you wish to configure and choose Duplicate.
2. Rename the panel and choose Save.

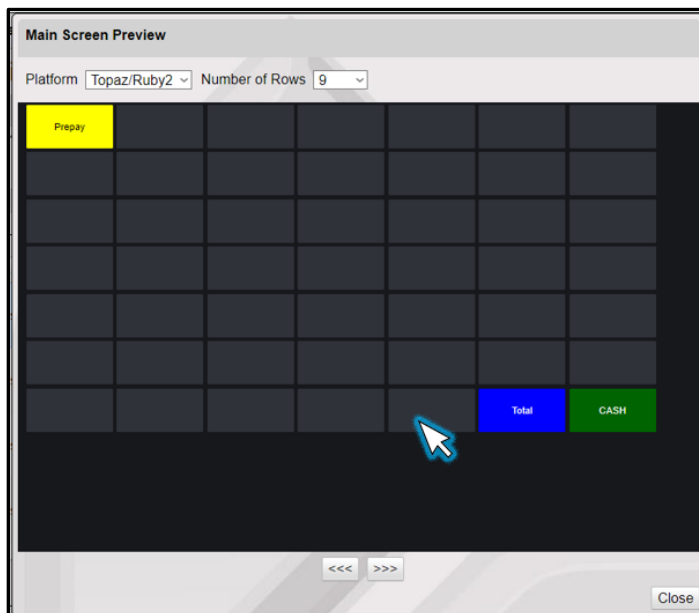


CONFIGURE BUTTONS ON BLANK PANEL

1. Select the screen that was duplicated and click the Preview/Edit button.

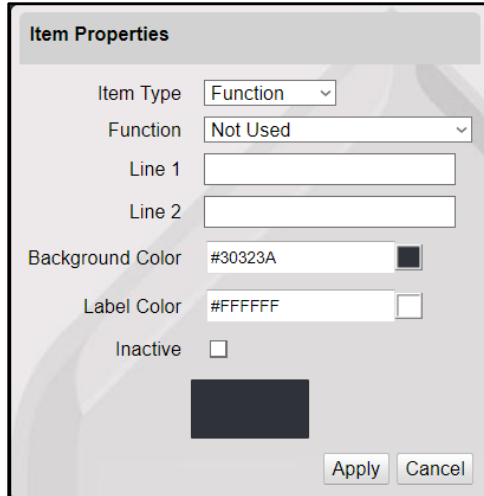


2. Click on the button you wish to edit.



NOTE: Other panels (including fuel) are not represented in the preview edit.

3. Change the Item Type to the desired button type and edit the relevant properties.



The 'Item Properties' dialog box is shown with the following fields and values:

- Item Type: Function (dropdown)
- Function: Not Used (dropdown)
- Line 1: (empty text field)
- Line 2: (empty text field)
- Background Color: #30323A (color picker)
- Label Color: #FFFFFF (color picker)
- Inactive: ☐

At the bottom right are 'Apply' and 'Cancel' buttons. A dark rectangular preview is visible below the 'Inactive' checkbox.

4. Click Close and save when you are finished configuring.

NOTE:

If additional panels are configured on a screen or a panel is resized, buttons that exist on the visible screen may be moved off-screen to compensate for the size adjustment.

OTHER DOCUMENTS

For more information on configuring touch screens, please see the **Base 53 And Higher UI User Reference** at <https://support.verifone.com> under Technical Support > support articles > Petro & Convenience > Commander & RubyCI > Manuals & User Guides > Commander Touch Screen Configuration Base 53 and Higher.