



COMMANDER TOUCH SCREEN CONFIGURATION QUICK REFERENCE





Published: OCTOBER 31, 2017

Verifone, Inc.
Integrated Systems
300 South Park Place Blvd., Suite 100
Clearwater, FL 33759
Office: (727) 953-4000
Fax: (408) 232-7244

Printed in the United States of America
© 2017 Verifone, Inc.
All rights reserved.

No part of this publication may be copied, distributed, stored in a retrieval system, translated into any human or computer language, or transmitted in any form or by any means, without the prior written consent of Verifone, Inc.

The content of this document is subject to change without notice. The information contained herein does not represent a commitment on the part of Verifone, Inc.

Verifone, Inc. is a registered trademark of Verifone, Inc.

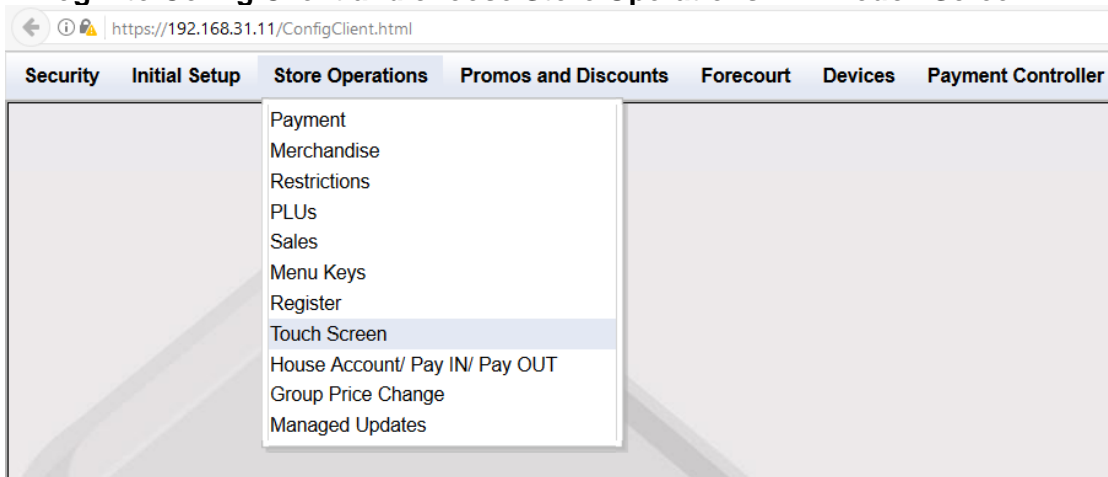
All other brand names and trademarks appearing in this documentation are the property of their respective owners.

Document Revision History

Revision Version	Revision Date	Author	Description
1.0	06/30/2009	Training	Original Document
1.1	09/26/2014	Crystal_F1	Updated to Training Template
1.2	02/27/2015	Crystal_F1	Updated Branding
2.0	10/31/2017	Crystal_P2	Updated pictures and changed wording

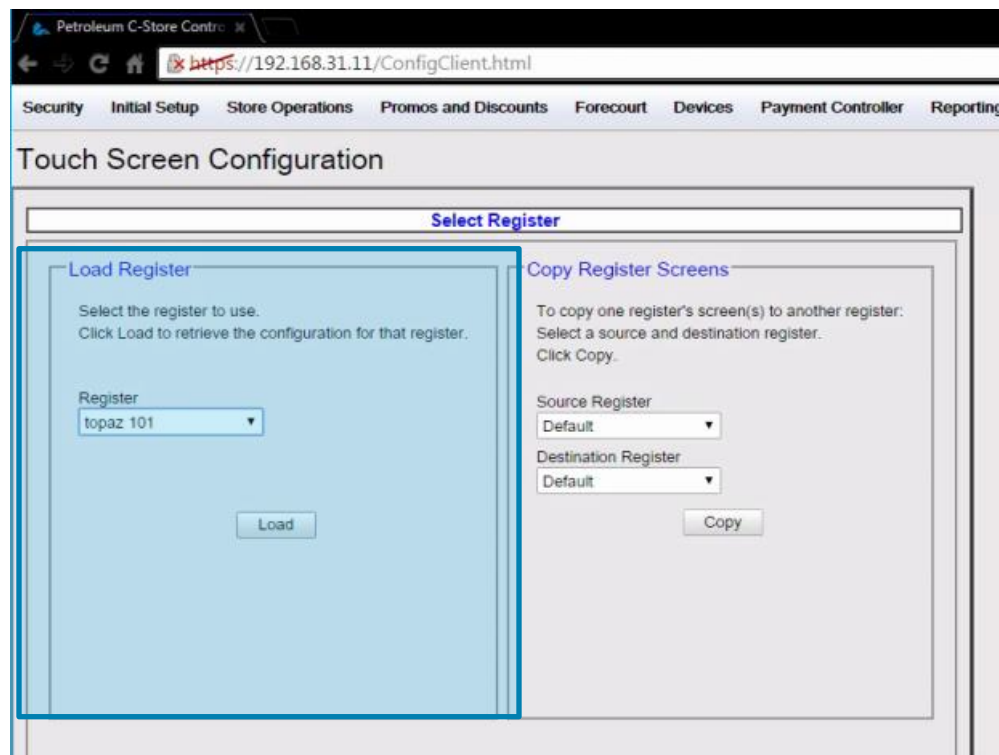
Date of Last Review/Revision: OCTOBER 31, 2017

Step 1. Login to Config Client and choose Store Operations → Touch Screen



Step 2. Select the register you will be editing and click “Load”.

Any additional registers that will have the same configuration can be copied by setting the configured register as the “Source Register” in the Copy Register Screens box and then selecting the register to copy it to under “Destination Register.”



Step 3. Select the screen you wish to configure or edit and click “Load”.

You may also choose to copy (minus fuel) or delete the selected screen or create a New blank screen.

Remember that fuel icons may reside only on the first screen in the screen drop down list.

The screenshot displays the 'Touch Screen Configuration' web interface. At the top right, the title 'Touch Screen Configuration' is shown in blue. Below this, a tab labeled 'Touch Screen Configuration' is active. The main content area is titled 'Select Screen' in blue. It contains the following instructions: 'Select the screen to use and click Load.', 'Click New to create a new screen.', 'Click Delete to delete a screen.', 'Click Copy to copy an existing screen.', and 'Click Back to return to the register selection screen.' Below the instructions is a dropdown menu labeled 'Screen' with 'screen1' selected. At the bottom of the interface, there are five buttons: 'Copy', 'Delete', 'New', 'Load', and 'Back'.

Step 4. The Fuel Panel appears first. To use, first choose where you want the fuel panel to appear on the screen (i.e. Top Row/s, Bottom Row/s, Far Left Column/s, or Far Right Column/s).

Next, choose the number of rows and number of columns used for fuel. The number of rows and columns selected will be based off of the number of fueling positions at the site.

The Fuel Panel can only exist on the first screen and will completely fill the rows it is assigned to.

Zoned fuel Control allows a site to assign specific fueling points to different registers.

Allow One-Touch Approval allows the cashier to touch the fuel icon if it's calling in for approval and so automatically approve the dispenser. If it's de-selected then the cashier needs to press the fueling icon and then select the approve button to approve a dispenser.

Allow One-Touch Claim allows the fuel sale to be brought into the virtual receipt if it's due inside.

Fixed Prepay Buttons allow the cashier to prepay a dispenser by selecting the dispenser and choosing a prepaid amount. These button amounts can be modified in the fuel screen configuration.

Once you've made the appropriate selections or de-selections, choose "Apply" and then "Save."

Fuel Panel | Parked Menu Panel | User Panel | Screen Settings

Panel Dimensions

Number of rows: 2
Number of columns: 7
 Split Columns

Location

Top
 Bottom
 Left
 Right

Item Properties

Fueling Point: (Not Assigned)
Cancel | Apply

To set the fueling point numbers to a default order click Reset.

Reset

Fixed Prepay Buttons

\$10 | \$20 | \$40 | \$50 | \$100

Cancel | Apply

Preview

Row

1	1	2	3	4	5	6	7
2	8						
3							
4							
5							
6							
7							
8							
9							
10							
11							

Click an item to edit.

- Fuel
- Parked Menu
- PLU
- Not Used
- Menu key
- Department
- Function
- MOP

Back

Step 5. (Optional) Parked Menu Panel

Parked Menu Panels can be configured to create a permanent menu that displays the PLUs within the menu on the assigned rows. The Parked Menu Panel can only exist on one screen. The menu keys can be updated by selecting another menu button that is assigned to the screen and is selected as “parked” in the menu configuration.

Default Menu will be the menu that appears on the screen when first logging in.

Menus used in the Parked Menu Configuration must be set up under Manager > Menu Keys

Touch Screen Configuration

Modify Screen - screen1 - (topaz 101)

Fuel Panel **Parked Menu Panel** User Panel Screen Settings

Starting Position

No Panel
 Top
 Bottom

Default Menu

Menu Key Color

Blue

Number of Rows

0

Apply

Preview

Row

1	2	3	4	5	6	7	8
2							
3							
4							
5							
6							
7							
8							
9							
10							
11							

Click an item to edit.

<input type="checkbox"/> Fuel	<input type="checkbox"/> Menu key
<input type="checkbox"/> Parked Menu	<input type="checkbox"/> Department
<input type="checkbox"/> PLU	<input type="checkbox"/> Function
<input type="checkbox"/> Not Used	<input type="checkbox"/> MOP

Back

Step 6. Click User Panel and setup your buttons (keys). To setup Touch Screen keys: (2 methods)

Method 1

- Double click (in the Preview box) the button on the screen you wish to assign
- Drop Down the Key Type and choose the type of key you wish to assign
- Assign the secondary criteria (department name, menu name, plu #, etc)
- Key description will auto-populate in line 1 and line 2 based on the item description. If the user wishes, this may be manually changed to something more specific or appropriate. If the user wishes to change back to the original description, they must choose "Get Text" and the system will pull the original item description back.
- Click "Apply"
- Click "Save"


Touch Screen Configuration

Modify Screen - screen1 - (topaz 101)

Fuel Panel Parked Menu Panel **User Panel** Screen Settings


Key Type
Department ▾

Department
▾

Select Button Color
 Brown
 Inactive

Line 1

Line 2

Key Preview


Preview/Edit Get Text Apply Cancel

Preview

Row

1	2	3	4	5	6	7	8
9	10	11					

Click an item to edit.

Fuel	Menu key
Parked Menu	Department
PLU	Function
Not Used	MOP

Back

Method 2

- Click “Preview/Edit” and an actual preview of the Topaz/Ruby2 touch screen will appear
- Double click the button on the screen you wish to assign
- Drop Down the Key Type menu and choose the type of key you wish to assign
- Assign the secondary criteria (department name, menu name, plu #, etc)
- Key description will auto-populate in line 1 and line 2 based on the item description. If the user wishes, this may be manually changed to something more specific or appropriate. If the user wishes to change back to the original description, they must choose “Get Text” and the system will pull the original item description back.
- Click “Apply”
- Click “Close”
- Click “Save”

Fuel Panel

Not Used	Not Used	Not Used	Not Used	Not Used	Not Used	Not Used
Snacks	Not Used	Potato Chips	Not Used	Cola	Not Used	Drinks
Drinks	Not Used	Tortilla Chips	Not Used	Diet	Not Used	Snacks Menu
Not Used	Not Used	Cheese Curls	Not Used	Cherry	Not Used	Not Used
Not Used	Not Used	Not Used	Not Used	Not Used	Not Used	Not Used
Not Used	Not Used	Not Used	Not Used	Not Used	Not Used	Not Used
Not Used	Not Used	Not Used	Not Used	Not Used	Not Used	Not Used
Not Used	Not Used	Not Used	Not Used	Not Used	Not Used	Not Used
Not Used	Not Used	Not Used	Not Used	Not Used	Not Used	Not Used
Not Used	Not Used	Not Used	Not Used	Not Used	Not Used	Not Used

Key Type
Department ▾
Department
[Dropdown]
Select Button Color
Brown
Line 1 [Text Box] Line 2 [Text Box]
 Inactive
GetText Apply Close

Step 7. Click on the Screen Settings tab. In this tab: (remember to APPLY and SAVE)

- Rename your screen
- Put the virtual receipt on the right or left side of the screen. Remember to log out and then back in to the Topaz/Ruby2 after applying and saving. (Reboot is only required if logging out and back in does not result in syncing.)
- Choose the size and color of your Topaz/Ruby2 Expanded Menu

Touch Screen Configuration

Modify Screen - screen1 - (topaz 101)

Fuel Panel Parked Menu Panel User Panel **Screen Settings**

Screen Name
screen1

Expanded Menu Size

Single
 Double Wide
 Double High
 Quadruple

Default Screen Orientation

Left
 Right

Preview

Back

To update the registers with the new screen configuration, log out of sales mode and back in to get the update.

To copy configurations from one screen to the next, go to the first screen for Touchscreen Configuration and select “Copy Registers” on the right hand side. Copy from a register that is already configured (Source) to the register that does not yet have the configuration (Destination).