

Fleet Cards Retail

Feature Reference

Date: August 16, 2021



Verifone[®]

Revision History

Date	Description
09/08/2021	Initial Release
12/08/2021	Fixed review comments.

Verifone, Inc.
2560 N, 1st St., Suite 220
San Jose, CA 95131
Telephone: 408-232-7800
<http://www.verifone.com>

© 2021 Verifone, Inc. All rights reserved.

No part of this publication covered by the copyrights hereon may be reproduced or copied in any form or by any means - graphic, electronic, or mechanical, including photocopying, taping, or information storage and retrieval systems - without written permission of the publisher.

The content of this document is subject to change without notice. The information contained herein does not represent a commitment on the part of Verifone. All features and specifications are subject to change without notice.

Verifone, Ruby SuperSystem, and Secure PumpPAY are registered trademarks of Verifone, Inc. Ruby Card, iOrder, and Commander Site Controller are trademarks of Verifone. All other brand names and trademarks mentioned in this document are the properties of their respective holders.

CONTENTS

- 1. Overview 1**
 - Feature Description. 1
 - Supported Hardware Requirements 1
 - Base 53 and Higher UI 1
 - Note. 1

- 2. Configuring Fleet Cards 2**
 - Assigning CommFleet Prepay functions to Soft Key 2

- 3. Using Fleet Cards 4**
 - Commercial Fleet Prepay Fuel Transaction 4
 - Pre-authorization. 4
 - Completing the transaction 4

- 4. Appendix. 5**
 - PDL & DCT Download. 5
 - PDL Download 5
 - DCT Download. 8
 - Configuring User Interface Using Config Client12
 - Panel Configuration12
 - Screen Configuration19
 - Register Configuration23

1 OVERVIEW

Feature Description

The Commercial Fleet transaction initiates a prepay transaction that does not require an amount entry.

Supported Hardware Requirements

- Commander Site Controller with Topaz/Ruby2/C18
- Commander Site Controller base version 53.13 and higher
- RubyCi with Topaz/Ruby2/C18
- Payment PIN pad(s)

Base 53 and Higher UI

The User Interface has changed for base 53 and higher. As a result, after an auto upgrade a few elements on the UI would appear out of place. To fix this refer to “Configuring User Interface Using Config Client” on page 12.

“Items can be moved in the panel by selecting the item and dragging and dropping to the desired position” on page 14

“Select a panel and click Move Up or Move Down to move the panel.” on page 22

Note

Parameter Download (PDL) and Dynamic Card Table (DCT) downloads are done from the POS after installing the feature for the first time.

PDL is a general Table Download to enable cards and DCT is a Card Table Download to let the system know how to process the transactions with the cards.

View “PDL & DCT Download” on page 5.

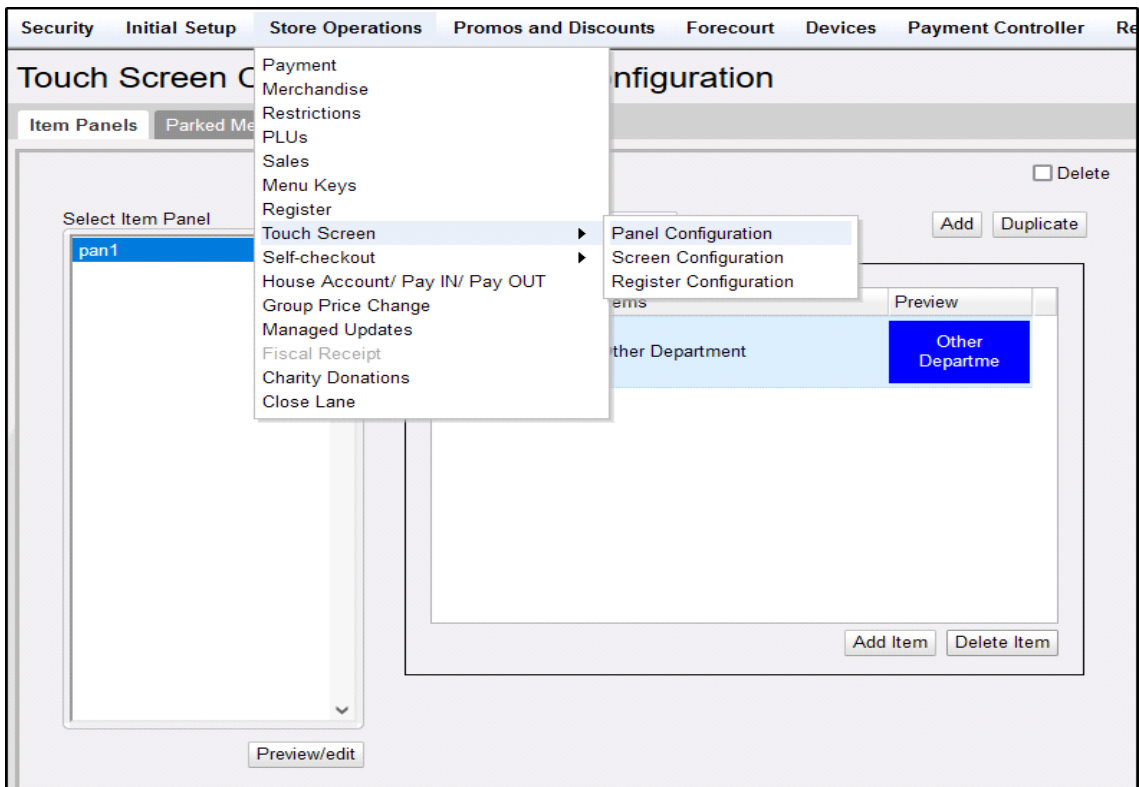
2 CONFIGURING FLEET CARDS

Assigning CommFleet Prepay functions to Soft Key

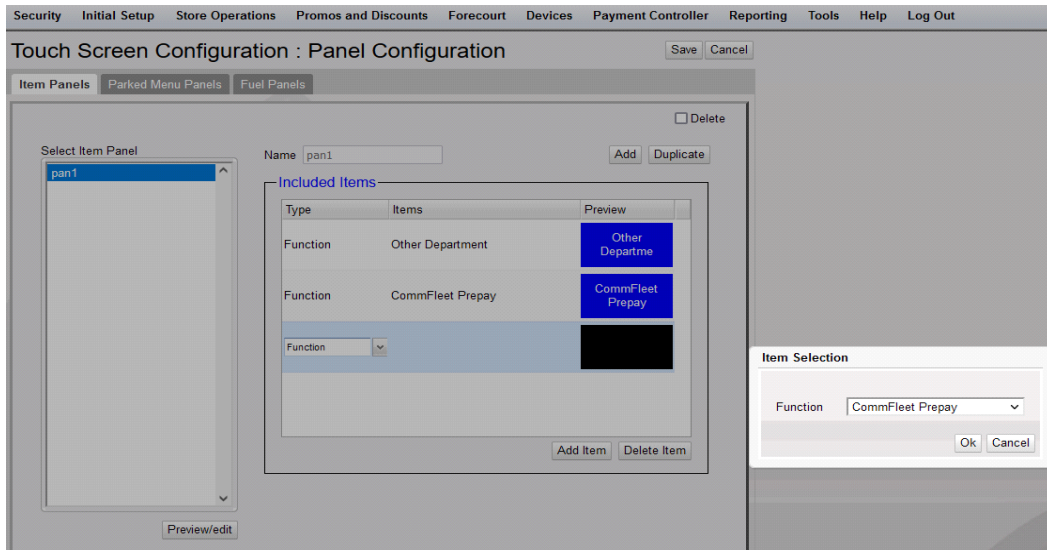
For retail pumps, the only way to trigger a commercial fleet prepay transaction is by assigning a soft key to the CommFleet Prepay function and using the soft key for the transaction.

Go to **Configuration Client > Store Operations > Touch Screen > Panel Configuration** tab to assign soft keys to the functions.

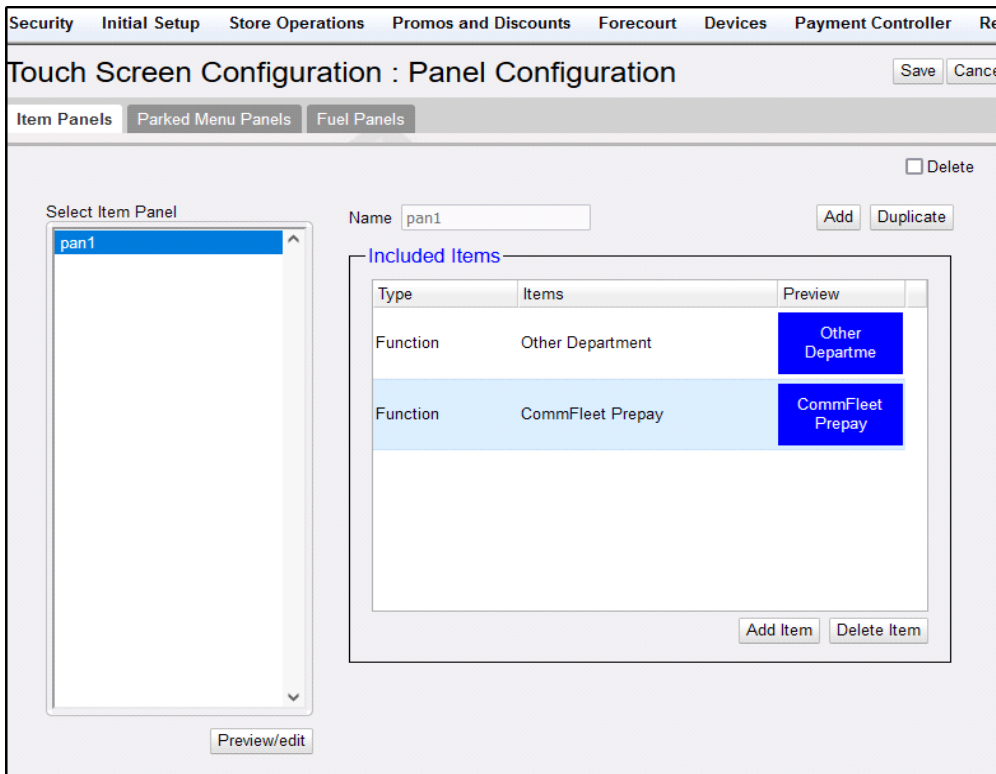
1. Go to the Item Panel of the screen you want to add the button.



2. Click **Add Item**.
3. Choose **Type** as **Function**.
4. Choose the function **CommFleet Prepay**.




5. Click OK.



6. Click Save.

7. Logout and login on the POS.

 Refer to "Configuring User Interface Using Config Client" on page 12 to know more about how to configure the User Interface.

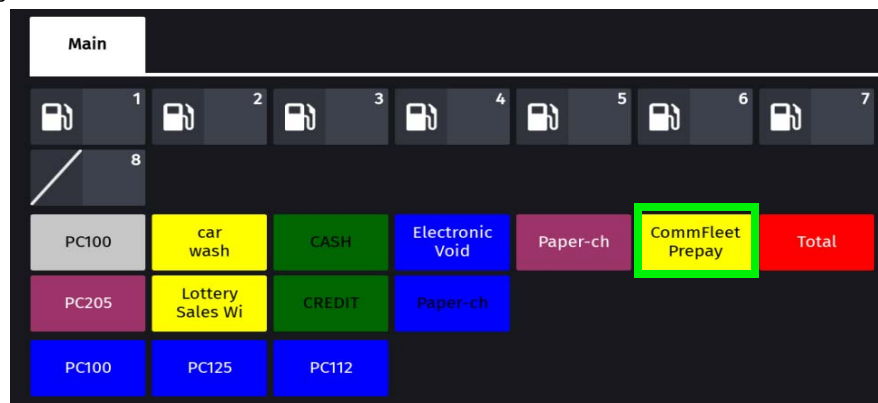
3 USING FLEET CARDS

Commercial Fleet Prepay Fuel Transaction

Pre-authorization

Commercial fleet prepay transactions differ from the normal prepay transactions as the commercial fleet prepay transactions are zero dollar transactions and selection of grade is compulsory before pre-authorization.

1. Trigger Commercial Fleet Prepay transactions by using the Comm Fleet Prepay soft key.



2. Select the pump and grade to be fueled and click **Confirm**.
3. Follow cashier instructions for preauthorization.

Completing the transaction

If there are no additional products to be added to the transaction, sale is completed at the DCR.

If there are additional products to be added to the transaction, fuel sale will come due inside and cashier can select pump to complete the sale after adding the additional products.

4

APPENDIX

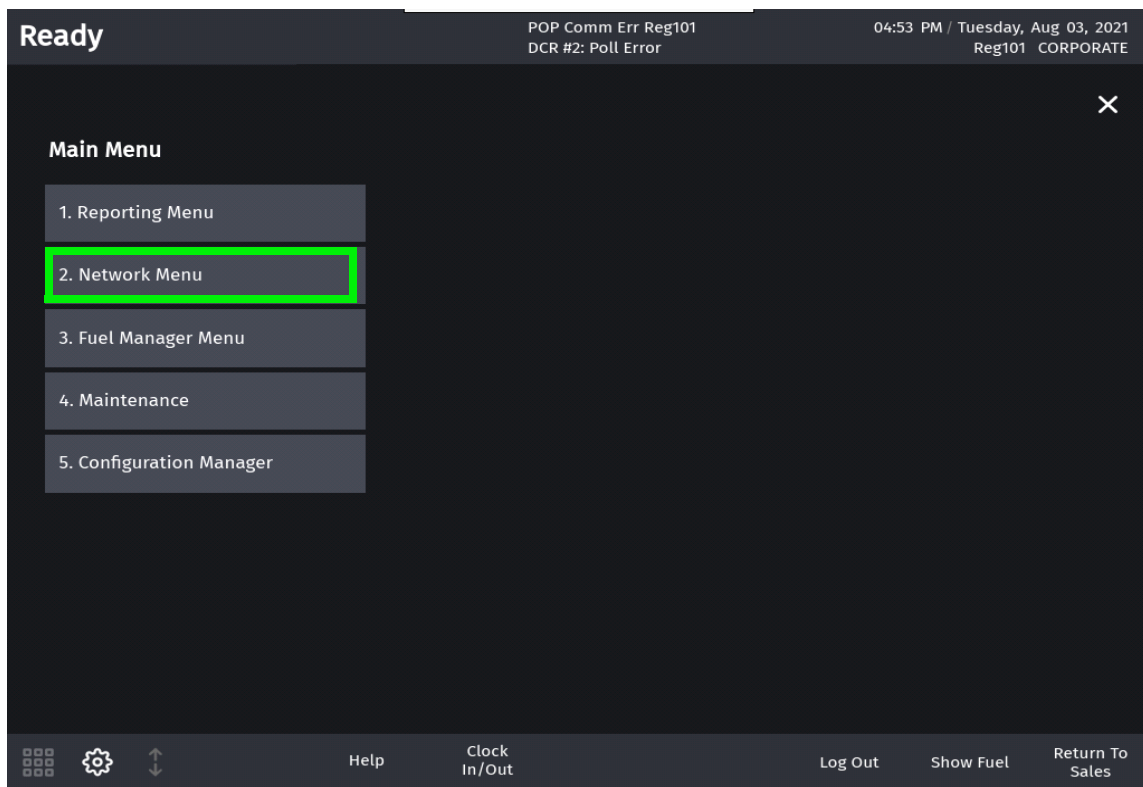
PDL & DCT Download

The following configurations are done from the POS after installing the feature for the first time.

PDL Download

Perform a PDL Download to download cards tables and enable card types.

1. On POS select Network Menu from CSR Functions.



2. Select EPS Network Functions from Network Menu.

The screenshot shows a dark-themed application interface. At the top left, the word "Ready" is displayed. At the top center, the text "POP Comm Err Reg101" and "DCR #2: Poll Error" is visible. At the top right, the date and time "04:56 PM / Tuesday, Aug 03, 2021" and "Reg101 CORPORATE" are shown. A close button (X) is in the top right corner of the menu area. The main content is titled "Network Menu" and contains a list of 13 numbered items arranged in two columns. The item "3. EPS Network Functions" is highlighted with a green rectangular border. The bottom of the screen features a navigation bar with icons for a grid, a gear, and a vertical double-headed arrow, along with the text "Help", "Clock In/Out", "Show Fuel", and "Previous Menu".

Ready

POP Comm Err Reg101
DCR #2: Poll Error

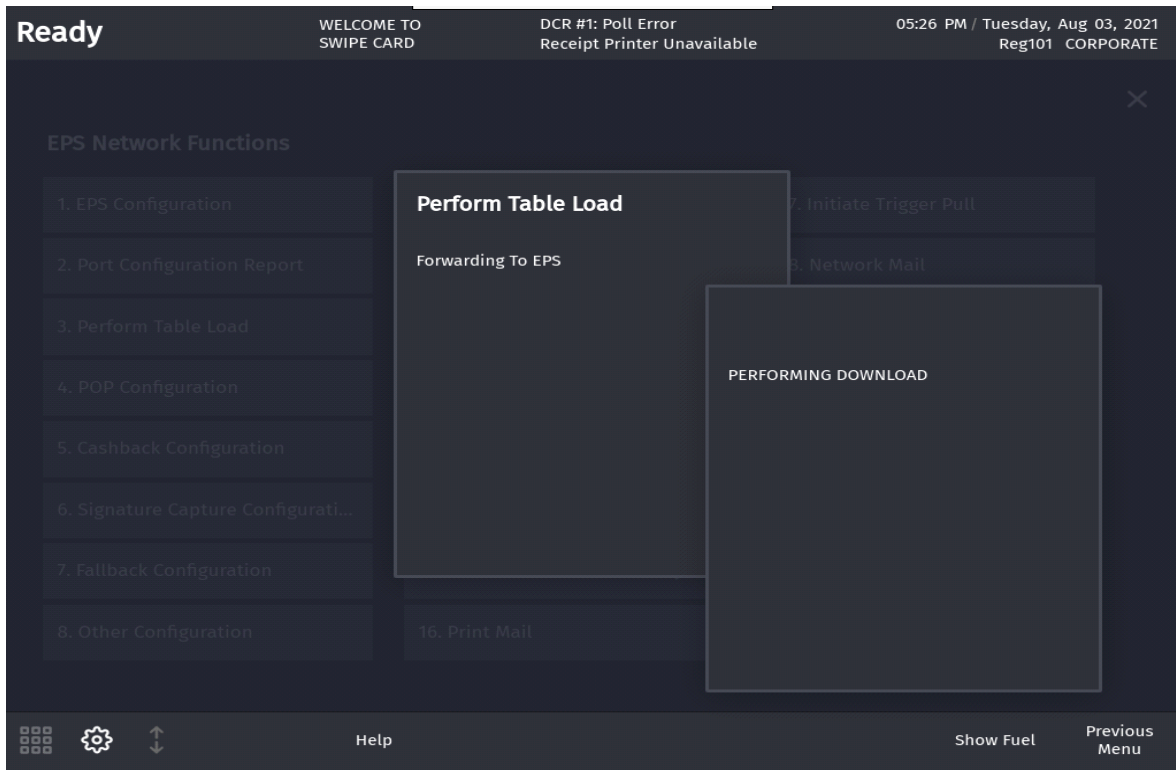
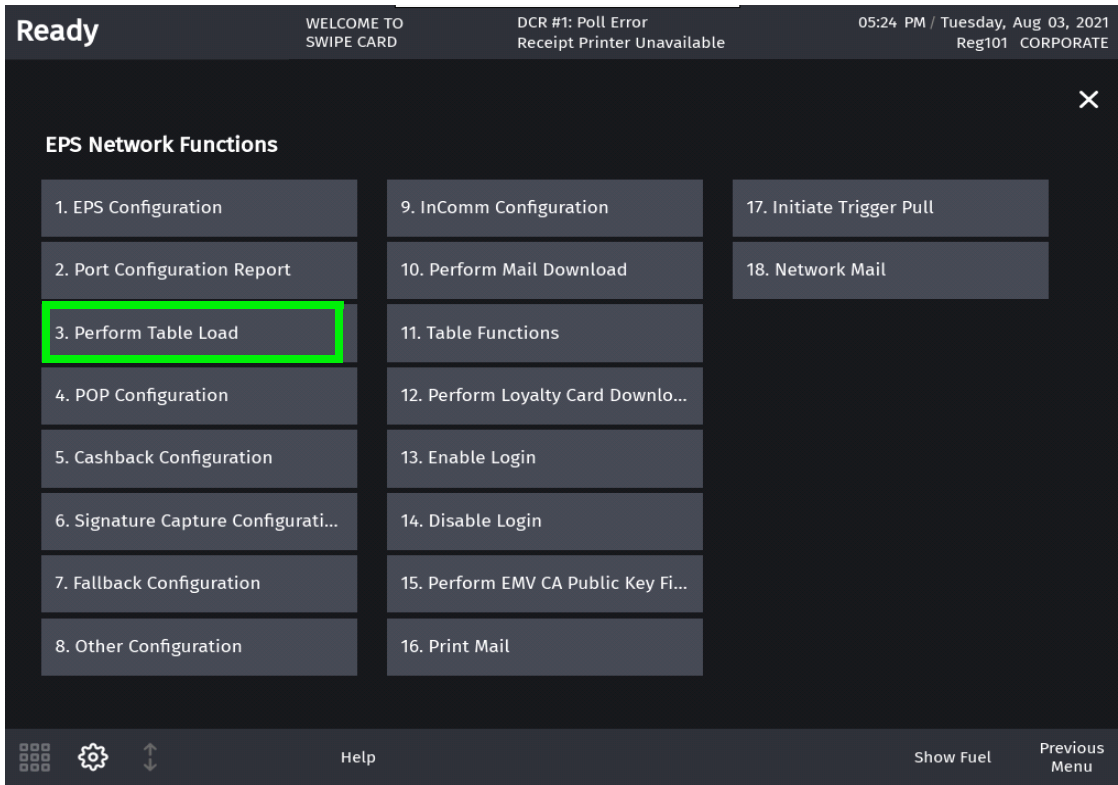
04:56 PM / Tuesday, Aug 03, 2021
Reg101 CORPORATE

Network Menu

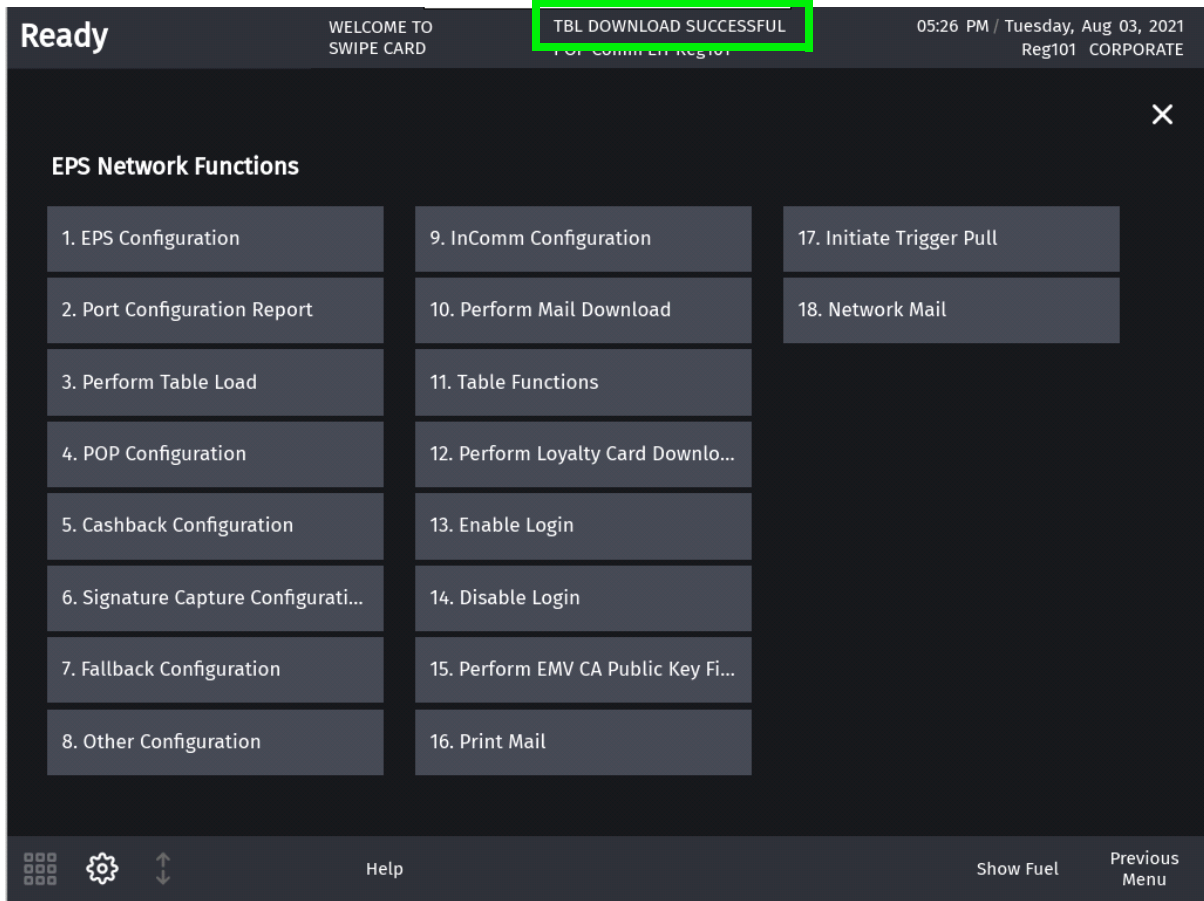
- 1. Pre-Authorization
- 2. Card Balance Inquiry
- 3. EPS Network Functions
- 4. EPS Network Reports
- 5. EPS Secure Reports
- 6. Dealer Configuration
- 8. Diagnostic Check Host Status
- 9. Diagnostic Pop Init
- 10. Send Offline Transactions
- 11. EPS Network Manager Functi...
- 12. EBT VOUCHER CLEAR
- 13. MOBILE REPORTS

Help Clock In/Out Show Fuel Previous Menu

3. Select Perform Table Load from EPS Network Functions Menu.



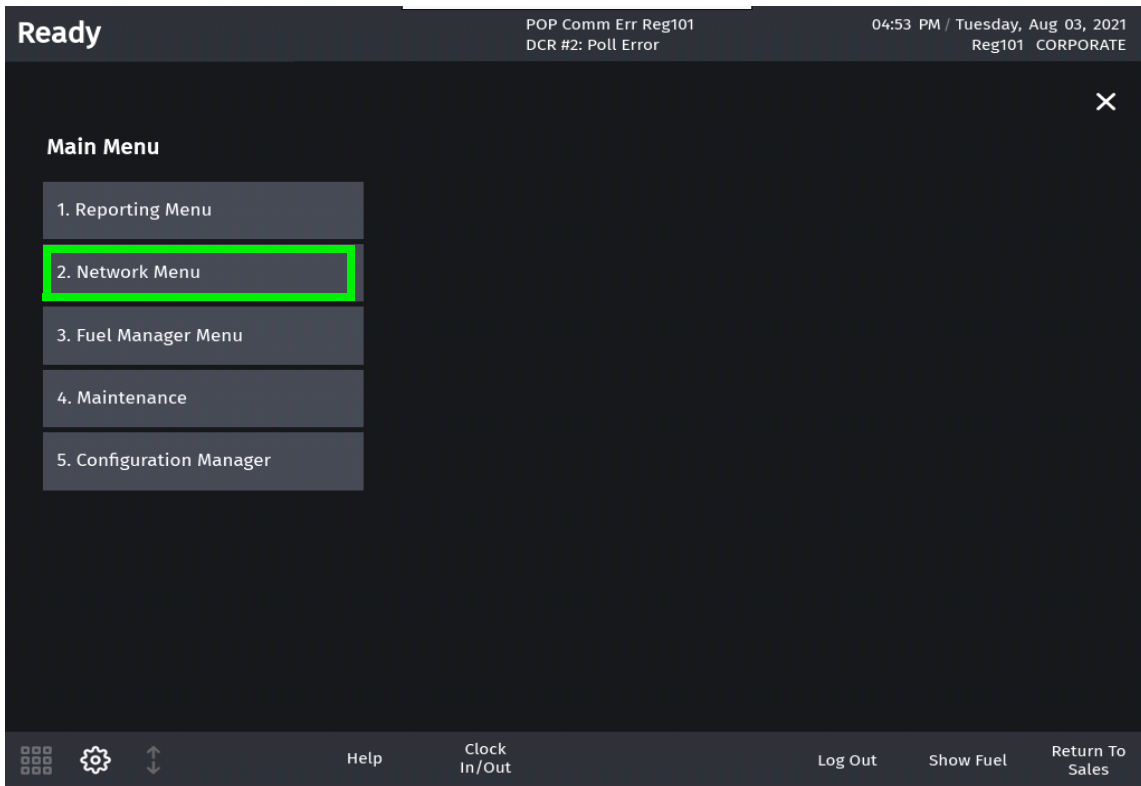
4. After a successful download, "TBL Download Successful" message appears on the register info area of the screen.



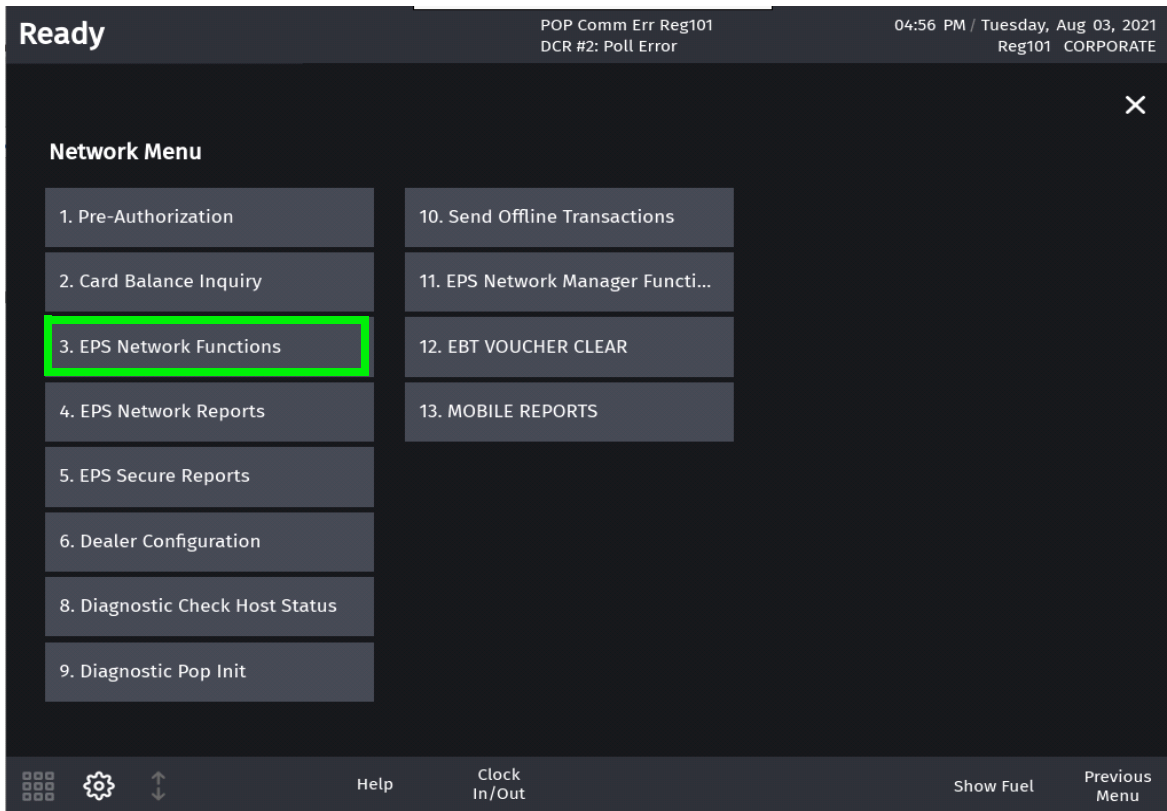
DCT Download

Perform a DCT download to download card tables that provide more information on the dynamic prompts while using fleet/commercial cards.

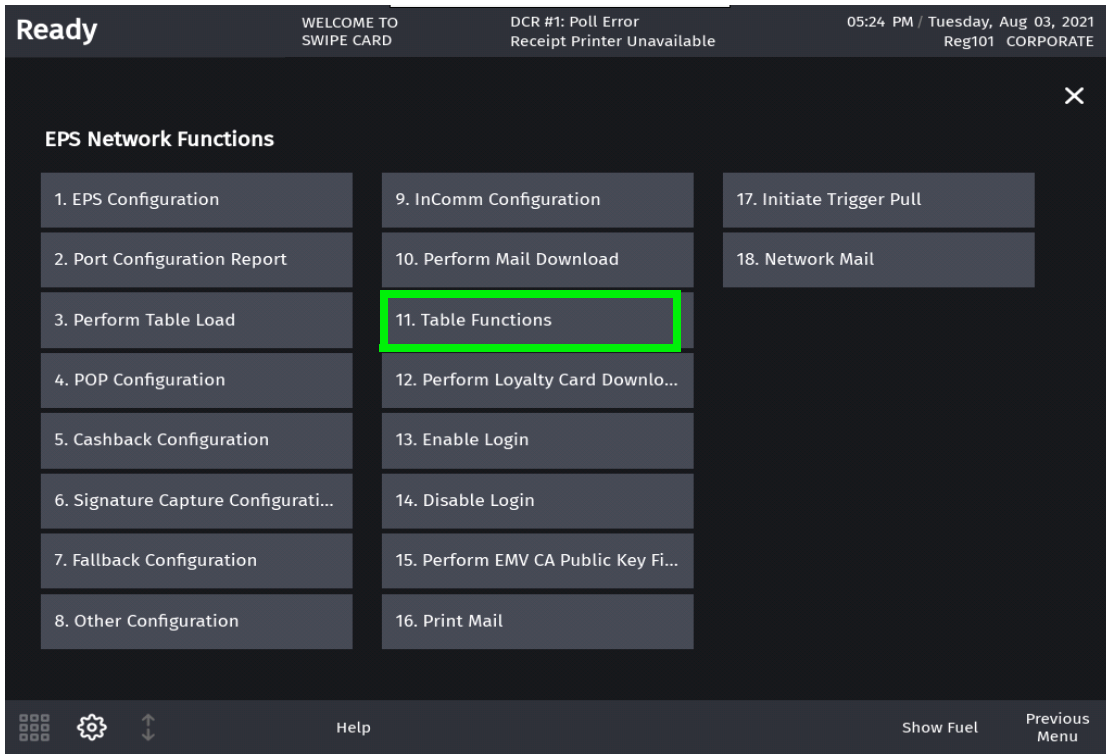
1. On POS select Network Menu from CSR Functions.



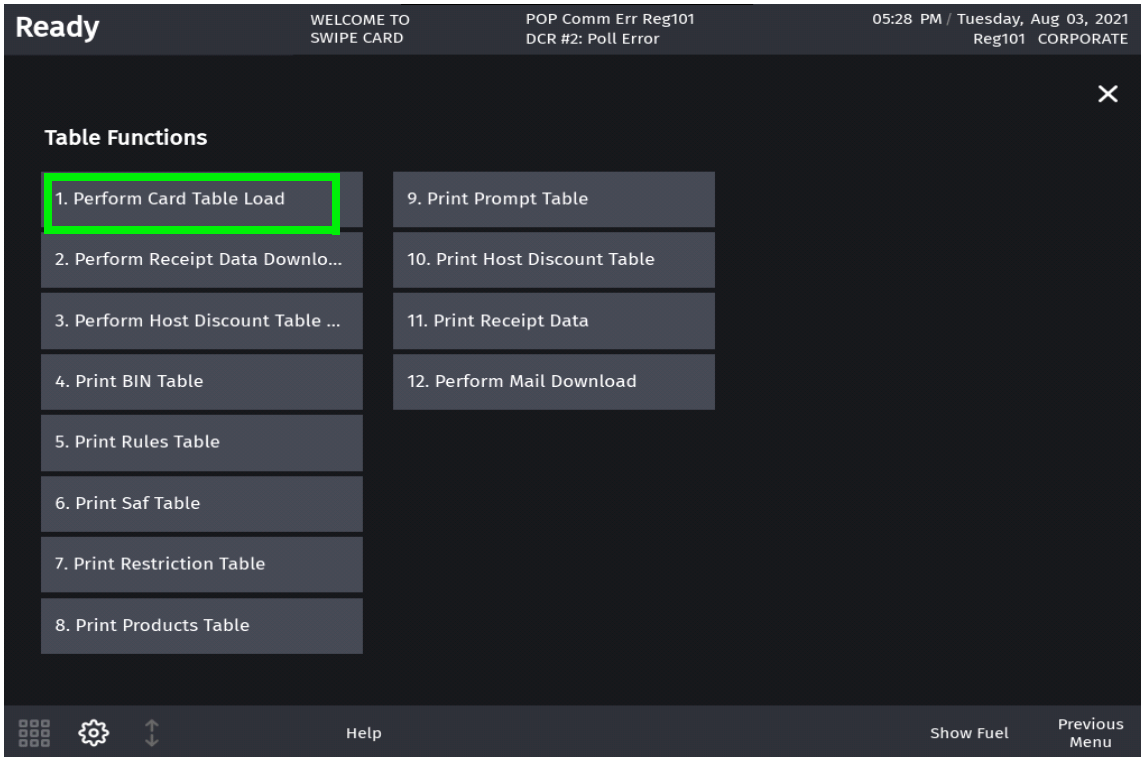
2. Select EPS Network Functions from Network Menu.

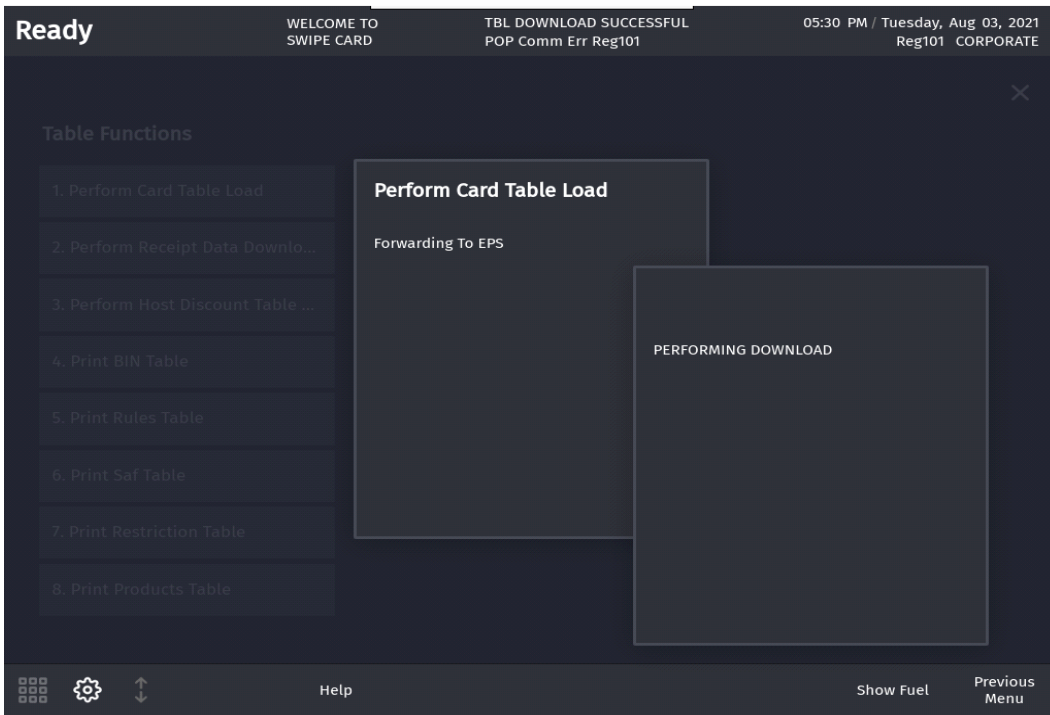


3. Select Table Functions from EPS Network Functions Menu.

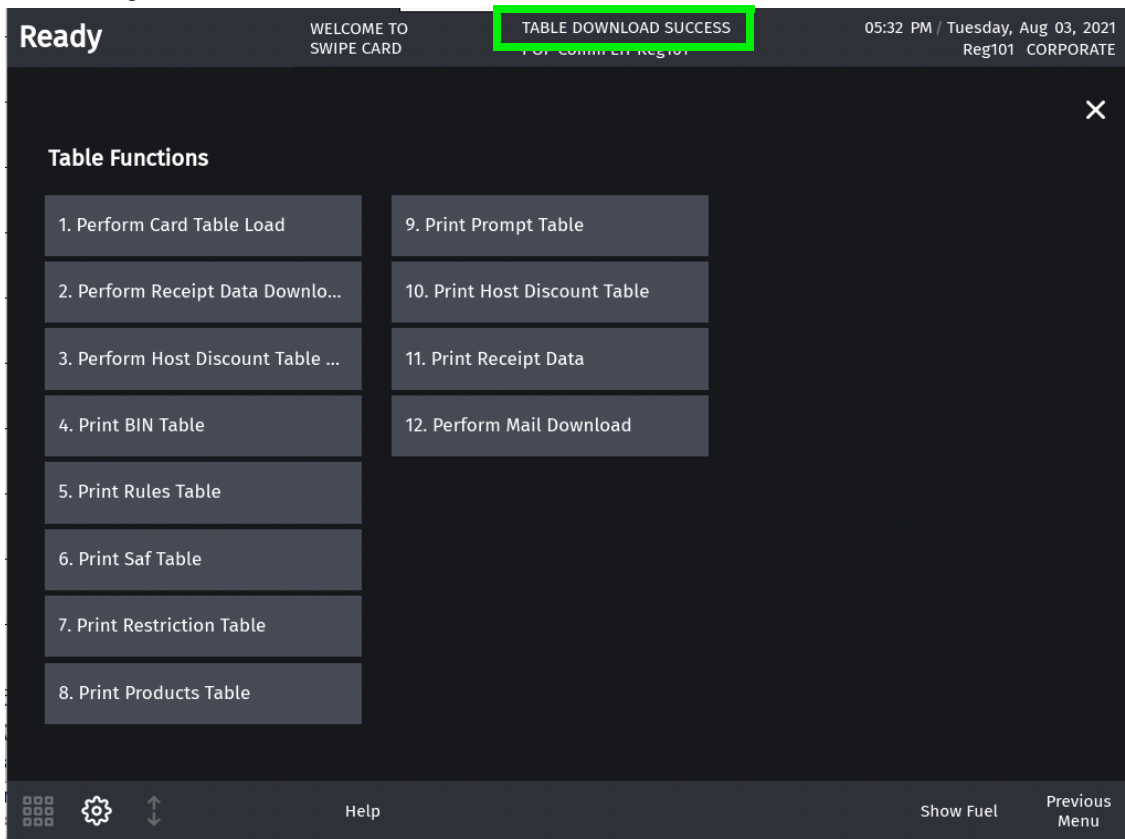


4. Select Perform Card Table Load from Table Functions Menu.





5. After a successful download, "Table Download Success" message appears on the register info area of the screen.



Configuring User Interface Using Config Client

How to configure buttons on the touch screen has changed. Instead of only having screens with buttons, the user can now configure panels within screens, and have as many item buttons as they want on the panels. The user can swipe to access the ones not displayed on screen.



Refer to Base 53 and Higher User Interface User Reference for more information on the new User Interface.

The touch screen configuration is divided into three parts:

- Panel Configuration
- Screen Configuration
- Register Configuration

Register: Each Register/POS can be configured to have one or more screens.

Screens - Each screen has a name and can be configured to have up to three panels. All screens appear as tabs on the register.

User Panel: The area within a screen with these panels is collectively referred to as User Panel.

Panel Configuration

Go to **Store Operations > Touch Screen > Panel Configuration** to configure panels and to configure items assigned to panels.

Panels are of the following types:

- Item Panel
- Parked Menu Panel
- Fuel Panel

A screen can have multiple item panels. A screen can have only one fuel panel and one parked menu panel. Also, only one fuel panel and parked menu panel can be assigned to a POS register; but, these fuel panel and parked menu panels can be included in multiple screens on the register.

Item Panels

Use Item Panels form to configure panels that have PLU, Department, MOP, Function or Menu Key items.

Touch Screen Configuration : Panel Configuration

Item Panels | Parked Menu Panels | Fuel Panels

Delete

Select Item Panel

- OrderMenu
- Beverages
- Snacks
- Grocery
- Discounts
- Fees
- Functions**

Name: Functions

Add Duplicate

Included Items

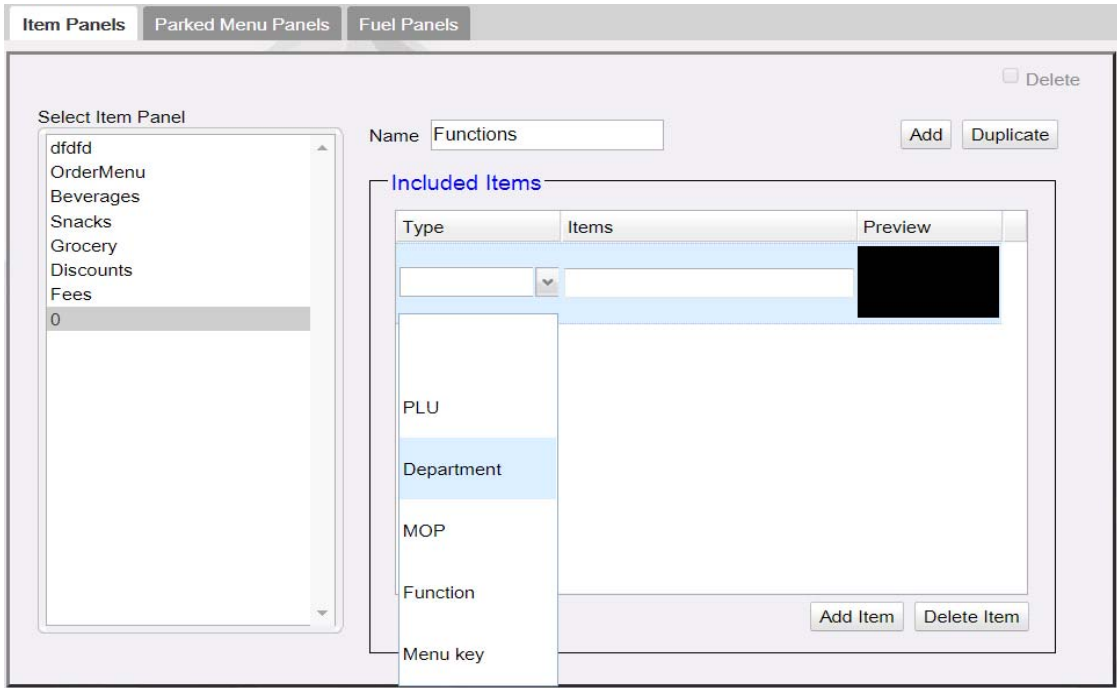
Type	Items	Preview
Function	Approve Fuel	Approve Fuel
Function	Fuel Preset	Fuel Preset
Function	Not Used	
Function	Gift Card Activate	Gift Card Act

Preview/edit

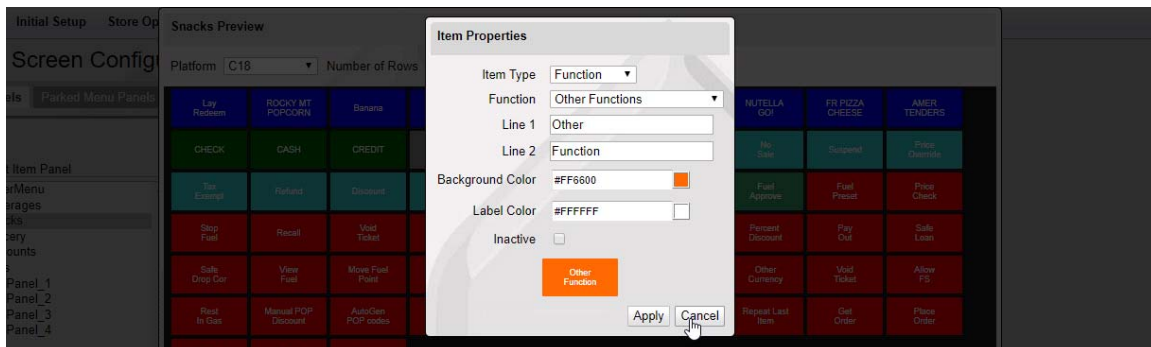
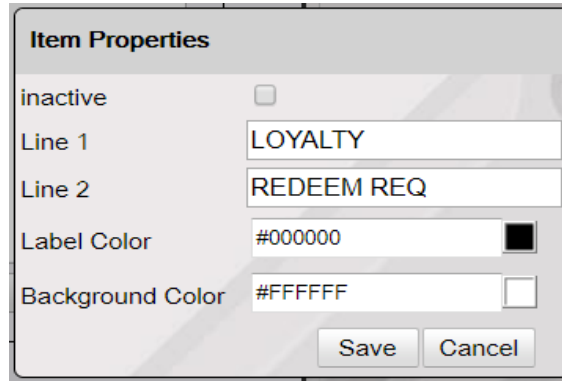
Add Item Delete Item

1. Click **Add**.
2. Enter Name of the Item Panel.
3. Click **Add Item**.

- Click Type and select the type of item from PLU, Department, MOP, Function or Menu Key and add the item.



- Click **Preview** to change item properties like line1, line2, background color and label color.



- Items can be moved in the panel by selecting the item and dragging and dropping to the desired position

- Click **Save**.
- Click on Preview/edit button to view the item panel on the POS screen for the selected item panel.

Touch Screen Configuration : Panel Configuration

Select Item Panel

- OrderMenu
- Beverages
- Snacks
- Grocery
- Discounts
- Fees
- ItemPanel_1
- ItemPanel_2
- ItemPanel_3
- ItemPanel_4

Name: OrderMenu

Buttons: Add, Duplicate, Delete

Type	Items	Preview
Menu key	1-MENU-RULE	Ruby Menu 1
Menu key	ICE COFFEE	Ruby Menu 2
Menu key	FOUNTAIN	Tea
Menu key	FRUIT	Ruby Menu 4

Buttons: Add Item, Delete Item

Preview/edit

Item Panel Preview for Topaz/Ruby2 POS

Security Initial Setup Store Operations Promos

Touch Screen Configuration : Pa

Item Panels Parked Menu Panels Fuel Panels

Select Item Panel

- OrderMenu
- Beverages
- Snacks
- Grocery
- Discounts
- Fees
- ItemPanel_1
- ItemPanel_2
- ItemPanel_3
- ItemPanel_4

Name: Snacks

Platform: Topaz/Ruby2 Number of Rows: 9

Lay Redeem	ROCKY MT POPOORN	Banana	Jerky	YOGURT RAISINS	TIC TAC BIG PK	Reeses P B Cup
NUTELLA GOI	FR PIZZA CHEESE	AMER TENDERS	CHECK	CASH	CREDIT	Total
Fuel Prepay	Modify	Quantity	No Sale	Suspend	Price Override	Tax Exempt
Refund	Discount	Safe Drop	Other Function	Flash Report	Fuel	Fuel Approve
Fuel Preset	Price Check	Stop Fuel	Recall	Void Ticket	Other MOP	Pay In
Clock In/Out	Other Dept	Percent Discount	Pay Out	Safe Loan	Safe Drop Cor	View Fuel
Move Fuel Point	Other Fuel Functions	Percent Discount	Amount Discount	Fuel Disc	Other Currency	Void Ticket
Allow FS	Rest In Gas	Manual POP Discount	Auto/Gen POP codes	Fuel Tax Exempt	Fuel Tax Add	POP Number Card
Next Dollar Amount	Repeat Last Item	Get Order	Place Order	Choose Prepaid	Fuel Discount	Convert Fuel MOP

Buttons: <<< >>> Close

Item Panel Preview for C18 POS With Utility Panel

Security Initial Setup Store Operations Promos

Touch Screen Configuration : Platform **C18** Number of Rows **9** Utility Panel

Item Panels Parked Menu Panels Fuel Panels

Select Item Panel

- OrderMenu
- Beverages
- Snacks
- Grocery
- Discounts
- Fees
- ItemPanel_1
- ItemPanel_2
- ItemPanel_3
- ItemPanel_4

Name **Snack**

Included

Type

PLU

PLU

PLU

PLU

Preview/edit

Close

Status: Connected Site: CL120 IP: 192.168.31.11 manager: Signed in since 03:39 AM Copyright © 2020 VeriFone Inc.

Item Panel Preview for C18 Without Utility Panel

Security Initial Setup Store Op

Touch Screen Config Platform **C18** Number of Rows **9** Utility Panel

Item Panels Parked Menu Panels

Select Item Panel

- OrderMenu
- Beverages
- Snacks
- Grocery
- Discounts
- Fees
- ItemPanel_1
- ItemPanel_2
- ItemPanel_3
- ItemPanel_4

Name **Snack**

Included

Type

PLU

PLU

PLU

PLU

Preview/ed

Close

Status: Connected Site: CL120 IP: 192.168.31.11 manager: Signed in since 03:39 AM Copyright © 2020 VeriFone Inc.



Select an Item panel and click Duplicate to create a duplicate item panel from the existing item panels.

Touch Screen Configuration : Panel Configuration

Item Panels | **Parked Menu Panels** | Fuel Panels

Delete

Select Item Panel

- OrderMenu
- Beverages
- Snacks
- Grocery
- Discounts
- Fees
- ItemPanel_1
- ItemPanel_2
- ItemPanel_3
- ItemPanel_4

Name: OrderMenu

Included Items

Type	Items	Preview
Menu key	1-MENU-RULE	Ruby Menu 1
Menu key	ICE COFFEE	Ruby Menu 2
Menu key	FOUNTAIN	Tea
Menu key	FRUIT	Ruby Menu 4

Duplicate Panel

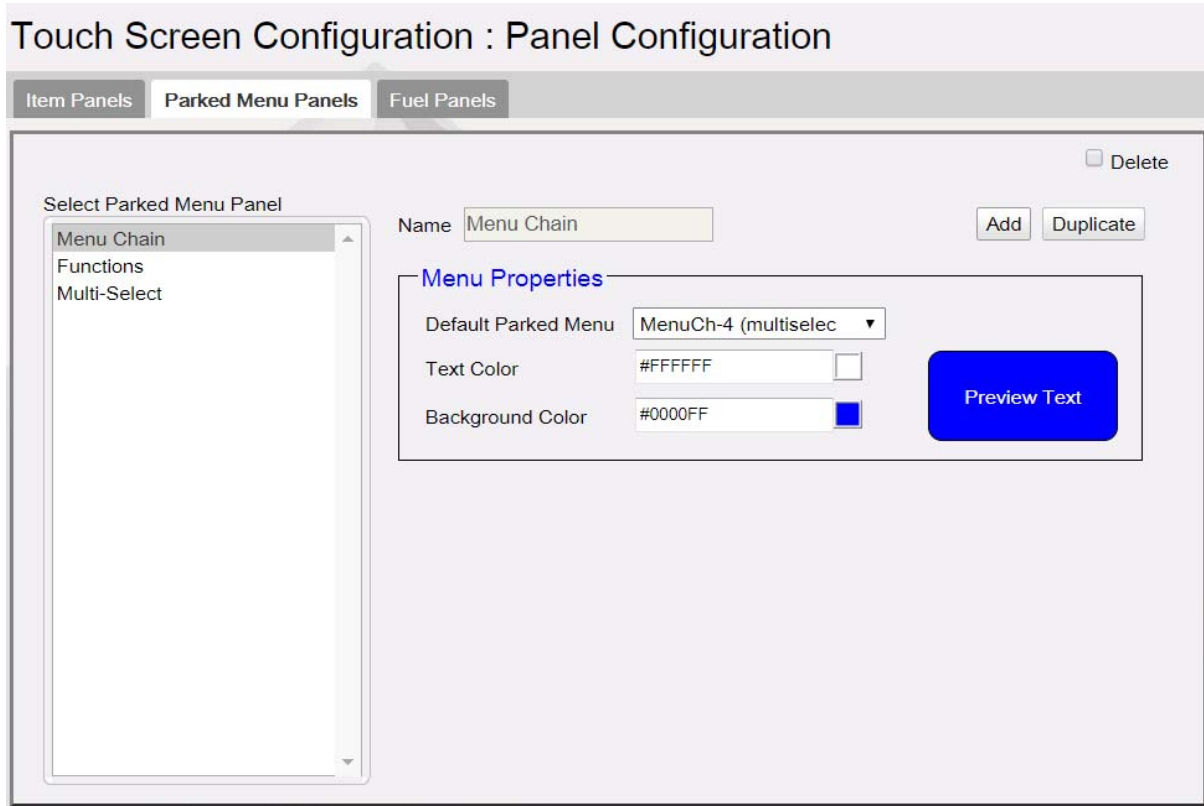
Choose a Item Panel to duplicate: OrderMenu

New Item Panel name:

Parked Menu Panels

Use Parked Menu Panels form to configure Parked Menu. This feature displays each menu item on individual buttons of the parked menu panel so that a single touch adds

the item to the transaction. Refer to the **Menus** chapter in Commander Site Controller User Reference to see how different types of menus are configured.



1. Click **Add**.
2. Enter a name for the Parked Menu panel.
3. In Menu Properties, select a Default Parked Menu. Refer to the **Menus** chapter in Commander Site Controller User Reference to see how menus are configured.
4. Select the text color and the background color for the items in the panel.
5. Click **Save**.



Select a Parked Menu Panel and click Duplicate to create a duplicate parked menu panel from the existing parked menu panels.

Fuel Panels

Use Fuel Panels form to configure fuel keys for the POS touch screen.

The screenshot shows the 'Fuel Panels' configuration interface. It includes a 'Select Fuel Panel' list on the left, a 'Name' field with 'FP1', and 'Add' and 'Duplicate' buttons. The 'Properties' section contains 'Starting Fuel Point' (1) and 'Number Of Fuel Points' (16). The 'Fuel Point Assignments' section features a 'Reset' button and a grid of 16 fuel point icons numbered 1 through 16.

1. Click **Add**.
2. Enter a name for the Fuel Panel.
3. In Properties, specify the ID of the beginning fueling position and the number of fueling positions to be included in the fuel panel.
4. Click **Save**.



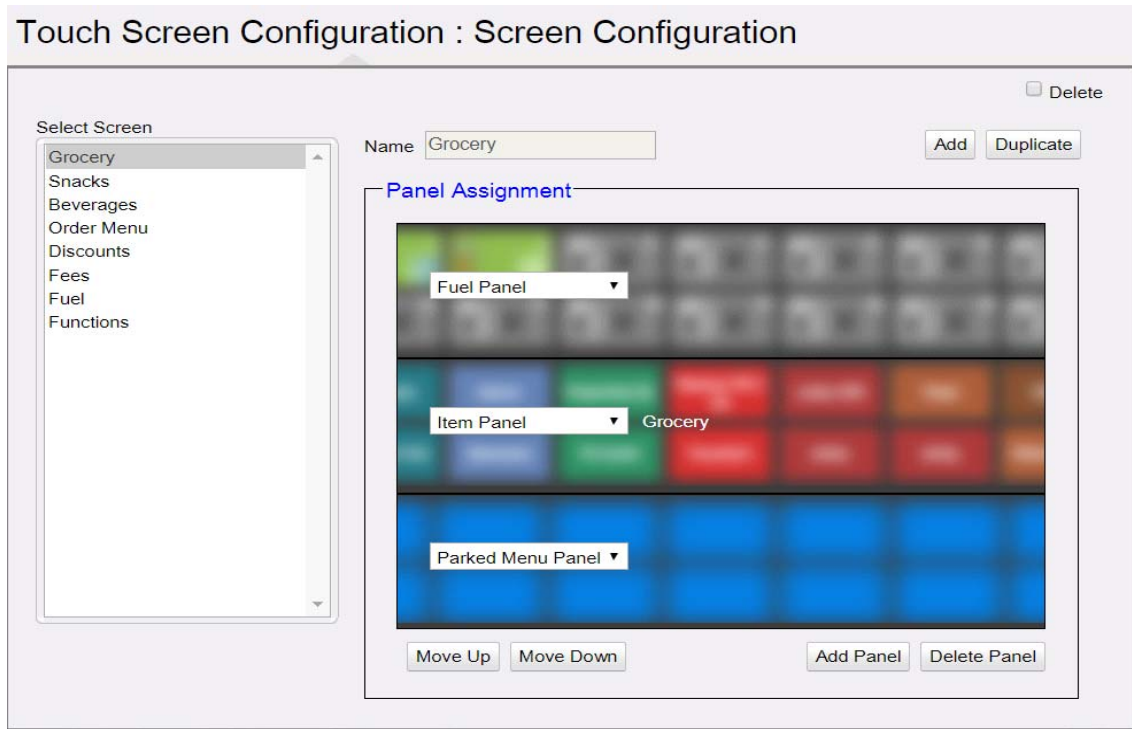
Select a Fuel panel and click Duplicate to create a duplicate Fuel Panel from the existing Fuel Panels.

Screen Configuration

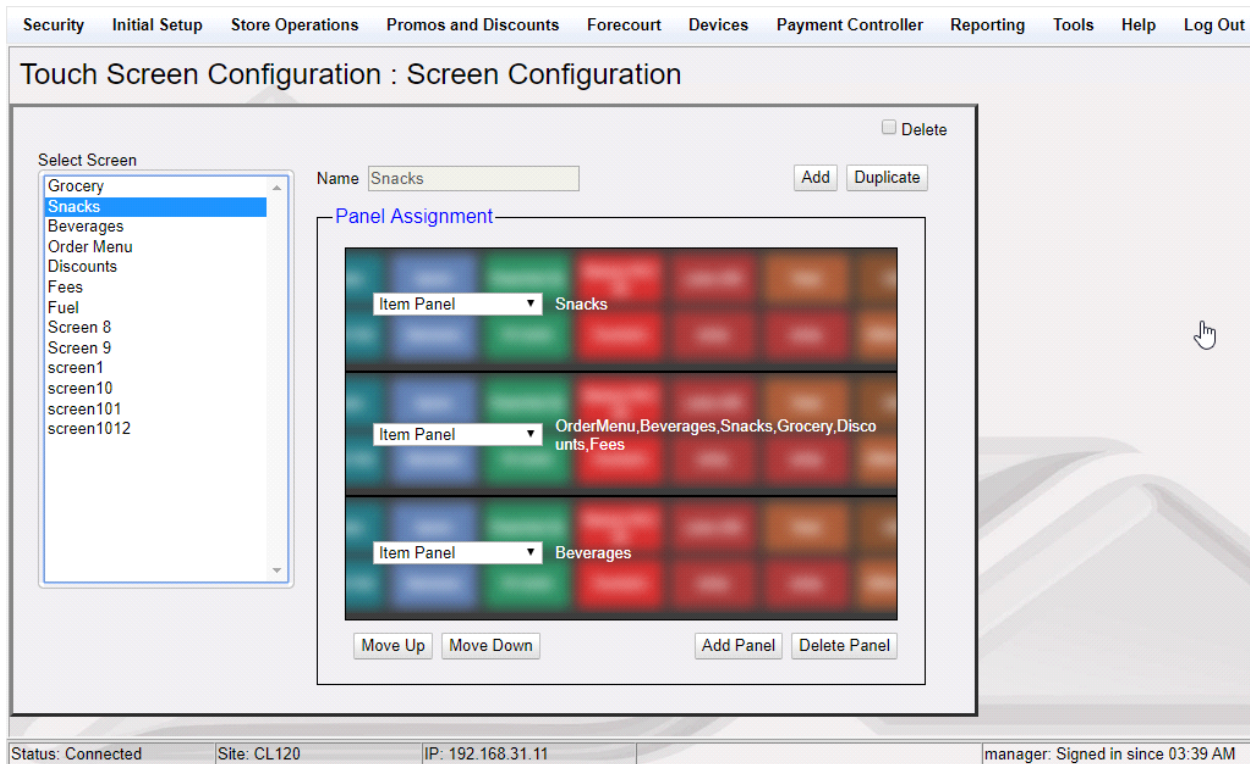
After the panels are created, create screens and assign panels to screens.

- There can be a maximum of three panels on a screen.
- A screen can have multiple item panels.
- A screen can have only one fuel and parked menu panels.
- A register can only have one fuel and parked menu panels.
- These fuel and parked menu panels can be included in multiple screens on the register.

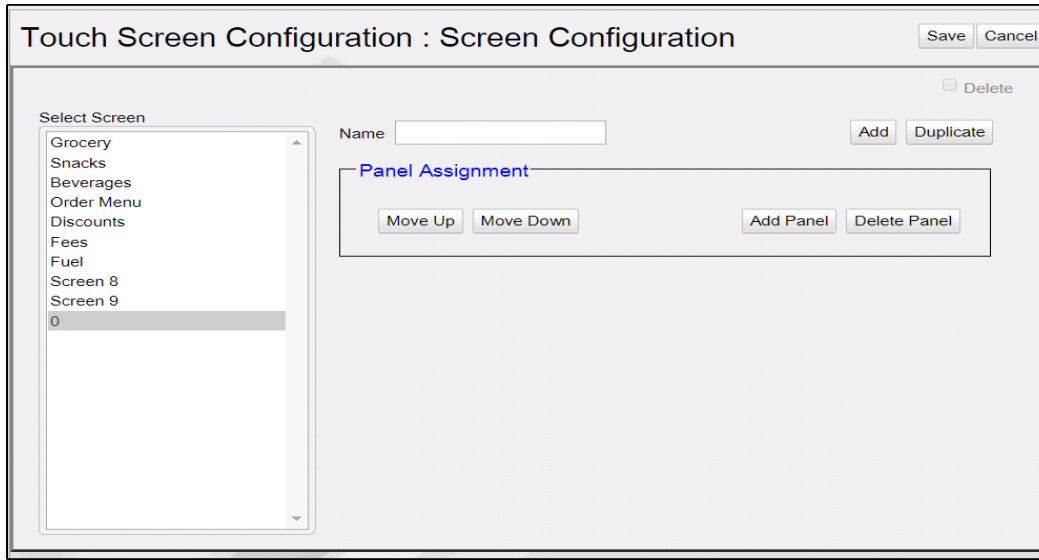
POS screen configured with a Fuel, Item and Parked Menu panels.



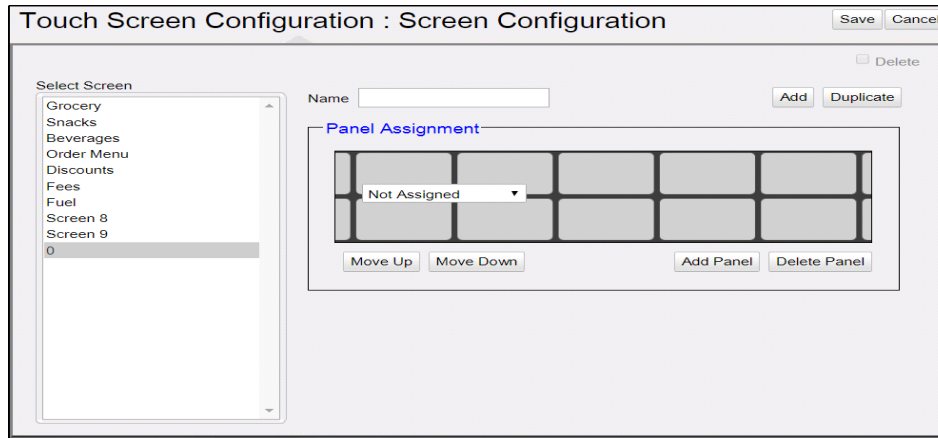
POS Screen configured with three Item panels.



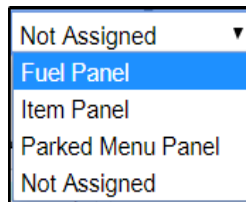
1. To create a new screen, click **Add**.



2. Enter a name for the screen.
3. Click **Add Panel**.

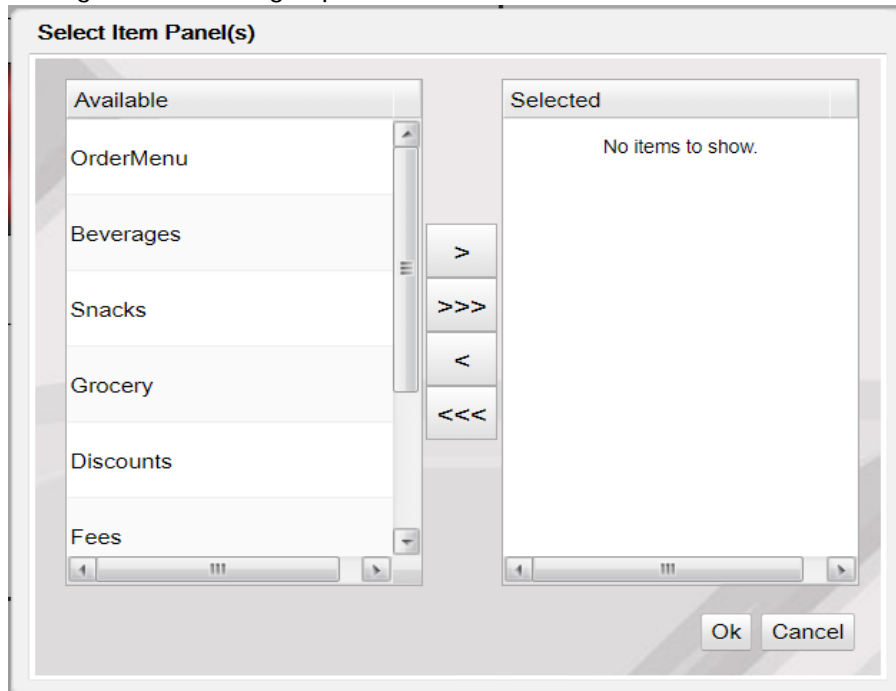


4. Select the panel to assign to the screen area.

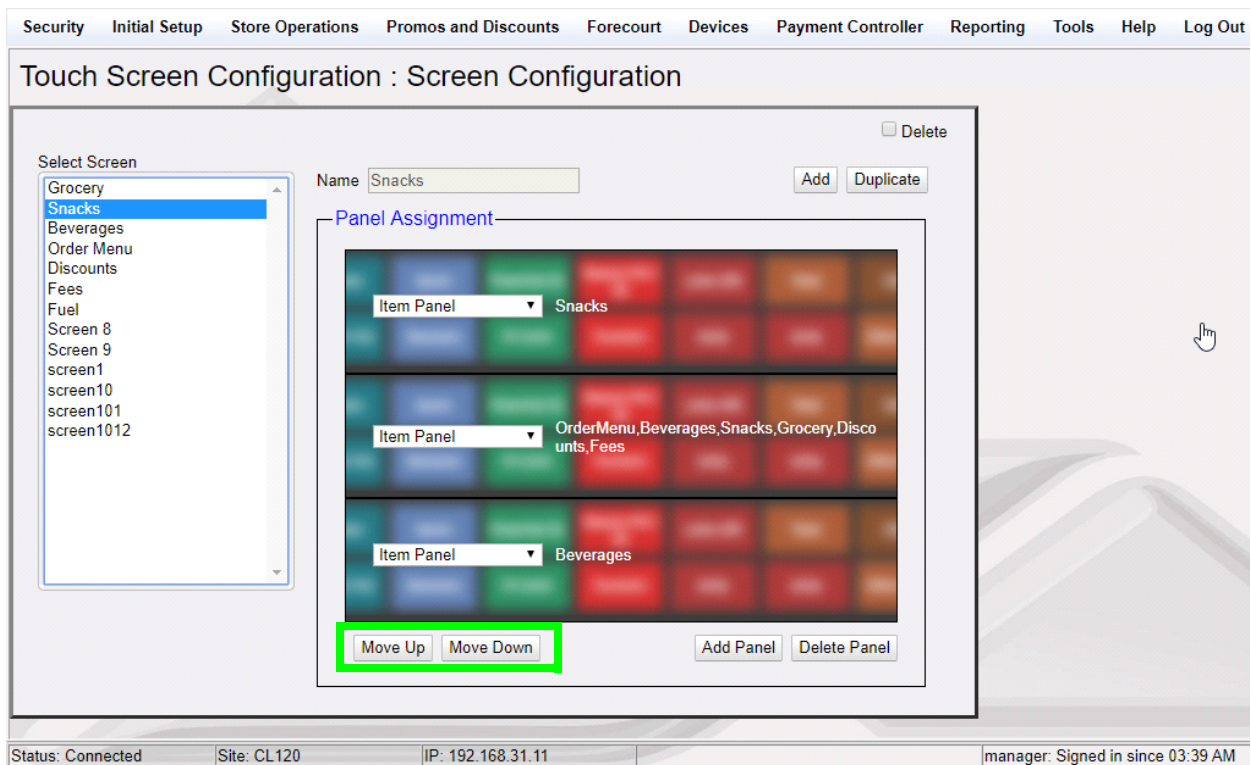


Only one type of Fuel Panel and Parked Menu Panel is allowed per register and the assignment of Fuel Panel and Parked Menu Panel to the Register is done on the Register Configuration form.

5. Selecting Item Panel takes you to a screen to select the Item Panel from the list of Item panels. More than one item panel can be selected and those will be merged into a single panel.



6. Select a panel and click **Move Up** or **Move Down** to move the panel.



Register Configuration

Use Register Configuration form to assign screens to register.

Touch Screen Configuration : Register Configuration

Select Register

Register Names

- C18 102
- Default
- topaz 101

Copy

Panel Selection

Fuel Panel

Parked Menu Panel

Fixed Prepay Buttons

Available	Selected
Screen 8	Grocery
Screen 9	Snacks
	Beverages
	Order Menu
	Discounts
	Fees

> >>> < <<<

1. Select **Register**.
2. In Panel Selection section, select the Fuel panel and Parked Menu Panel.
3. From the **Available** section, add the screens you want on the register to the **Selected** section.