

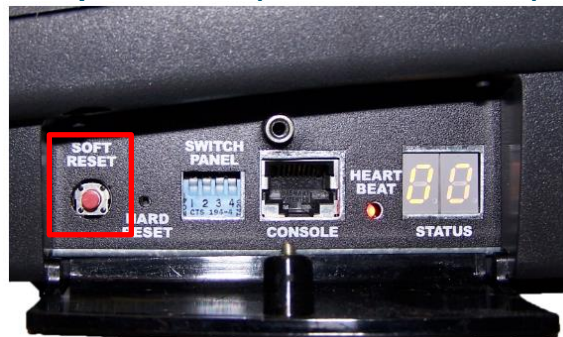
How to Identify a Topaz XL 310 vs 410?



When trying to identify the model type of a Topaz XL, please reference the 3 areas listed below. The areas highlighted in red, draw attention to the key differences between the Topaz XL 310 and 410.

DIAGNOSTIC PANEL

Topaz XL 310 (Red Reset Button)



Topaz XL 410 (Black Reset Button)

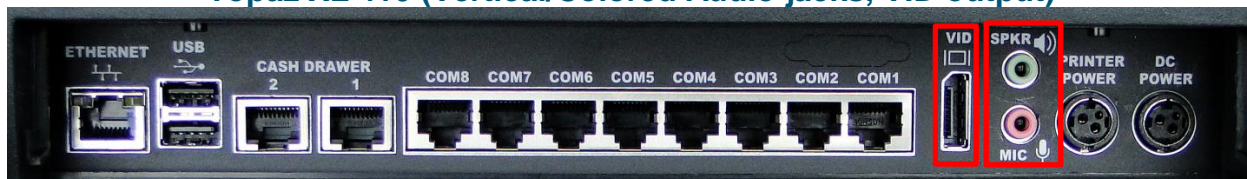


BACK PANEL

Topaz XL 310 (Horizontal/Metal Audio jacks)



Topaz XL 410 (Vertical/Colored Audio jacks, VID output)



How to Identify a Topaz XL 310 vs 410?



LABEL ON THE BOTTOM OF THE TOPAZ

Topaz XL 310



Topaz XL 410

