

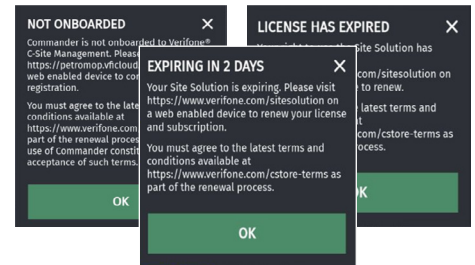
# Verifone Commander Release 55.01.00 Highlights

We're thrilled to announce exciting updates to the latest Commander software that enhance convenience, streamline operations and empower your business like never before.

## Discover the notable enhancements:

### 1 Commander Site Solution Update

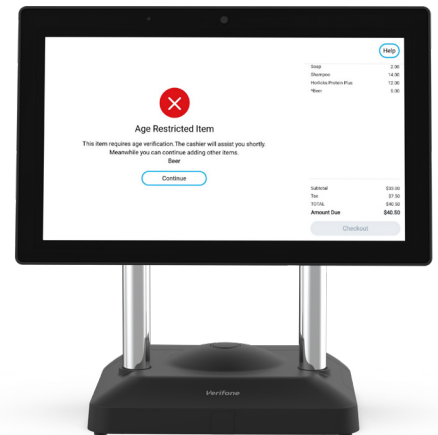
Experience uninterrupted Commander functionality even when your license expires or you're not yet onboarded to C-Site Management. Although you will continue receiving messages and alerts upon license expiry, full Commander functionality remains intact allowing you to transact normal business operations.



### 2 Optimized Age Restriction Functionality

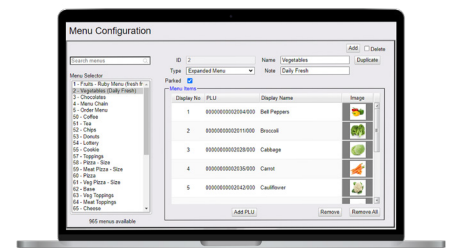
Improved customer satisfaction with age restriction enhancements for self-checkout operations. Shoppers can now continue adding items to their transaction after scanning age-restricted items, eliminating the need to wait immediately for assistance. Although store approval is still necessary before completing the purchase, this change significantly optimizes the overall self-checkout flow.

Moreover, purchasing age-restricted items with varying validation requirements can now be completed in a single purchase, both at the self-checkout and POS. Orders no longer need to be completed with one restriction type before purchasing a more restricted item. This improved flow simplifies and accelerates the checkout process, boosting efficiency.



### 3 Streamlined Foodservice Management

The Commander menu form has been overhauled for enhanced and intuitive menu creation. Now, all menu configurations can be completed on a single form, eliminating the need to switch between forms and memorize menu IDs. This change makes creating and viewing menu options faster and easier. The expanded menu capacity now supports up to 1,000 menus, providing greater flexibility for your store operations.



### 4 Simplified Password Recovery

No more hassle with forgotten passwords! The Challenge Questions Configuration Client ensures smooth password resets by mandating the setup of challenge questions.